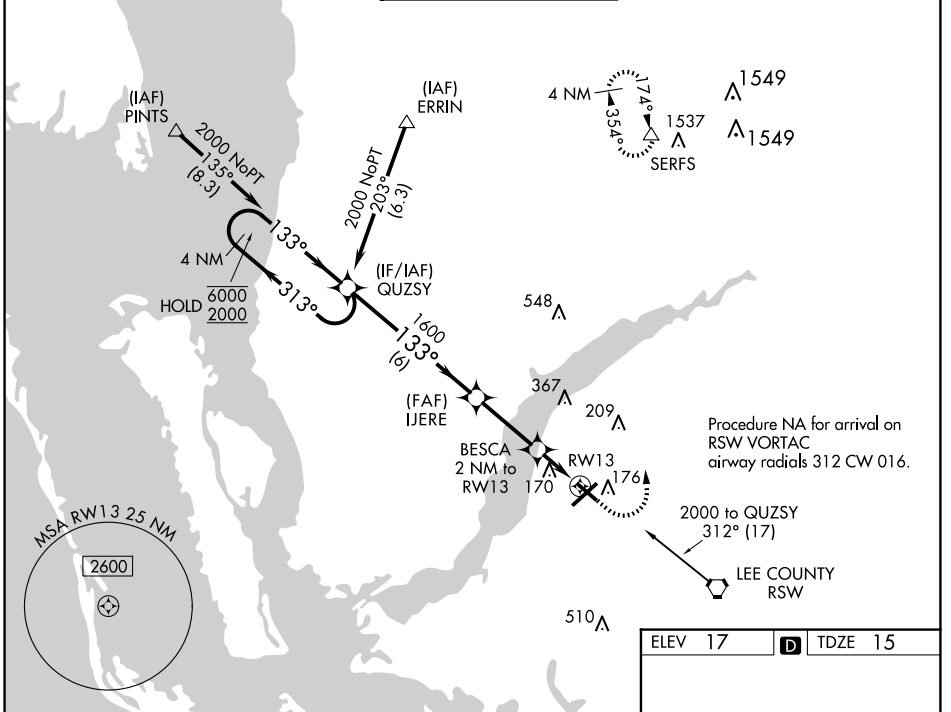


WAAS CH 73024 W13A	APP CRS 133°	Rwy Idg 4296 TDZE 15 Apt Elev 17
--	------------------------	---

RNAV (GPS) RWY 13

PAGE FLD (FMY)

RNP APCH.		MISSED APPROACH: Climb to 500 then climbing left turn to 2600 direct SERFS and hold.		
ATIS 123.725	FORT MYERS APP CON ★ 125.15 306.2 (Rwys 5, 13) 126.8 306.2 (Rwys 23, 31)	PAGE TOWER ★ 119.0 (CTAF) 306.95	GND CON 121.7	CLNC DEL 121.7

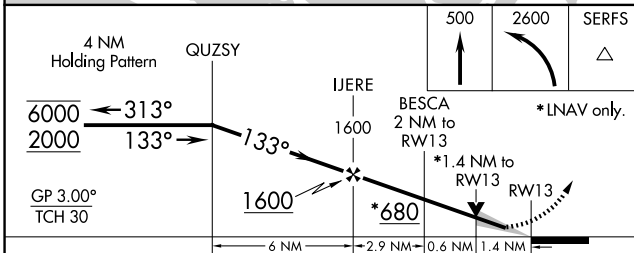


SE-3, 23 JAN 2025 to 20 FEB 2025

SE-3, 23 JAN 2025 to 20 FEB 2025

ELEV 17	TDZE 15
---------	---------

Detailed diagram of the RWY 13 approach path, showing the 4 NM holding pattern at QUZSY (6000/2000), the 1600 MSL final approach segment, and the 1.4 NM to RWY 13. Includes a runway layout diagram with TWR 100 and various runway markings.



CATEGORY	A	B	C	D
LPV DA	265-1	250 (300-1)		
LNAV/VNAV DA	480-1½	465 (500-1½)		
LNAV MDA	480-1	465 (500-1)	480-1½	465 (500-1½)
C CIRCLING	540-1	523 (600-1)	600-1½ 583 (600-1½)	680-2 663 (700-2)

REIL Rwys 5, 13, 23 and 31
MIRL Rwy 5-23 and 13-31