

WAAS CH <b>69424</b> <b>W23A</b>	APP CRS <b>231°</b>	Rwy Idg TDZE Apt Elev	<b>5545</b> <b>16</b> <b>17</b>
--	------------------------	-----------------------------	---------------------------------------

# RNAV (GPS) RWY 23

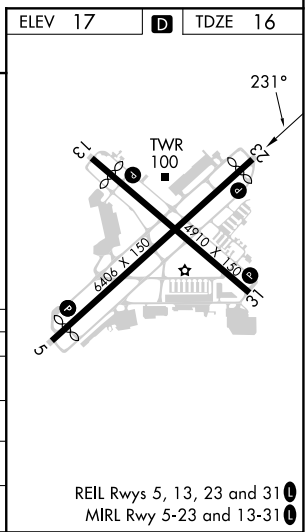
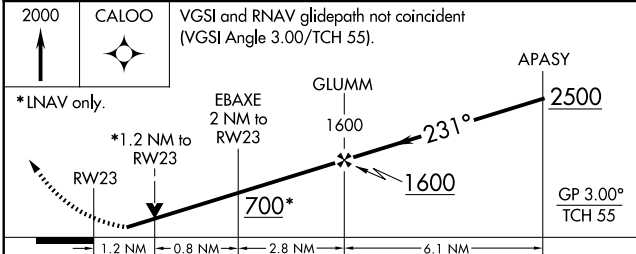
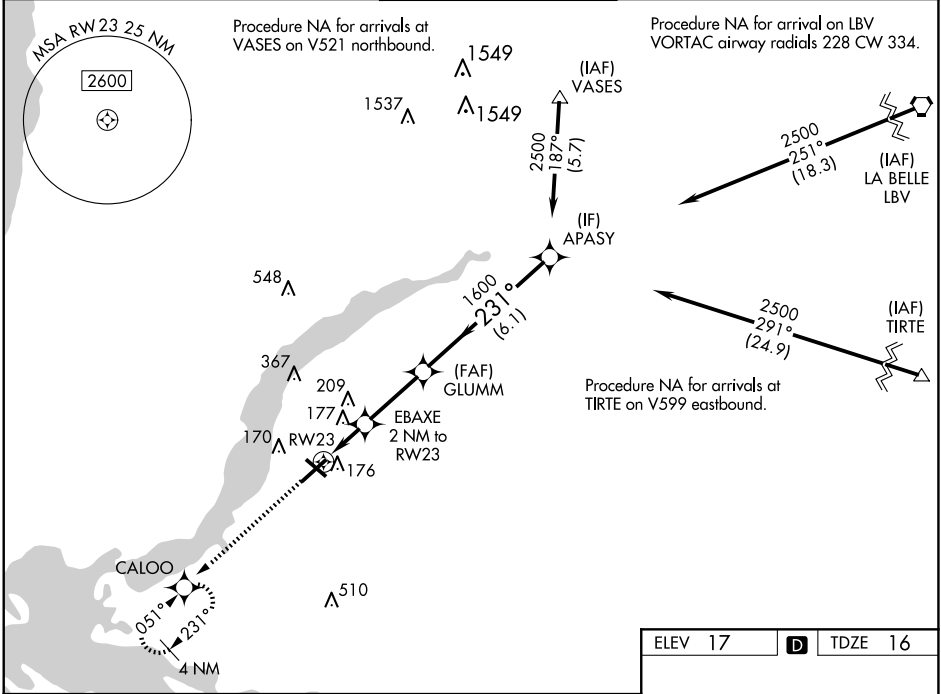
PAGE FLD (FMY)

RNP APCH.

When Circling to Rwy 31 at night, operational VGSI required, remain on or above VGSI glidepath until threshold. Rwy 23 helicopter visibility reduction below  $\frac{3}{4}$  SM NA. For uncompensated Baro-VNAV systems, LNAV/VNAV NA below 4°C or above 54°C.

MISSED APPROACH:  
Climb to 2000 direct  
CALOO and hold.

ATIS <b>123.725</b>	FORT MYERS APP CON ★ <b>125.15 306.2</b> (Rwys 5, 13) <b>126.8 306.2</b> (Rwys 23, 31)	PAGE TOWER ★ <b>119.0</b> (CTAF) <b>0 306.95</b>	GND CON <b>121.7</b>	CLNC DEL <b>121.7</b>
------------------------	--	---	-------------------------	--------------------------



CATEGORY	A	B	C	D
LPV DA	274- $\frac{3}{4}$		258 (300- $\frac{3}{4}$ )	
LNAV/VNAV DA	377-1		361 (400-1)	
LNAV MDA	440-1 424 (500-1)		440-1 $\frac{1}{4}$ 424 (500-1 $\frac{1}{4}$ )	
CIRCLING	540-1 523 (600-1)		600-1 $\frac{1}{2}$ 680-2 583 (600-1 $\frac{1}{2}$ ) 663 (700-2)	

SE-3, 23 JAN 2025 to 20 FEB 2025

SE-3, 23 JAN 2025 to 20 FEB 2025