

VORTAC RSW <b>114.15</b> Chan <b>88(Y)</b>	APP CRS <b>129°</b>	Rwy Idg <b>4296</b> TDZE <b>15</b> Apt Elev <b>17</b>
--	------------------------	---

# VOR RWY 13

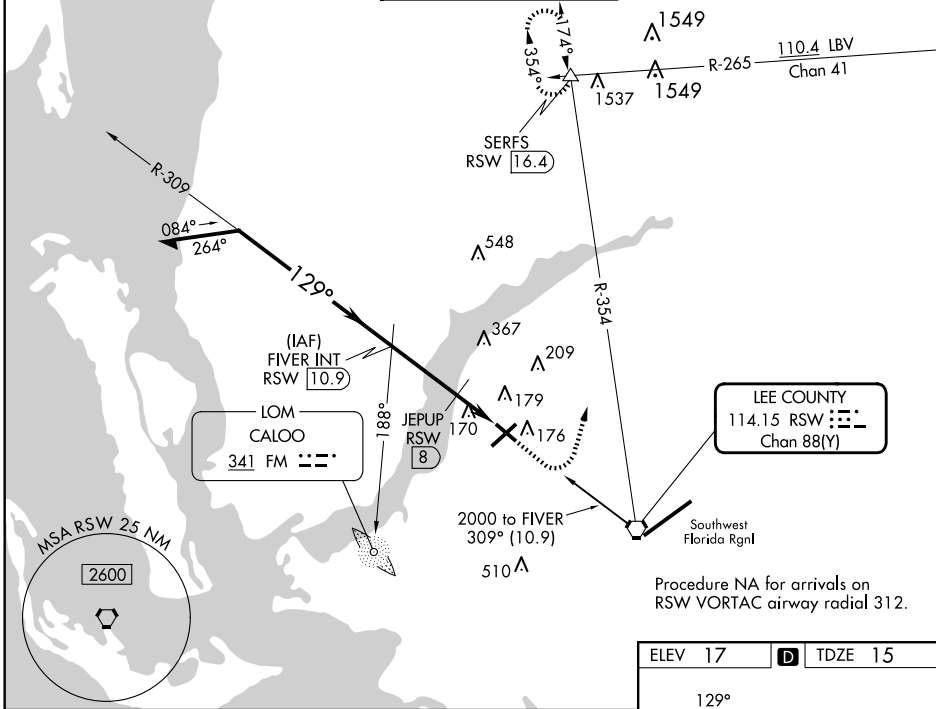
PAGE FLD (FMY)

ADF or DME required.

▼ When Circling to Rwy 31 at night, operational VGSI required, remain on or above VGSI glidepath until threshold.

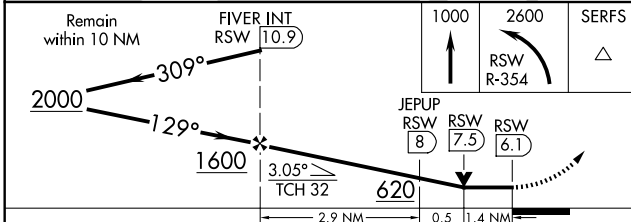
MISSED APPROACH: Climb to 1000 then climbing left turn to 2600 on RSW VORTAC R-354 to SERFS INT/RSW 16.4 DME and hold.

ATIS <b>123.725</b>	FORT MYERS APP CON ★ <b>125.15 306.2</b> (Rwys 5, 13) <b>126.8 306.2</b> (Rwys 23, 31)	PAGE TOWER ★ <b>119.0</b> (CTAF) <b>306.95</b>	GND CON <b>121.7</b>	CLNC DEL <b>121.7</b>
------------------------	--	---	-------------------------	--------------------------

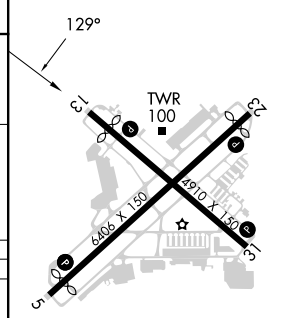


SE-3, 23 JAN 2025 to 20 FEB 2025

SE-3, 23 JAN 2025 to 20 FEB 2025



ELEV 17	TDZE 15
---------	---------



CATEGORY	A	B	C	D
S-13	620-1	605 (700-1)	620-1 <sup>3</sup> / <sub>4</sub>	605 (700-1 <sup>3</sup> / <sub>4</sub> )
<b>C</b> CIRCLING	620-1	603 (700-1)	620-1 <sup>3</sup> / <sub>4</sub> 603 (700-1 <sup>3</sup> / <sub>4</sub> )	680-2 663 (700-2)
JEPUP FIX MINIMUMS				
S-13	480-1	465 (500-1)	480-1 <sup>3</sup> / <sub>8</sub>	465 (500-1 <sup>3</sup> / <sub>8</sub> )
<b>C</b> CIRCLING	540-1	523 (600-1)	600-1 <sup>1</sup> / <sub>2</sub> 583 (600-1 <sup>1</sup> / <sub>2</sub> )	680-2 663 (700-2)

REIL Rwys 5, 13, 23 and 31					
MIRL Rwy 5-23 and 13-31					
FAF to MAP 4.8 NM					
Knots	60	90	120	150	180
Min:Sec	4:48	3:12	2:24	1:55	1:36