

WAAS CH <b>77638</b> <b>W31A</b>	APP CRS <b>313°</b>	Rwy Idg <b>2821</b> TDZE <b>836</b> Apt Elev <b>836</b>
--	------------------------	---

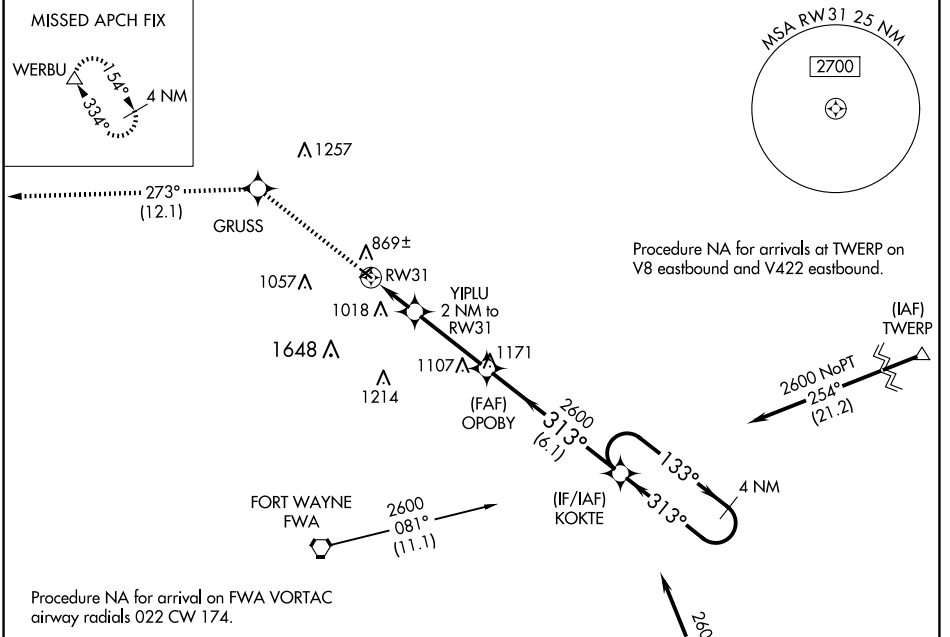
# RNAV (GPS) RWY 31

SMITH FLD (SMD)

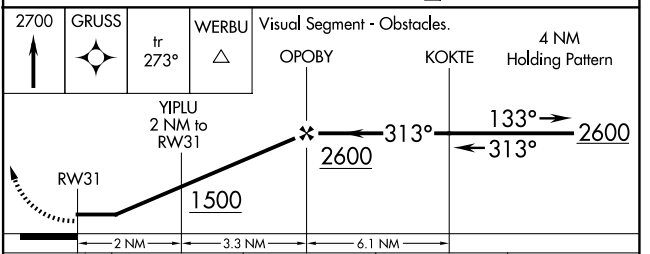
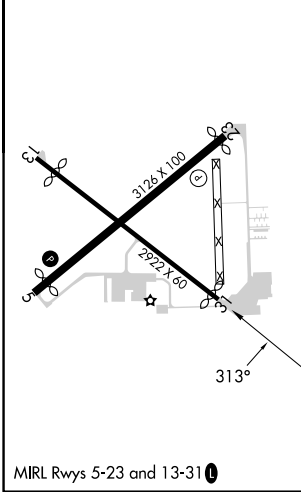
**▽** Rwy 31 helicopter visibility reduction below 1 SM NA. DME/DME RNP-0.3 NA.  
**▲** NA Procedure NA at night. When local altimeter setting not received, use Fort Wayne Intl altimeter setting and increase all MDA 40 feet, LP Cat C visibility 1/2 SM and LNAV Cat C visibility 1/2 SM.  
**⚡** -22°C

MISSED APPROACH: Climb to 2700 direct GRUSS and on track 273° to WERBU and hold.

AWOS-3 <b>124.55</b>	FORT WAYNE APP CON <b>127.2 284.6</b>	UNICOM <b>122.8 (CTAF) 0</b>
-------------------------	--	---------------------------------



ELEV 836	TDZE 836
----------	----------



CATEGORY	A	B	C	D
LP MDA	1240-1	404 (500-1)	1240-1 1/8 404 (500-1 1/8)	NA
LNAV MDA	1260-1	424 (500-1)	1260-1 1/4 424 (500-1 1/4)	NA
<b>C</b> CIRCLING	1400-1	564 (600-1)	1940-3 1104 (1200-3)	NA

EC-2, 23 JAN 2025 to 20 FEB 2025

EC-2, 23 JAN 2025 to 20 FEB 2025