

GARLAND FIVE DEPARTURE  
(GARL5.TT) 25JAN24

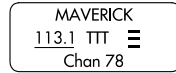
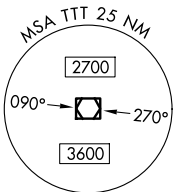
FORT WORTH MEACHAM INTL (FTW)  
FORT WORTH, TEXAS

LONE STAR DEP CON  
118.1 306.95 (North)  
135.975 379.9 (South)  
ATIS  
120.7  
CLNC DEL  
124.65  
GND CON  
121.9  
MEACHAM TOWER  
118.3 257.8

**TOP ALTITUDE:  
ASSIGNED BY ATC**

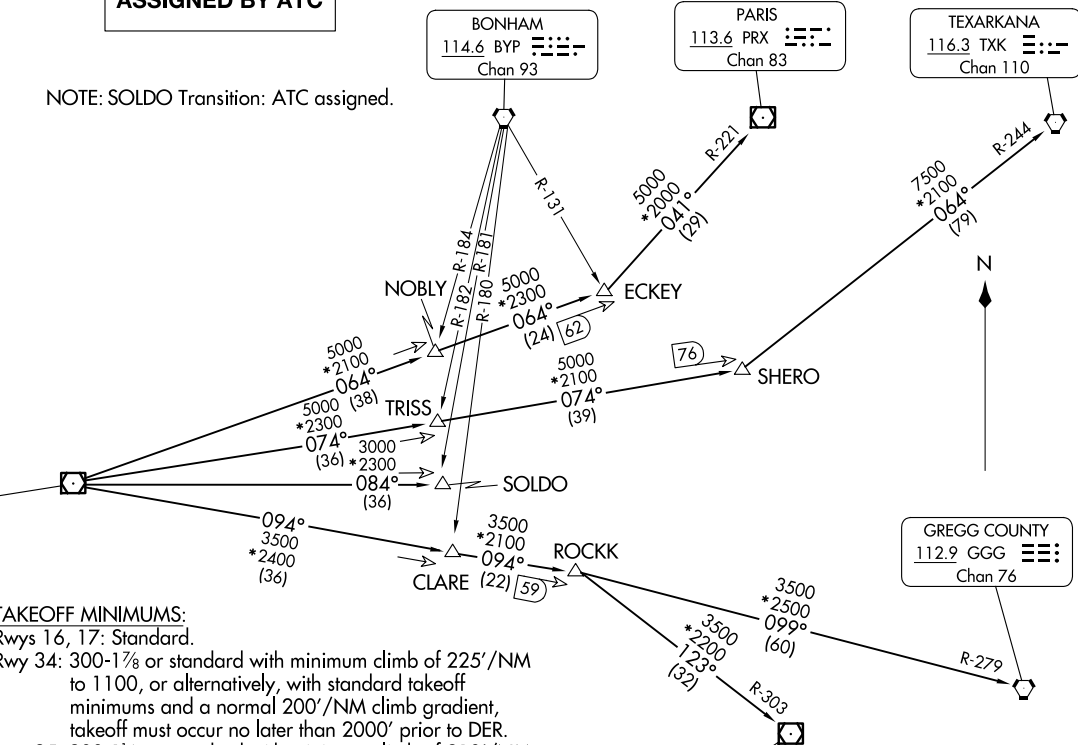
**RADAR and DME required.**

NOTE: SOLDO Transition: ATC assigned.



**TAKEOFF MINIMUMS:**  
Rwys 16, 17: Standard.  
Rwy 34: 300-1 $\frac{1}{8}$  or standard with minimum climb of 225'/NM to 1100, or alternatively, with standard takeoff minimums and a normal 200'/NM climb gradient, takeoff must occur no later than 2000' prior to DER.  
Rwy 35: 300-1 $\frac{1}{4}$  or standard with minimum climb of 210'/NM to 900, or alternatively, with standard takeoff minimums and a normal 200'/NM climb gradient, takeoff must occur no later than 1300' prior to DER.

NOTE: Chart not to scale.



(CONTINUED ON FOLLOWING PAGE)

(GARL5.TT) 24305  
GARLAND FIVE DEPARTURE

AL-159 (FAA)

FORT WORTH MEACHAM INTL (FTW)  
FORT WORTH, TEXAS

# GARLAND FIVE DEPARTURE



## DEPARTURE ROUTE DESCRIPTION

TAKEOFF RUNWAY 16: Climb on heading 166° to 1600 before proceeding on course.

TAKEOFF RUNWAY 17: Climb on heading 164° to 1600 before proceeding on course.

When entering controlled airspace, fly assigned heading for RADAR vectors to appropriate route. Maintain ATC assigned altitude.

GREGG COUNTY TRANSITION (GARL5.GGG): From over TTT VOR/DME on TTT R-094 to ROCKK, then on GGG R-279 to GGG VORTAC.

PARIS TRANSITION (GARL5.PRX): From over TTT VOR/DME on TTT R-064 to ECKEY, then on PRX R-221 to PRX VOR/DME.

SOLDO TRANSITION (GARL5.SOLDO): From over TTT VOR/DME on TTT R-084 to SOLDO.

TEXARKANA TRANSITION (GARL5.TXK): From over TTT VOR/DME on TTT R-074 to SHERO, then on TXK R-244 to TXK VORTAC.

TYLER TRANSITION (GARL5.TYR): From over TTT VOR/DME on TTT R-094 to ROCKK, then on TYR R-303 to TYR VOR/DME.

SC-2, 23 JAN 2025 to 20 FEB 2025

SC-2, 23 JAN 2025 to 20 FEB 2025