

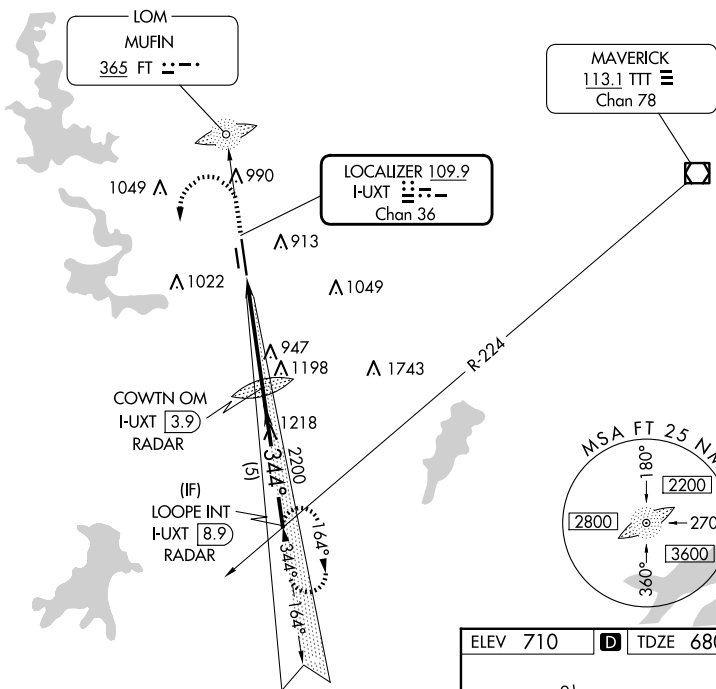
LOC I-UXT 109.9 Chan 36	APP CRS 344°	Rwy Idg 7455 TDZE 680 Apt Elev 710
---	------------------------	---

ILS or LOC RWY 34

FORT WORTH MEACHAM INTL (FTW)

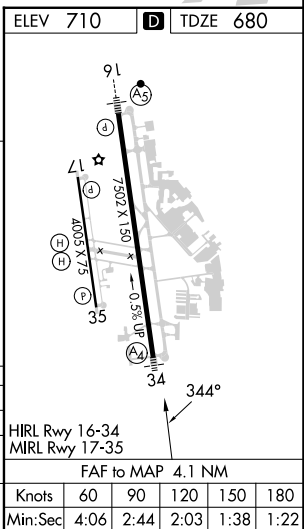
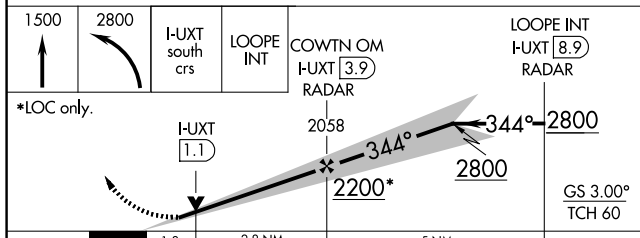
Inoperative table does not apply to S-LOC 34 Cat C.	MALS 	MISSED APPROACH : Climb to 1500, then climbing left turn to 2800 via I-UXT south course to LOOPE Int/ I-UXT 8.9 DME and hold.

ATIS 120.7	LONE STAR APP CON (North) 118.1 306.95 (South) 135.975 379.9	MEACHAM TOWER 118.3 257.8	GND CON 121.9	CLNC DEL 124.65
----------------------	--	-------------------------------------	-------------------------	---------------------------



RADAR REQUIRED

▲ 1772



CATEGORY	A	B	C	D
S- ILS 34	880-3/4		200 (200-3/4)	
S-LOC 34	1200-3/4	520 (500-3/4)	1200-1 1/2 520 (500-1 1/2)	1200-1 3/4 520 (500-1 3/4)
C CIRCLING	1260-1 550 (600-1)	1280-1 570 (600-1)	1340-1 3/4 630 (700-1 3/4)	1500-2 1/2 790 (800-2 1/2)