

KINGDOM FOUR DEPARTURE
(KING4.TTT) 25JAN24

FORT WORTH, TEXAS
FORT WORTH MEACHAM INTL (F'W)

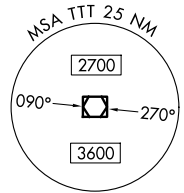
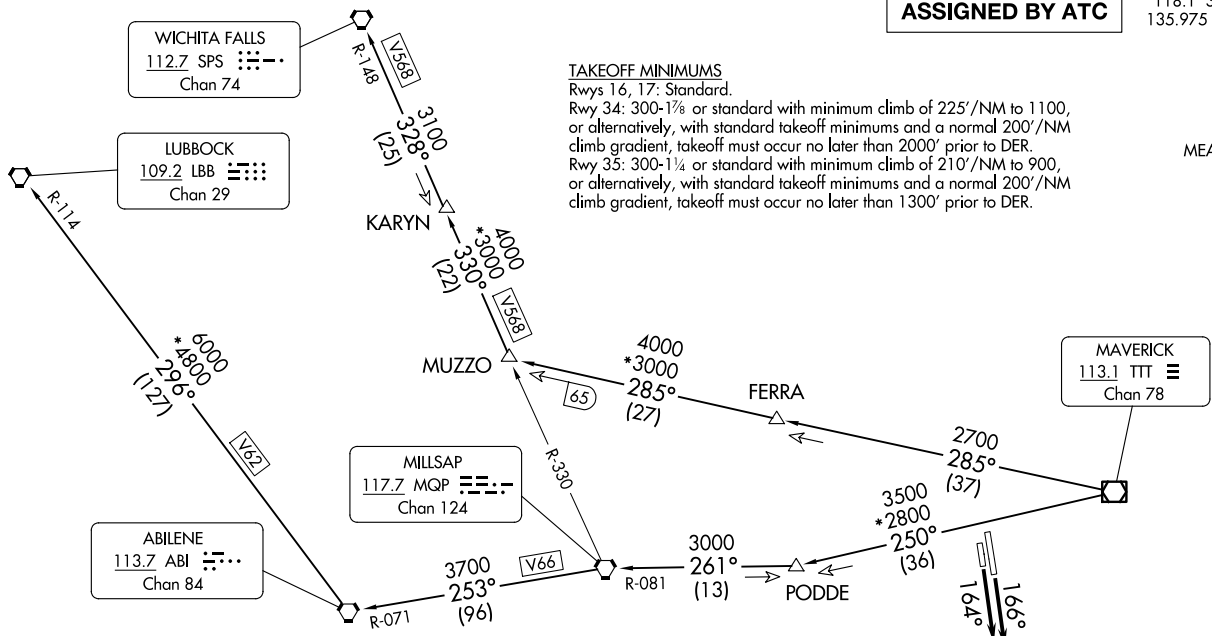
RADAR and DME required.

**TOP ALTITUDE:
ASSIGNED BY ATC**

LONE STAR DEP CON
118.1 306.95 (NORTH)
135.975 379.9 (SOUTH)
ATIS
120.7
CLNC DEL
124.65
GND CON
121.9
MEACHAM TOWER
118.3 257.8

TAKEOFF MINIMUMS

Rwys 16, 17: Standard.
Rwy 34: 300-1 $\frac{1}{4}$ or standard with minimum climb of 225'/NM to 1100, or alternatively, with standard takeoff minimums and a normal 200'/NM climb gradient, takeoff must occur no later than 2000' prior to DER.
Rwy 35: 300-1 $\frac{1}{4}$ or standard with minimum climb of 210'/NM to 900, or alternatively, with standard takeoff minimums and a normal 200'/NM climb gradient, takeoff must occur no later than 1300' prior to DER.



- NOTE: LUBBOCK Transition: For all aircraft overflying the MQP VORTAC westbound or direct.
- NOTE: MILLSAP Transition: For all aircraft overflying the MQP VORTAC westbound or direct.
- NOTE: PODDE Transition: ATC assigned.
- NOTE: WICHITA FALLS Transition: For all aircraft landing within the Wichita Falls terminal area or overflying the SPS VORTAC.
- NOTE: For all aircraft requesting 17000 and below.

NOTE: Chart not to scale.

(CONTINUED ON FOLLOWING PAGE)

(KING4.TTT) 24305
KINGDOM FOUR DEPARTURE

AL-159 (FAA)
FORT WORTH MEACHAM INTL (F'W)
FORT WORTH, TEXAS

KINGDOM FOUR DEPARTURE



DEPARTURE ROUTE DESCRIPTION

TAKEOFF RUNWAY 16: Climb on heading 166° to 1600 before proceeding on course.

TAKEOFF RUNWAY 17: Climb on heading 164° to 1600 before proceeding on course.

When entering controlled airspace, fly assigned heading for RADAR vectors to appropriate route. Maintain ATC assigned altitude.

LUBBOCK TRANSITION (KING4.LBB): From over TTT VOR/DME on TTT R-250 to PODDE, then on MQP R-081 to MQP VORTAC, then on MQP R-253 and ABI R-071 to ABI VORTAC, then on ABI R-296 and LBB R-114 to LBB VORTAC.

MILLSAP TRANSITION (KING4.MQP): From over TTT VOR/DME on TTT R-250 to PODDE, then on MQP R-081 to MQP VORTAC.

PODDE TRANSITION (KING4.PODDE): From over TTT VOR/DME on TTT R-250 to PODDE.

WICHITA FALLS TRANSITION (KING4.SPS): From over TTT VOR/DME on TTT R-285 to MUZZO, then on MQP R-330 and SPS R-148 to KARYN, then on SPS R-148 to SPS VORTAC.

SC-2, 23 JAN 2025 to 20 FEB 2025

SC-2, 23 JAN 2025 to 20 FEB 2025