

# TEXOMA FIVE DEPARTURE

LONE STAR DEP CON  
 118.1 306.95 (NORTH)  
 135.975 379.9 (SOUTH)  
 ATIS  
 120.7  
 CLNC DEL  
 124.65  
 GND CON  
 121.9  
 MEACHAM TOWER  
 118.3 257.8

**TOP ALTITUDE:  
 ASSIGNED BY ATC**

TULSA  
 114.4 TUL  
 Chan 91

RADAR and DME required.

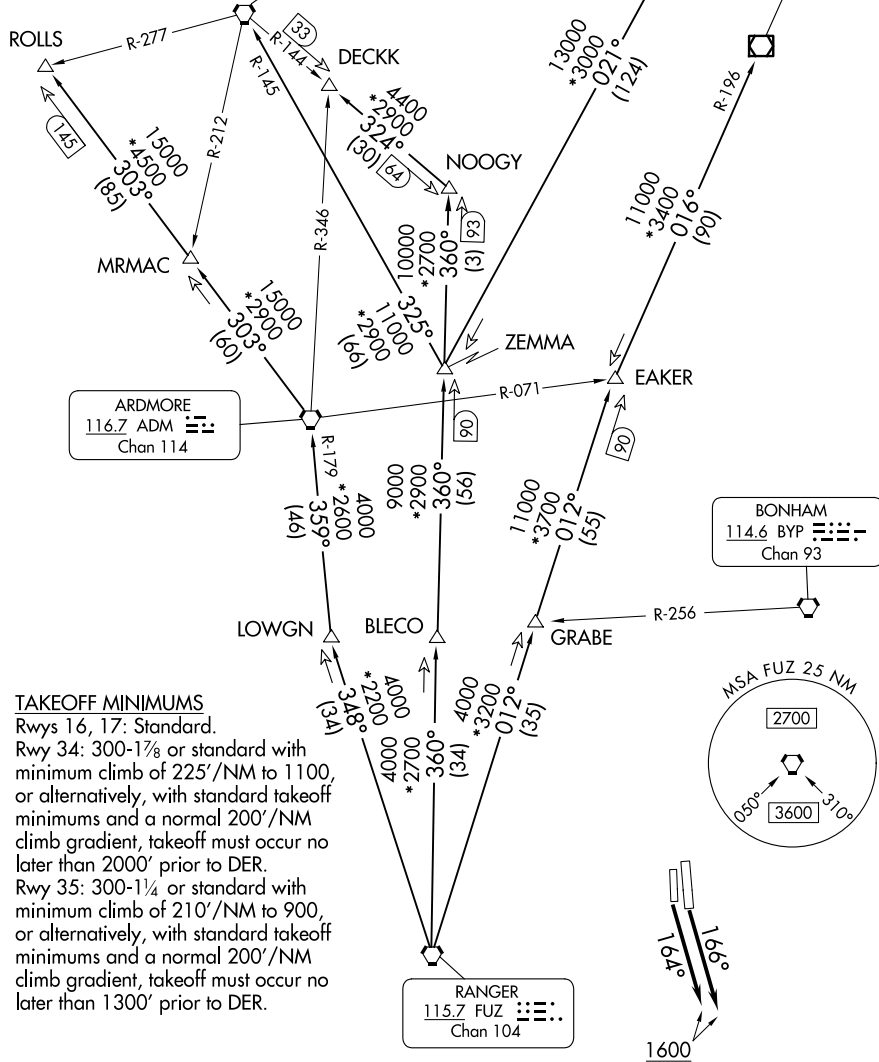
WILL ROGERS  
 114.1 IRW  
 Chan 88

OKMULGEE  
 114.9 OKM  
 Chan 96

ARDMORE  
 116.7 ADM  
 Chan 114

BONHAM  
 114.6 BYP  
 Chan 93

RANGER  
 115.7 FUZ  
 Chan 104



### TAKEOFF MINIMUMS

Rwys 16, 17: Standard.

Rwy 34: 300-1 $\frac{1}{4}$  or standard with minimum climb of 225'/NM to 1100, or alternatively, with standard takeoff minimums and a normal 200'/NM climb gradient, takeoff must occur no later than 2000' prior to DER.

Rwy 35: 300-1 $\frac{1}{4}$  or standard with minimum climb of 210'/NM to 900, or alternatively, with standard takeoff minimums and a normal 200'/NM climb gradient, takeoff must occur no later than 1300' prior to DER.

(CONTINUED ON FOLLOWING PAGE)

NOTE: Chart not to scale.

# TEXOMA FIVE DEPARTURE

SC-2, 23 JAN 2025 to 20 FEB 2025

SC-2, 23 JAN 2025 to 20 FEB 2025

# TEXOMA FIVE DEPARTURE



## DEPARTURE ROUTE DESCRIPTION

TAKEOFF RUNWAY 16: Climb on heading 166° to 1600 before proceeding on course.

TAKEOFF RUNWAY 17: Climb on heading 164° to 1600 before proceeding on course.

When entering controlled airspace, fly assigned heading for RADAR vectors to appropriate route. Maintain ATC assigned altitude.

ARDMORE TRANSITION (TEX5.ADM): From over FUZ VORTAC on FUZ R-348 to LOWGN, then on ADM R-179 to ADM VORTAC.

BLECO TRANSITION (TEX5.BLECO): From over FUZ VORTAC on FUZ R-360 to BLECO.

DECKK TRANSITION (TEX5.DECKK): From over FUZ VORTAC on FUZ R-360 to NOOGY, then on IRW R-144 to DECKK.

EAKER TRANSITION (TEX5.EAKER): From over FUZ VORTAC on FUZ R-012 to EAKER.

GRABE TRANSITION (TEX5.GRABE): From over FUZ VORTAC on FUZ R-012 to GRABE.

OKMULGEE TRANSITION (TEX5.OKM): From over FUZ VORTAC on FUZ R-012 to EAKER, then on OKM R-196 to OKM VOR/DME.

ROLLS TRANSITION (TEX5.ROLLS): From over FUZ VORTAC on FUZ R-348 to LOWGN, then on ADM R-179 to ADM VORTAC, then on ADM R-303 to ROLLS.

TULSA TRANSITION (TEX5.TUL): From over FUZ VORTAC on FUZ R-360 to ZEMMA, then on TUL R-201 to TUL VORTAC.

WILL ROGERS TRANSITION (TEX5.IRW): From over FUZ VORTAC on FUZ R-360 to ZEMMA, then on IRW R-145 to IRW VORTAC.

ZEMMA TRANSITION (TEX5.ZEMMA): From over FUZ VORTAC on FUZ R-360 to ZEMMA.

NOTE: BLECO Transition: ATC assigned.

NOTE: DECKK Transition: For all aircraft inbound to the Oklahoma City area.

NOTE: EAKER Transition: For aircraft inbound to the Tulsa terminal area.

NOTE: GRABE Transition: ATC assigned.

NOTE: OKMULGEE Transition: For all aircraft overflying OKM VOR/DME proceeding on J181 to BDF to destinations in the Chicago terminal area and north.

NOTE: TULSA Transition: For all aircraft overflying TUL VORTAC.

NOTE: WILL ROGERS Transition: For all aircraft overflying IRW VORTAC.

SC-2, 23 JAN 2025 to 20 FEB 2025

SC-2, 23 JAN 2025 to 20 FEB 2025