

RADAR and DME required.

**TOP ALTITUDE:  
ASSIGNED BY ATC**

LONE STAR DEP CON  
125.8 257.95  
ATIS ★  
351.675  
CLNC DEL  
126.4 254.325  
GND CON  
121.675 279.575  
NAVY FORT WORTH TOWER ★  
120.95 269.325

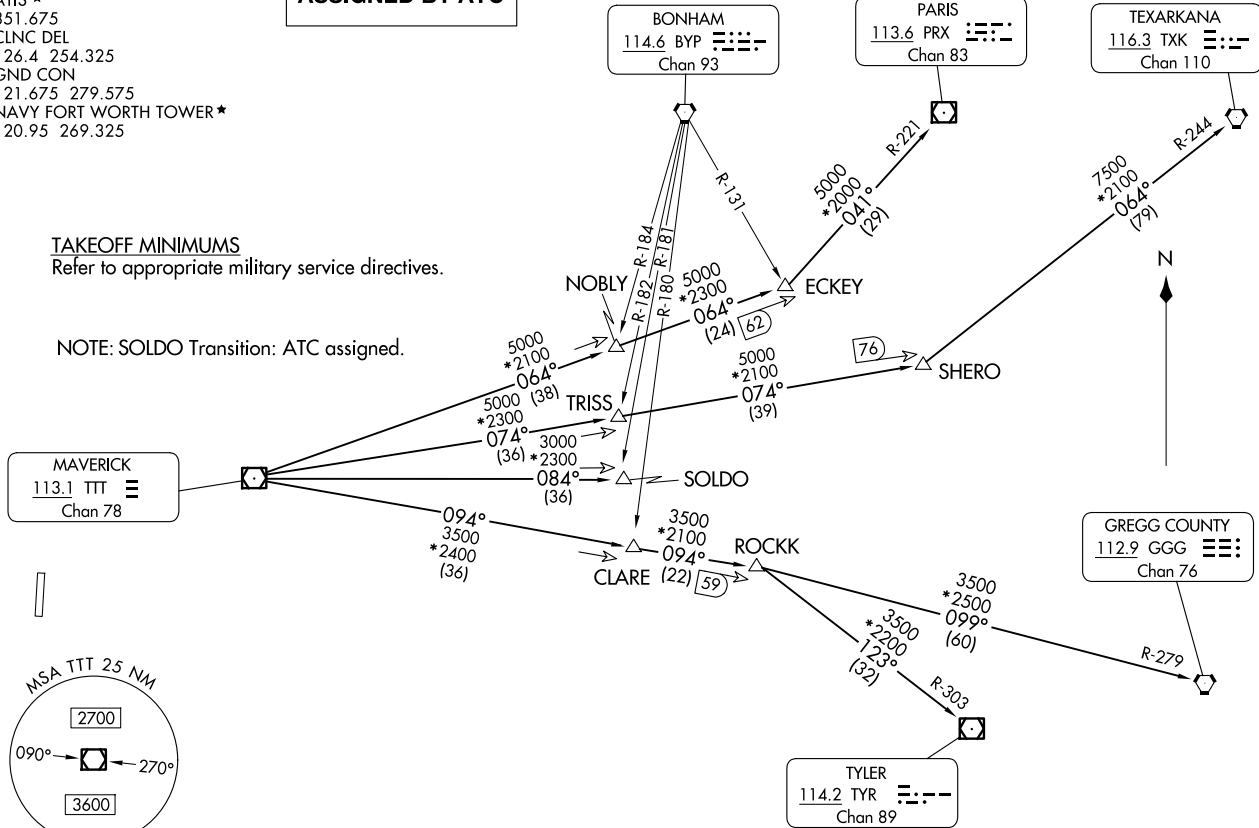
GARLAND FIVE DEPARTURE  
(GARLS.TTT) 251ANZ4

FORT WORTH NAS JRB (CARSWELL FLD) (NFW) 251ANZ4

(GARLS.TTT) 24305  
GARLAND FIVE DEPARTURE

AL-160 (FAA)

FORT WORTH NAS JRB (CARSWELL FLD) (NFW)  
FORT WORTH, TEXAS



**TAKEOFF MINIMUMS**  
Refer to appropriate military service directives.

NOTE: SOLDO Transition: ATC assigned.

MAVERICK  
113.1 TTT  
Chan 78

BONHAM  
114.6 BYP  
Chan 93

PARIS  
113.6 PRX  
Chan 83

TEXARKANA  
116.3 TXK  
Chan 110

NOBLY  
5000 \*2100  
064° (38)  
5000 \*2300  
074° (36)  
3000 \*2300  
084° (36)

ECKEY  
5000 \*2100  
064° (29)  
5000 \*2100  
074° (39)

SHERO  
76

TRISS  
5000 \*2100  
064° (38)  
5000 \*2300  
074° (36)  
3000 \*2300  
084° (36)

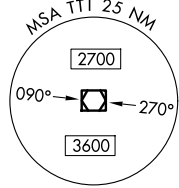
SOLDO  
36

CLARE (22)  
3500 \*2100  
094° (36)  
3500 \*2500  
099° (60)

ROCKK  
3500 \*2200  
173° (32)  
R-303

GREGG COUNTY  
112.9 GGG  
Chan 76

TYLER  
114.2 TYR  
Chan 89



NOTE: Chart not to scale.

(CONTINUED ON FOLLOWING PAGE)



DEPARTURE ROUTE DESCRIPTION

When entering controlled airspace, fly assigned heading for RADAR vectors to appropriate route. Maintain ATC assigned altitude.

GREGG COUNTY TRANSITION (GARL5.GGG): From over TTT VOR/DME on TTT R-094 to ROCKK, then on GGG R-279 to GGG VORTAC.

PARIS TRANSITION (GARL5.PRX): From over TTT VOR/DME on TTT R-064 to ECKEY, then on PRX R-221 to PRX VOR/DME.

SOLDO TRANSITION (GARL5.SOLDO): From over TTT VOR/DME on TTT R-084 to SOLDO.

TEXARKANA TRANSITION (GARL5.TXK): From over TTT VOR/DME on TTT R-074 to SHERO, then on TXK R-244 to TXK VORTAC.

TYLER TRANSITION (GARL5.TYR): From over TTT VOR/DME on TTT R-094 to ROCKK, then on TYR R-303 to TYR VOR/DME.

SC-2, 23 JAN 2025 to 20 FEB 2025

SC-2, 23 JAN 2025 to 20 FEB 2025