

HI-TACAN Y RWY 18

TACAN NFW Chan 24	APCH CRS 172°	Rwy Ldg 11,999 TDZE 636 Arpt Elev 650
-----------------------------	-------------------------	--

[USN]

FORT WORTH NAS JRB (CARSWELL FLD) (KNFW)

FUZ VORTAC or RADAR required.

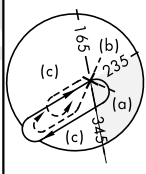
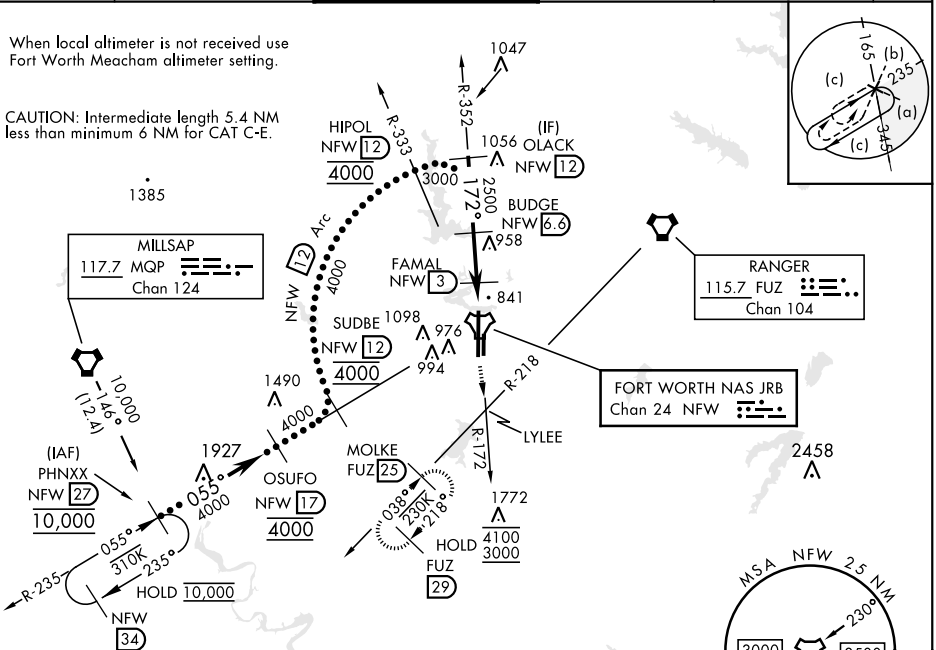
MISSED APPROACH: Climb to 3000 direct LYLEE to intercept FUZ VORTAC R-218 to MOLKE and hold.

* Circling not authorized E of Rwy 18-36.

ATIS* 351.675	LONE STAR APP CON 125.8 257.95	NAVY FORT WORTH TOWER* 120.950 269.325	GND CON 121.675 279.575	CLNC DEL 126.4 254.325	ASR/ PAR
-------------------------	--	--	-----------------------------------	----------------------------------	-------------

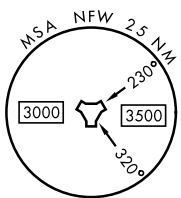
When local altimeter is not received use Fort Worth Meacham altimeter setting.

CAUTION: Intermediate length 5.4 NM less than minimum 6 NM for CAT C-E.

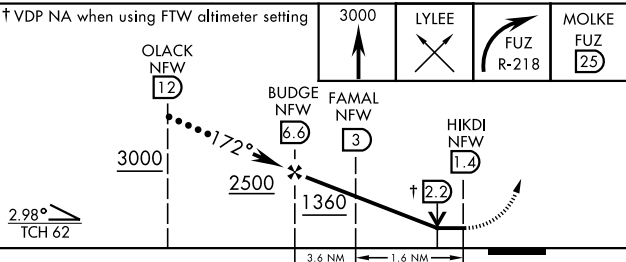


RANGER
115.7 FUZ
Chan 104

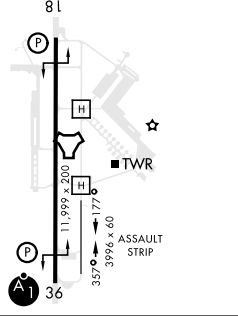
FORT WORTH NAS JRB
Chan 24 NFW



EMERG SAFE ALT 100 NM 4000



ELEV 650	TDZE 636
172°	REIL Rwy 18
81	HIRL Rwy 18-36



CATEGORY	C	D	E
S-18	1100-1 $\frac{3}{4}$ 464 (500-1 $\frac{3}{4}$)		
CIRCLING*	1320-1 $\frac{3}{4}$ 670 (700-1 $\frac{3}{4}$)	1340-2 $\frac{1}{4}$ 690 (700-2 $\frac{1}{4}$)	1440-2 $\frac{3}{4}$ 790 (800-2 $\frac{3}{4}$)
FORT WORTH MEACHAM ALTIMETER			
S-18	1120-1 $\frac{3}{4}$ 484 (500-1 $\frac{3}{4}$)		
CIRCLING*	1340-2 690 (700-1)	1360-2 $\frac{1}{4}$ 710 (700-2 $\frac{1}{4}$)	1460-2 $\frac{3}{4}$ 810 (900-2 $\frac{3}{4}$)

FORT WORTH, TEXAS 32°46'N-97°26'W FORT WORTH NAS JRB (CARSWELL FLD) (KNFW)

Orig 18MAY23

HI-TACAN Y RWY 18

SC-2, 23 JAN 2025 to 20 FEB 2025

SC-2, 23 JAN 2025 to 20 FEB 2025