

# JOE POOL SEVEN DEPARTURE

FORT WORTH NAS JRB (CARSWELL FLD) (NF<sup>W</sup>)  
FORT WORTH, TEXAS

LONE STAR DEP CON  
125.8 257.95  
ATIS ★  
351.675  
CLNC DEL  
126.4 254.325  
GND CON  
121.675 279.575  
NAVY FORT WORTH TOWER ★  
120.95 269.325

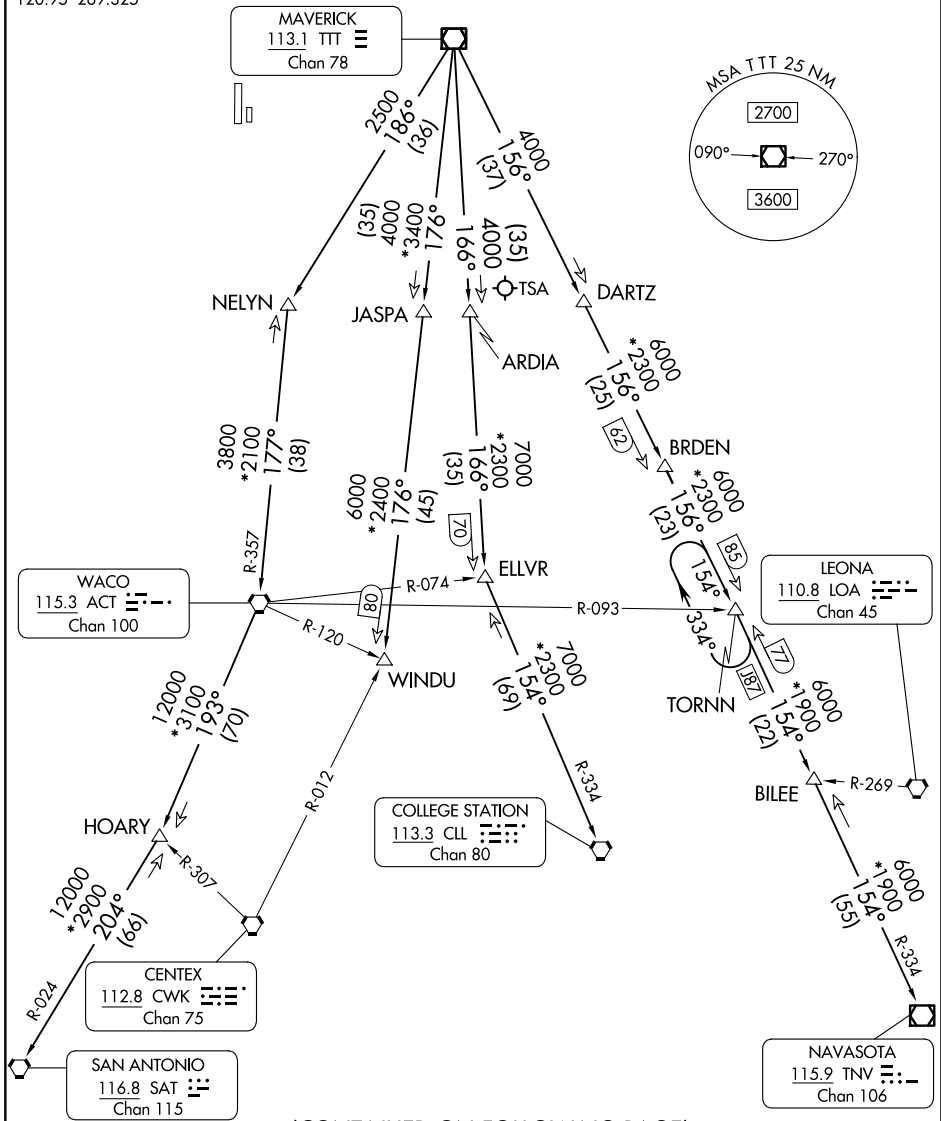
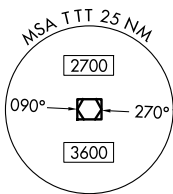
RADAR and DME required.

**TOP ALTITUDE:  
ASSIGNED BY ATC**

### TAKEOFF MINIMUMS

Refer to appropriate military service directives.

**MAVERICK**  
113.1 TTT  
Chan 78



SC-2, 23 JAN 2025 to 20 FEB 2025

SC-2, 23 JAN 2025 to 20 FEB 2025

(CONTINUED ON FOLLOWING PAGE)

NOTE: Chart not to scale.

# JOE POOL SEVEN DEPARTURE

FORT WORTH, TEXAS  
FORT WORTH NAS JRB (CARSWELL FLD) (NF<sup>W</sup>)



DEPARTURE ROUTE DESCRIPTION

When entering controlled airspace, fly assigned heading for RADAR vectors to appropriate route. Maintain ATC assigned altitude.

COLLEGE STATION TRANSITION (JPOOL7.CLL): From over TTT VOR/DME on TTT R-166 to ELLVR, then on CLL R-334 to CLL VORTAC.

ELLVR TRANSITION (JPOOL7.ELLVR): From over TTT VOR/DME on TTT R-166 to ELLVR.

HOARY TRANSITION (JPOOL7.HOARY): From over TTT VOR/DME on TTT R-186 to NELYN, then on ACT R-357 to ACT VORTAC, then on ACT R-193 to HOARY.

NAVASOTA TRANSITION (JPOOL7.TNV): From over TTT VOR/DME on TTT R-156 to TORNN, then on TNV R-334 to TNV VOR/DME.

SAN ANTONIO TRANSITION (JPOOL7.SAT): From over TTT VOR/DME on TTT R-186 to NELYN, then on ACT R-357 to ACT VORTAC, then on ACT R-193 to HOARY, then on SAT R-024 to SAT VORTAC.

TORNN TRANSITION (JPOOL7.TORNN): From over TTT VOR/DME on TTT R-156 to TORNN.

WACO TRANSITION (JPOOL7.ACT): From over TTT VOR/DME on TTT R-186 to NELYN, then on ACT R-357 to ACT VORTAC.

WINDU TRANSITION (JPOOL7.WINDU): From over TTT VOR/DME on TTT R-176 to WINDU.

NOTE: COLLEGE STATION Transition: For piston and turboprop aircraft destined to HOU, EFD, GLS, or LBX. Also for all other aircraft types destined to all other Houston terminal area airports except IAH, CXO, DWH, T78 or 6R3.

NOTE: ELLVR Transition: For turbojet aircraft destined to HOU, EFD, GLS, or LBX.

NOTE: SAN ANTONIO Transition: For aircraft overflying Centex and San Antonio.

NOTE: TORNN Transition: Only for aircraft destined IAH, CXO, DWH, T78 or 6R3.

NOTE: WACO Transition: For aircraft inbound to Waco or Gray terminal area airports.

NOTE: WINDU Transition: For aircraft inbound to Austin or San Antonio terminal area.

SC-2, 23 JAN 2025 to 20 FEB 2025

SC-2, 23 JAN 2025 to 20 FEB 2025