

FRESNO, CALIFORNIA

HI-ILS Z or LOC Z RWY 29R

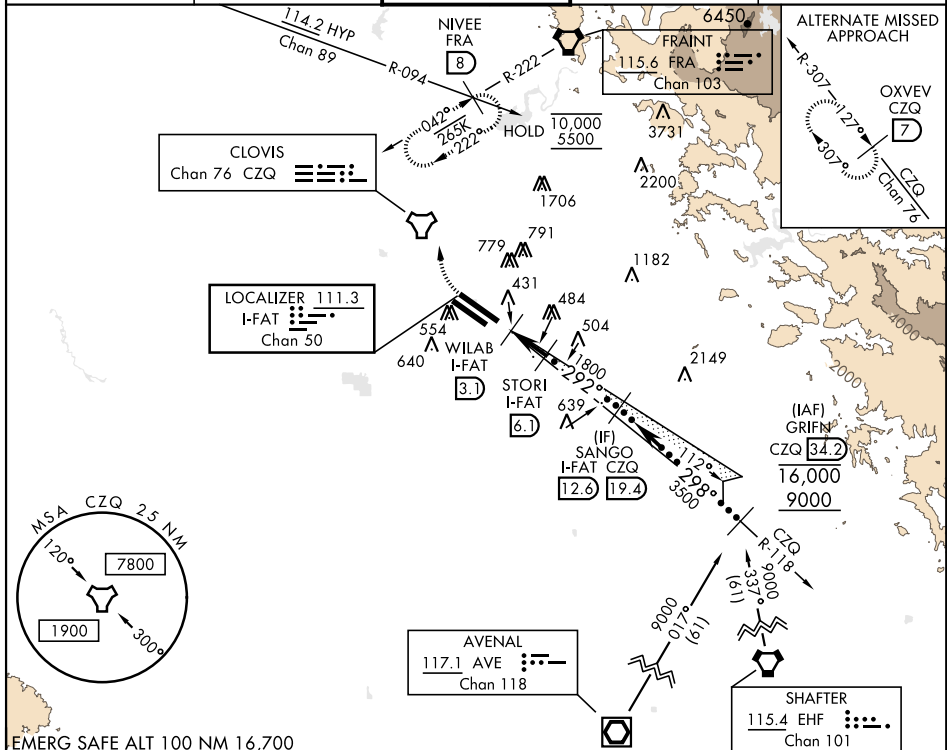
LOC/DME I-FAT 111.3 Chan 50	APCH CRS 292°	Rwy Idg 29R 9227 TDZE 29R 333 Arprt Elev 336	29L 8008 29L 331
---	-------------------------	---	-----------------------------------

AL-162 [USAF] FRESNO YOSEMITE INTL (KFAT)

DME required. **ALSIF-2** MISSED APPROACH: Climb to 800, then climbing right turn to 5500 on heading 330° and FRA VORTAC R-222 to NIVEE int (FRA 8 DME) and hold, continue climb-in-hold to 5500.

* When ALS inop, incr CAT CDE RVR to 40 and vis to ¼ mile.
** When ALS inop, incr CAT CDE RVR to 55 and vis to 1 mile.

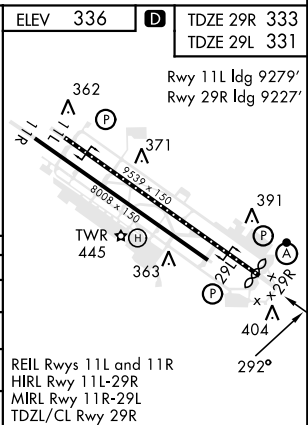
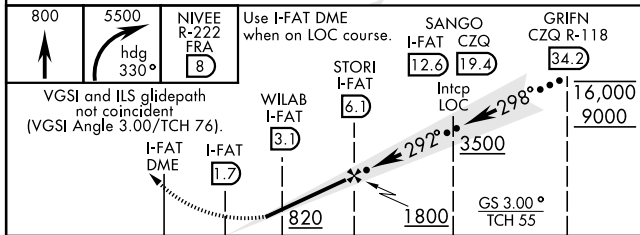
ATIS 121.35 273.6	APP CON 132.35 323.25	TOWER 118.2 251.1	GND CON 121.7 348.6	CLNC DEL 124.35 348.6
-----------------------------	---------------------------------	-----------------------------	-------------------------------	---------------------------------



SW-2, 23 JAN 2025 to 20 FEB 2025

SW-2, 23 JAN 2025 to 20 FEB 2025

EMERG SAFE ALT 100 NM 16,700



CATEGORY	C	D	E
S-ILS 29R*	533/18	200	(200-½)
S-LOC 29R**	700/35	367	(400-¾)
SIDE STEP RWY 29L	700-1½ 369 (400-1½)	700-2	369 (400-2)
CIRCLING	920-1½ 584 (600-1½)	920-2 584 (600-2)	1140-2¾ 804 (900-2¾)

REIL Rwy 11L and 11R
HIRL Rwy 11L-29R
MIRL Rwy 11R-29L
TDZL/CL Rwy 29R

FRESNO, CALIFORNIA
Amdt 4A 03NOV22

36°47'N-119°43'W

FRESNO YOSEMITE INTL (KFAT)

HI-ILS Z or LOC Z RWY 29R