

HI-TACAN RWY 29R

TACAN CZQ Chan 76	APCH CRS 307°	Rwy ldg 29R 9227 TDZE 29L 333 Arprt Elev 336	29L 8008 29L 331
----------------------	------------------	---	-----------------------------------

[USAF] FRESNO YOSEMITE INTL (KFAT)

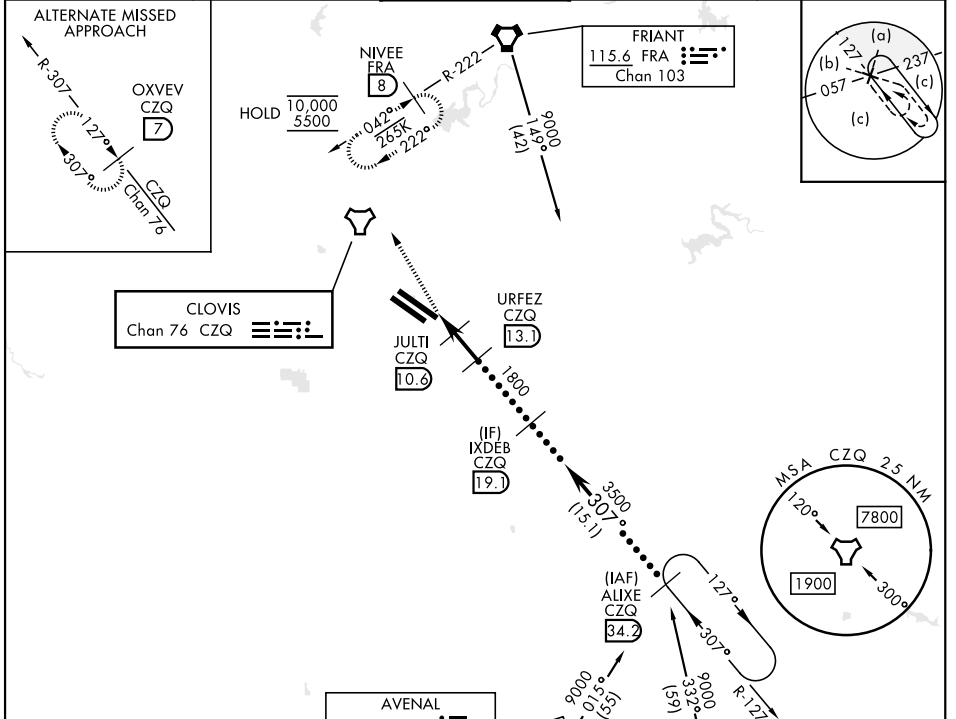
DME required

ALS-F-2

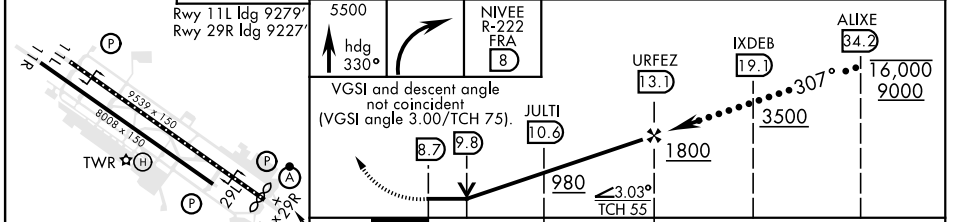
MISSED APPROACH: Climb to 5500 on heading 330° and FRA VORTAC R-222 to NIVEE/FRA 8 DME and hold, continue climb-in-hold to 5500.

* When ALS inop, increase CAT CDE vis to 1 1/4 miles.

ATIS 121.35 273.6	APP CON 132.35 323.25	TOWER 118.2 251.1	GND CON 121.7 348.6	CLNC DEL 124.35 348.6
-----------------------------	---------------------------------	-----------------------------	-------------------------------	---------------------------------



EMERG SAFE ALT 100 NM 16,700	ELEV 336	D	TDZE 29R 333	TDZE 29L 331
------------------------------	----------	---	--------------	--------------



CATEGORY	C	D	E
S-29R *	760/40	427	(500-34)
SIDESTEP 29L	760-1 1/2 429 (500-1 1/2)	760-2	429 (500-2)
CIRCLING	920-1 1/2 584 (600-1 1/2)	920-2 584 (600-2)	1140-2 3/4 804 (900-2 3/4)

HI-TACAN RWY 29R

SW-2, 23 JAN 2025 to 20 FEB 2025

SW-2, 23 JAN 2025 to 20 FEB 2025