

LOC/DME I-FAT <b>111.3</b> Chan <b>50</b>	APP CRS <b>292°</b>	Rwy Idg <b>29R</b> TDZE <b>333</b> Apt Elev <b>336</b>	<b>29L</b> <b>8008</b> <b>331</b> <b>336</b>
---	------------------------	---	---

# ILS Y or LOC Y RWY 29R

FRESNO YOSEMITE INTL (FAT)

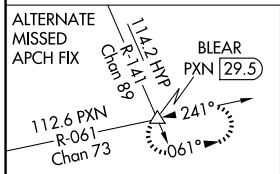
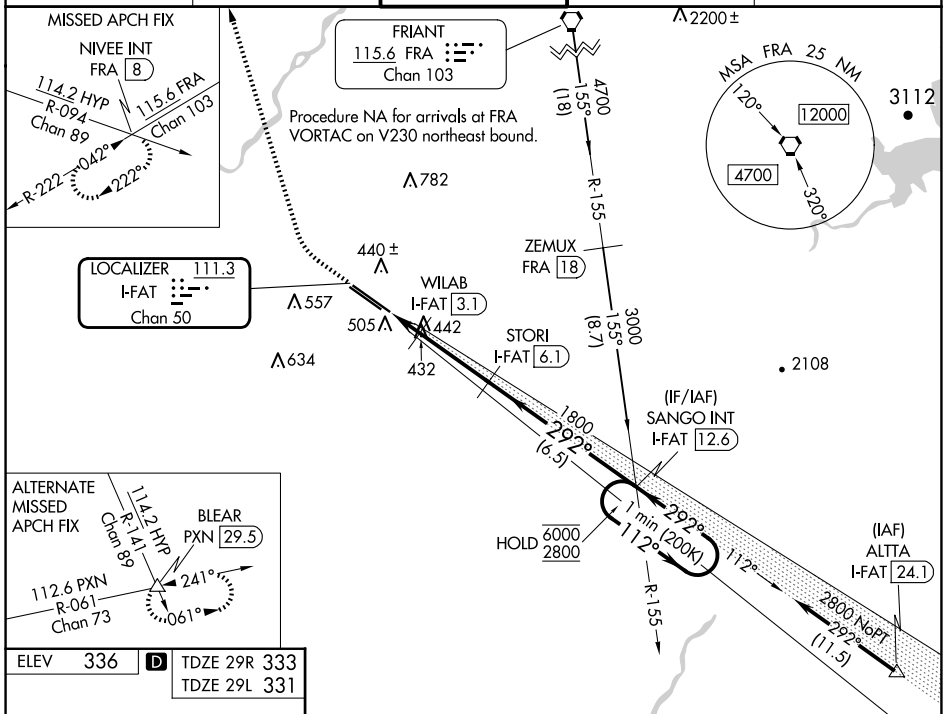
DME required for LOC only.

**▼** For inop ALS, increase S-ILS 29R Cat E visibility to RVR 4000 and S-LOC 29R Cats C, D and E visibility to RVR 5500. Hold in lieu of PT NA for Cat E aircraft.

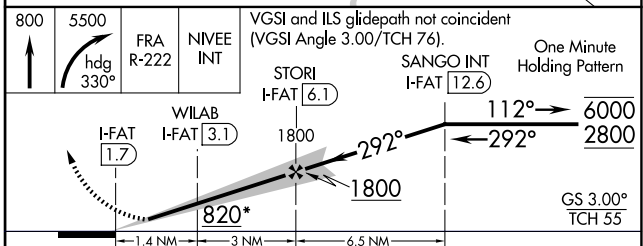
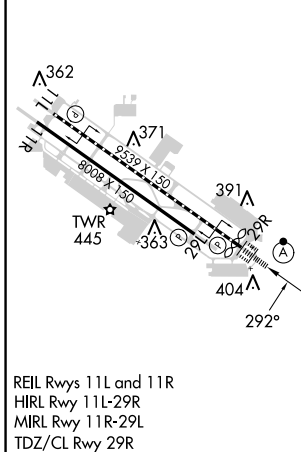
ALS-F-2  
Rwy 29R

MISSED APPROACH: Climb to 800 then climbing right turn to 5500 on heading 330° and FRA VORTAC R-222 to NIVEE INT/FRA 8 DME and hold, continue climb-in-hold to 5500.

ATIS <b>121.35 273.6</b>	FRESNO APP CON <b>119.6 351.95</b>	FRESNO TOWER <b>118.2 251.1</b>	GND CON <b>121.7 348.6</b>	CLNC DEL <b>124.35 348.6</b>
-----------------------------	---------------------------------------	------------------------------------	-------------------------------	---------------------------------



ELEV 336	<b>D</b>	TDZE 29R 333	TDZE 29L 331
----------	----------	--------------	--------------



CATEGORY	A	B	C	D	E
S-ILS 29R	533/18 200 (200-½)				
S-LOC 29R	700/24	367 (400-½)	700/35 367 (400-¾)		
SIDESTEP 29L	700/55	369 (400-1)	700-1½ 369 (400-1½)	700-2	369 (400-2)
<b>C</b> CIRCLING	820-1	484 (500-1)	920-1½ 584 (600-1½)	920-2	1140-2¾ 804 (900-2¾)

SW-2, 23 JAN 2025 to 20 FEB 2025

SW-2, 23 JAN 2025 to 20 FEB 2025