

LOC/DME I-SXH 108.95 Chan 26(Y)	APP CRS 093°	Rwy Ldg TDZE 669 Apt Elev 680	10540
--	------------------------	---	--------------

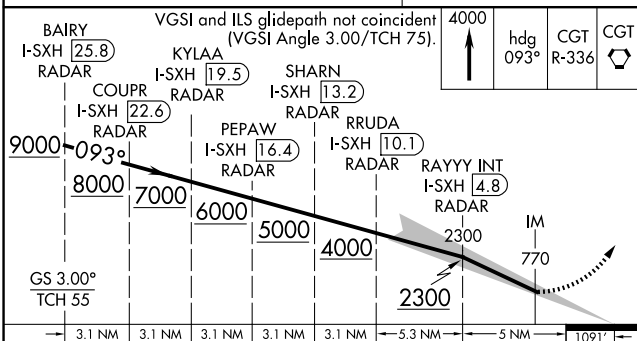
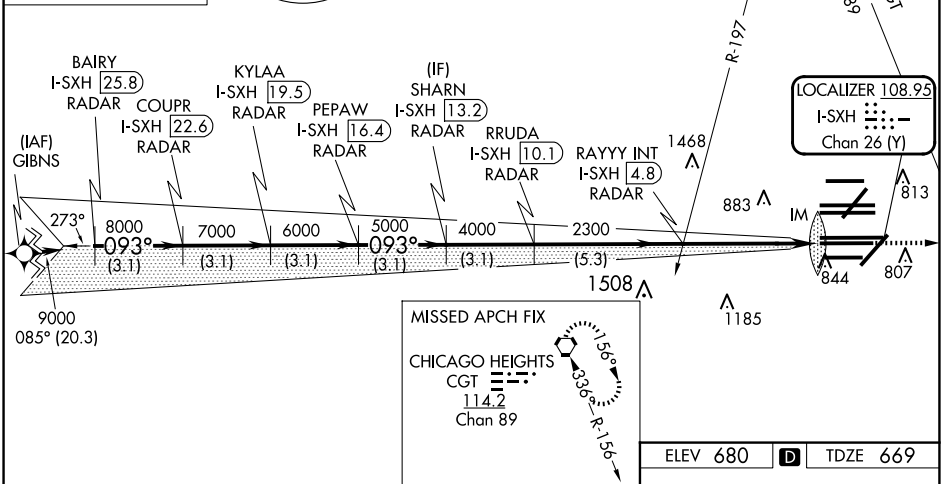
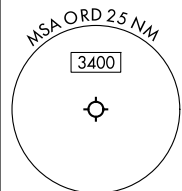
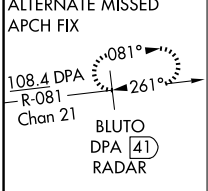
ILS RWY 10C (CAT II & III)

CHICAGO O'HARE INTL (ORD)

From GIBNS: RNAV-1 GPS required.
 RNAV 1-GPS or RADAR required for procedure entry. DME or RADAR required.
 Simultaneous approach authorized. CAT II: RVR 1000 authorized with specific OPSPEC, MSPEC, or LOA approval and use of autoland or HUD to touchdown.

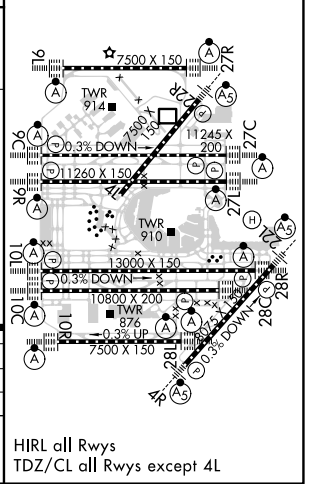
ALSF-2 MISSED APPROACH: Climb to 4000 on heading 093° and CGT VORTAC R-336 to CGT VORTAC and hold.

D-ATIS 135.4 282.225	CHICAGO APP CON 119.0 292.125	O'HARE TOWER 120.75 348.0	GND CON (TWR CENTER) 124.125 121.75 (TWR NORTH) 118.05 121.9 (TWR SOUTH) 226.675 (ALL TWRs)	(TWR CENTER) (OBND) 121.75 (IBND) 121.9	CLNC DEL 121.6	CPDLC
--	--	--	---	--	--------------------------	-------



ELEV 680	D	TDZE 669
----------	----------	----------

BAIRY I-SXH [25.8] RADAR	KYLAA I-SXH [19.5] RADAR	SHARN I-SXH [13.2] RADAR	PEPAW I-SXH [16.4] RADAR	RRUDA I-SXH [10.1] RADAR	RAYYY INT I-SXH [4.8] RADAR	IM 770
3.1 NM	3.1 NM	3.1 NM	3.1 NM	3.1 NM	5.3 NM	5 NM
A		B		C		D
S-ILS 10C CAT II RA 102/12 100 DA 769						
S-ILS 10C CAT III RVR 06						



EC-3, 23 JAN 2025 to 20 FEB 2025

EC-3, 23 JAN 2025 to 20 FEB 2025