

LOC/DME I-UYJ 111.9 Chan 56	APP CRS 273°	Rwy ldg 11245 TDZE 653 Apt Elev 680
--	------------------------	--

ILS RWY 27C (SA CAT I)

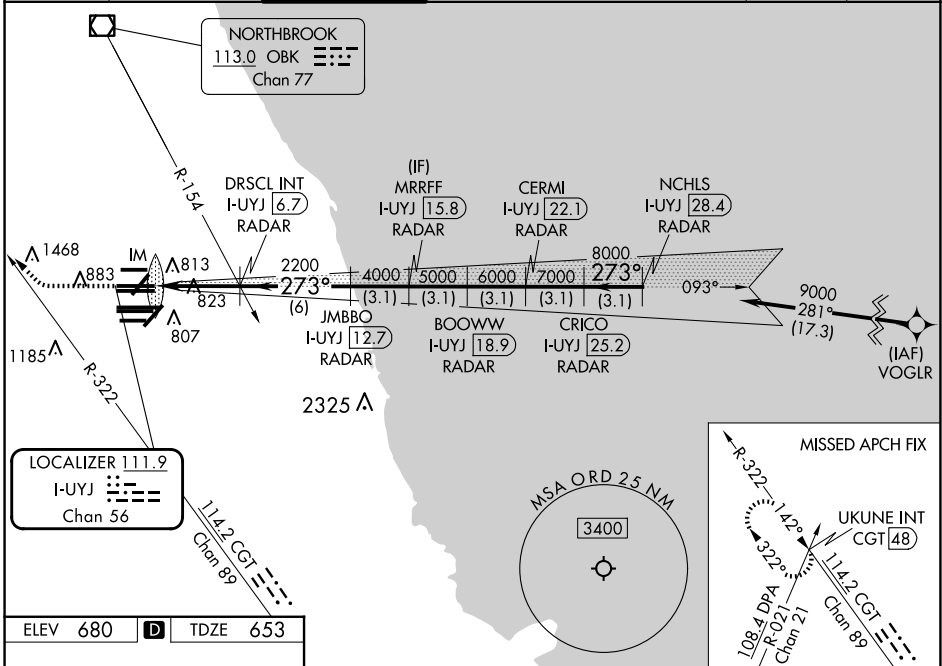
CHICAGO O'HARE INTL (ORD)

From VOGLR: RNAV 1-GPS required. Aircraft not GPS equipped - RADAR required for procedure entry, DME or RADAR required.

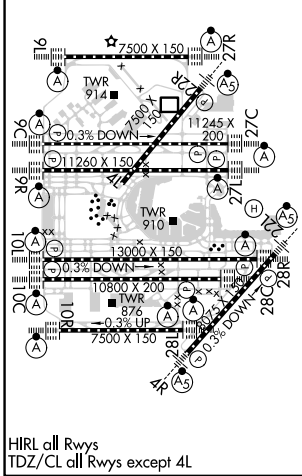
ALS-F-2 MISSED APPROACH: Climb to 1100 then climbing right turn to 4000 on heading 290° and CGT R-322 to UKUNE INT/CGT 48 DME and hold.

Simultaneous approach authorized. Requires specific OPSPEC, MSPEC, or LOA approval.

D-ATIS 135.4 282.225	CHICAGO APP CON 119.0 292.125	O'HARE TOWER 121.15 348.0	GND CON (TWR NORTH) 124.125 (TWR SOUTH) 118.05 (ALL TWRS) 226.675	(TWR CENTER) (OBND) 121.75 (IBND) 121.9	CLNC DEL 121.6	CPDLC
--	---	-------------------------------------	---	--	--------------------------	-------



ELEV 680	D	TDZE 653
----------	----------	----------



1100	4000	CGT R-322	UKUNE INT	VGSI and ILS glidepath not coincident (VGSI Angle 3.00/TCH 75).	NCHLS I-UYJ [28.4] RADAR
↑	hdg 290°	DRISCL INT I-UYJ [6.7] RADAR	MRRFF I-UYJ [15.8] RADAR	CERMI I-UYJ [22.1] RADAR	CRICO I-UYJ [25.2] RADAR
IM	2200	JMBBO I-UYJ [12.7] RADAR	BOOWW I-UYJ [18.9] RADAR	2200	8000
4000	5000	6000	7000	9000	GS 3.00° TCH 56
4.7 NM	6 NM	3.1 NM	3.1 NM	3.1 NM	3.1 NM
CATEGORY A	B	C	D		
S-ILS 27C	RA 158/14	150	DA 803		

SA CATEGORY I ILS - SPECIAL AIRCREW & AIRCRAFT CERTIFICATION REQUIRED

EC-3, 23 JAN 2025 to 20 FEB 2025

EC-3, 23 JAN 2025 to 20 FEB 2025