

CHICAGO, ILLINOIS

AL-166 (FAA)

24305


LOC/DME I-IAC <b>110.5</b> Chan <b>42</b>	APP CRS <b>273°</b>	Rwy ldg <b>11260</b> TDZE <b>654</b> Apt Elev <b>680</b>
---	------------------------	--

# ILS RWY 27L (CAT II & III)

CHICAGO O'HARE INTL (ORD)

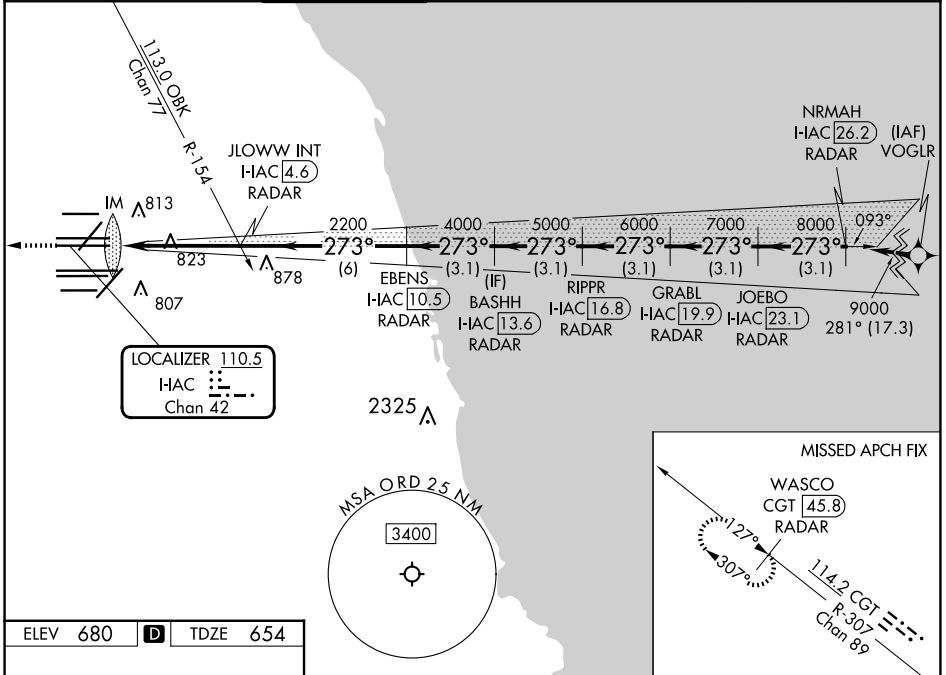
RNP APCH-GPS from VOGLR.

Aircraft not GPS equipped - RADAR required for procedure entry. DME or RADAR required.

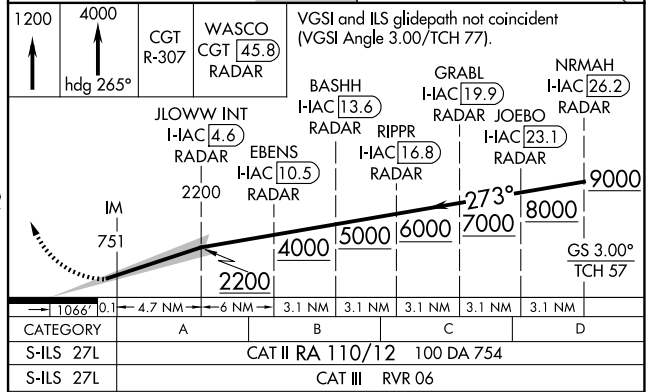
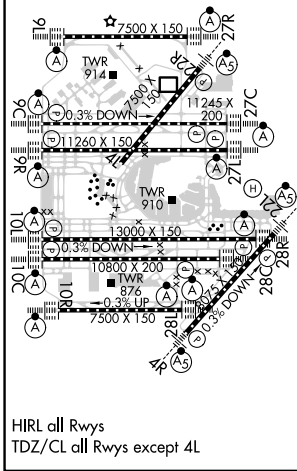
ALSF-2  MISSED APPROACH: Climb to 1200 then climb to 4000 on heading 265° and on CGT VORTAC R-307 to WASCO/CGT 45.8 DME/RADAR and hold.

Simultaneous approach authorized.

D-ATIS <b>135.4</b> <b>282.225</b>	CHICAGO APP CON <b>119.0 292.125</b>	O'HARE TOWER <b>126.9 348.0</b>	GND CON (TWR CENTER) <b>124.125</b> (TWR NORTH) <b>118.05</b> (TWR SOUTH) <b>226.675</b> (ALL TWRs)	(TWR CENTER) <b>121.75</b> (OBND) <b>121.9</b> (IBND)	CLNC DEL <b>121.6</b>	CPDLC
--	---	------------------------------------	--	---	--------------------------	-------



ELEV 680	<b>D</b>	TDZE 654
----------	----------	----------



CATEGORY	A	B	C	D
S-ILS 27L	CAT II RA 110/12 100 DA 754			
S-ILS 27L	CAT III RVR 06			

## CATEGORY II & III ILS - SPECIAL AIRCREW & AIRCRAFT CERTIFICATION REQUIRED

CHICAGO, ILLINOIS  
Amdt 33 14JUL22

41°59'N-87°54'W

CHICAGO O'HARE INTL (ORD)  
ILS RWY 27L (CAT II & III)

EC-3, 23 JAN 2025 to 20 FEB 2025

EC-3, 23 JAN 2025 to 20 FEB 2025