

LOC/DME I-VQX <b>110.75</b> Chan 44 (Y)	APP CRS <b>274°</b>	Rwy ldg TDZE Apt Elev	<b>7500</b> <b>667</b> <b>680</b>
---	------------------------	-----------------------------	---

# ILS RWY 28L (SA CAT I)

CHICAGO O'HARE INTL (ORD)

From VOGLR: RNAV 1-GPS required.

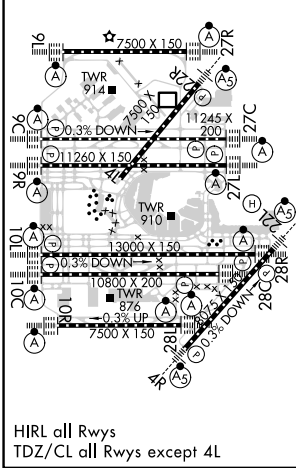
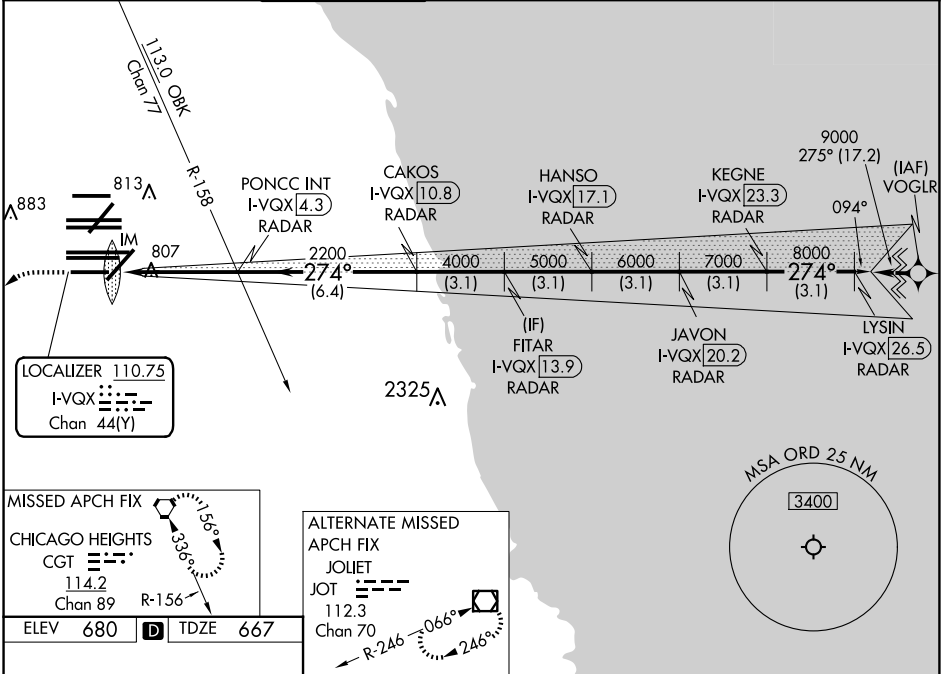
Aircraft not GPS equipped - RADAR required for procedure entry. DME or RADAR required.

Simultaneous approach authorized.  
Requires specific OPSPEC, MSPEC, or LOA approval and use of HUD to DH.

ALSIF-2

MISSED APPROACH: Climb to 1200 then climbing left turn to 4000 direct CGT VORTAC and hold.

D-ATIS <b>135.4</b> <b>282.225</b>	CHICAGO APP CON <b>119.0 292.125</b>	O'HARE TOWER <b>133.0 348.0</b>	GND CON (TWR NORTH) <b>124.125</b> (TWR SOUTH) <b>118.05</b> (ALL TWRs) <b>226.675</b>	(TWR CENTER) (OBND) <b>121.75</b> (IBND) <b>121.9</b>	CLNC DEL <b>121.6</b>	CPDLC
--	---	------------------------------------	---	--	--------------------------	-------



1200	4000	CGT				
			FITAR I-VQX 13.9	JAVON I-VQX 20.2	LYSIN I-VQX 26.5	
			RADAR	RADAR	RADAR	
			PONCC INT I-VQX 4.3	HANSO I-VQX 17.1	KEGNE I-VQX 23.3	
			RADAR	RADAR	RADAR	
			CAKOS I-VQX 10.8			
			RADAR			
			2200	4000	5000	6000
			274°	7000	8000	9000
			994'	4.7 NM	6.4 NM	3.1 NM
			3.1 NM	3.1 NM	3.1 NM	3.1 NM
CATEGORY	A	B	C	D		
S-ILS 28L	RA 157/14			150 DA 817		

**SA CATEGORY I ILS-SPECIAL AIRCREW & AIRCRAFT CERTIFICATION REQUIRED**

EC-3, 23 JAN 2025 to 20 FEB 2025

EC-3, 23 JAN 2025 to 20 FEB 2025