

LOC/DME I-OYG 111.9 Chan 56	APP CRS 093°	Rwy Idg 11245 TDZE 673 Apt Elev 680
--	------------------------	--

ILS RWY 9C (SA CAT I)

CHICAGO O'HARE INTL (ORD)

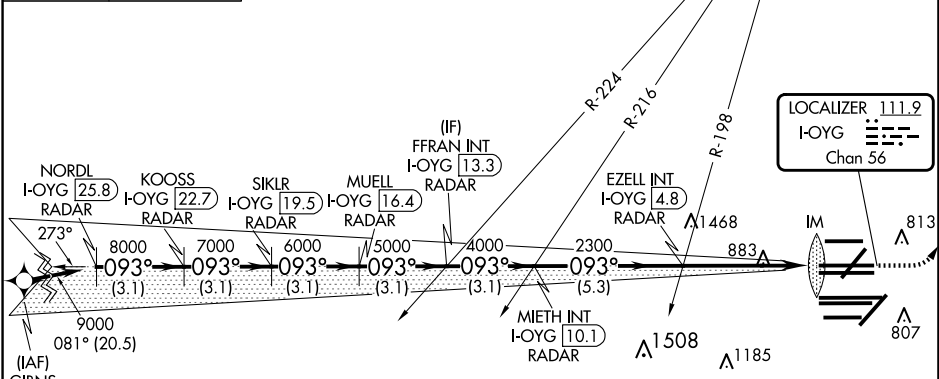
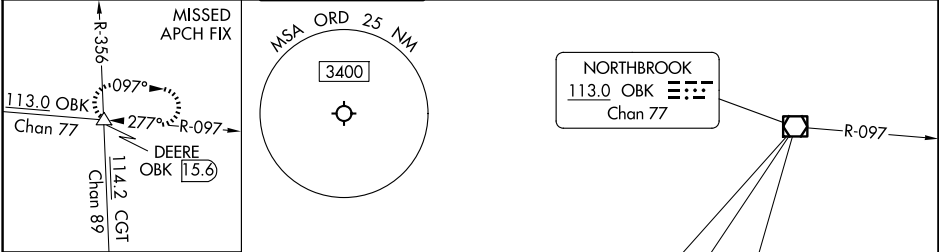
DME or RADAR required. From GIBNS: RNAV 1-GPS required. Aircraft not GPS equipped - RADAR required for procedure entry.

MISSED APPROACH: Climb to 1200 then climbing left turn to 4000 on heading 037° and OBK VOR/DME R-097 to DEERE INT/OBK 15.6 DME and hold.

Simultaneous approach authorized. Requires specific OPSPEC, MSPEC or LOA approval.

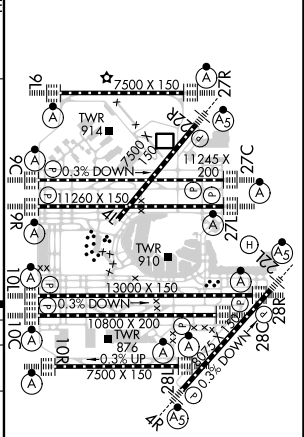
ALSIF-2

D-ATIS 135.4 282.225	CHICAGO APP CON 119.0 292.125	O'HARE TOWER 121.15 348.0	124.125 118.05 226.675 (ALL TWRS)	GND CON (TWR CENTER) 121.75 (OBND) 121.9 (IBND)	CLNC DEL 121.6	CPDLC
--	--	--	--	---	--------------------------	-------



NORDL I-OYG 25.8 RADAR	VGSI and ILS glidepath not coincident (VGSI Angle 3.00/TCH 72).	1200	4000	DEERE
KOOSS I-OYG 22.7 RADAR	SIKLR I-OYG 19.5 RADAR	hdg 037°	OBK R-097	△
SIKLR I-OYG 19.5 RADAR	FFRAN INT I-OYG 13.3 RADAR			
MUELL I-OYG 16.4 RADAR	EZELL INT I-OYG 4.8 RADAR			
MIETH INT I-OYG 10.1 RADAR				
3.1 NM	3.1 NM	3.1 NM	3.1 NM	5.3 NM
9000	8000	7000	6000	5000
4000	2300			
GS 3.00° TCH 55				

ELEV 680	D	TDZE 673
----------	---	----------



CATEGORY	A	B	C	D
S-ILS 9C	RA 154/14 150 DA 823			

SA CATEGORY I ILS - SPECIAL AIRCREW & AIRCRAFT CERTIFICATION REQUIRED

HIRL all Rwys
TDZ/CL all Rwys except 4L

EC-3, 23 JAN 2025 to 20 FEB 2025

EC-3, 23 JAN 2025 to 20 FEB 2025