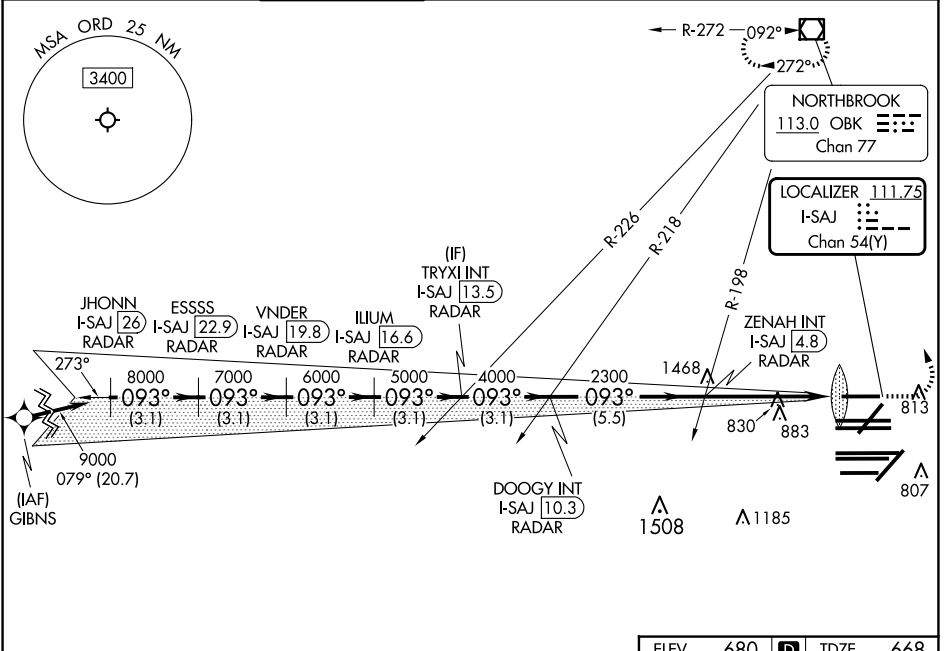


LOC/DME I-SAJ 111.75 Chan 54 (Y)	APP CRS 093°	Rwy Idg 7500 TDZE 668 Apt Elev 680
---	------------------------	--

ILS RWY 9L (CAT II & III)

CHICAGO O'HARE INTL (ORD)

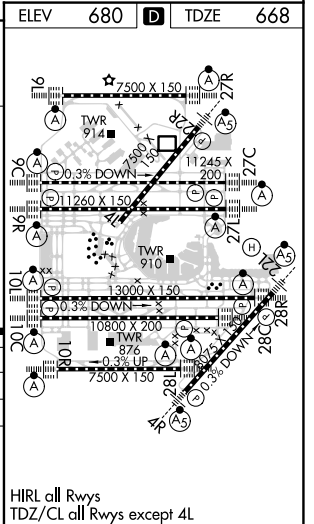
RNAV-1 GPS or RADAR required for procedure entry. RADAR or DME required.		ALSF-2 	MISSED APPROACH: Climb to 1100 then climbing left turn to 4000 direct OBK VOR/DME and hold, continue climb-in-hold to 4000.	
Simultaneous approach authorized.				
D-ATIS 135.4 282.225	CHICAGO APP CON 119.0 292.125	O'HARE TOWER 128.15 348.0	GND CON (TWR CENTER) 124.125 (TWR NORTH) 118.05 (TWR SOUTH) 226.675 (ALL TWRs)	CLNC DEL 121.6
			CPDLC	



EC-3, 23 JAN 2025 to 20 FEB 2025

EC-3, 23 JAN 2025 to 20 FEB 2025

JHONN I-SAJ 26 RADAR	VNDER I-SAJ 19.8 RADAR	TRYXI INT I-SAJ 13.5 RADAR	ZENAH INT I-SAJ 4.8 RADAR	1100	4000	OBK
ESSSS I-SAJ 22.9 RADAR	ILUUM I-SAJ 16.6 RADAR	DOOGY INT I-SAJ 10.3 RADAR				
9000	8000	7000	6000	5000	4000	2300
GS 3.00° TCH 55	3.1 NM	3.1 NM	3.1 NM	3.1 NM	3.1 NM	5.5 NM
CATEGORY	A	B	C	D		
S-ILS 9L	CAT II RA 104/12 100 DA 768					
S-ILS 9L	CAT III RVR 06					
CATEGORY II & III ILS - SPECIAL AIRCREW & AIRCRAFT CERTIFICATION REQUIRED						



HIRL all Rwys
TDZ/CL all Rwys except 4L