

LOC/DME I-SXH 108.95 Chan 26(Y)	APP CRS 093°	Rwy ldg TDZE 669 Apt Elev 680
--	------------------------	---

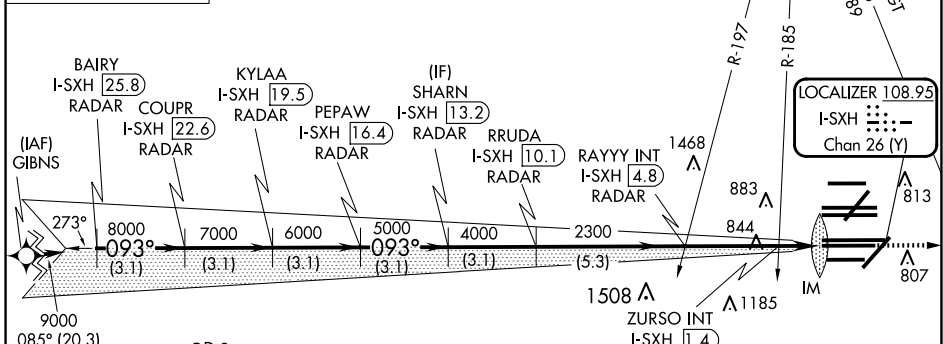
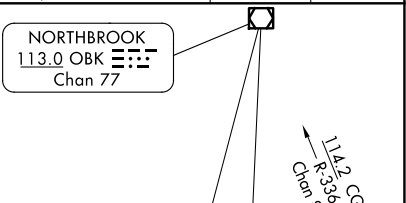
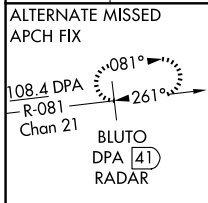
ILS or LOC RWY 10C

CHICAGO O'HARE INTL (ORD)

From GIBNS: RNAV-1 GPS required.
 RNAV 1-GPS or RADAR required for procedure entry. DME or RADAR required.
 Simultaneous approach authorized.

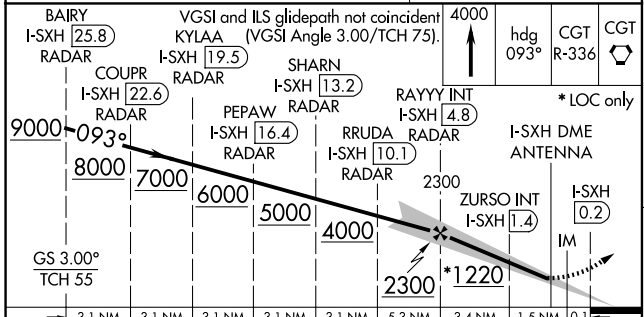
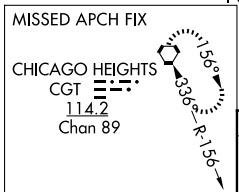
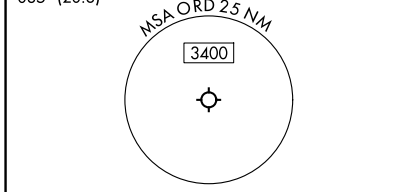
ALSIF-2
 MISSED APPROACH: Climb to 4000 on heading 093° and CGT VORTAC R-336 to CGT VORTAC and hold.

D-ATIS 135.4 282.225	CHICAGO APP CON 119.0 292.125	O'HARE TOWER 120.75 348.0	GND CON (TWR CENTER) 124.125 (TWR NORTH) 118.05 (TWR SOUTH) 226.675 (ALL TWRs)	(TWR CENTER) 121.75 (OBND) 121.9 (IBND)	CLNC DEL 121.6	CPDLC
--	---	-------------------------------------	--	---	--------------------------	-------

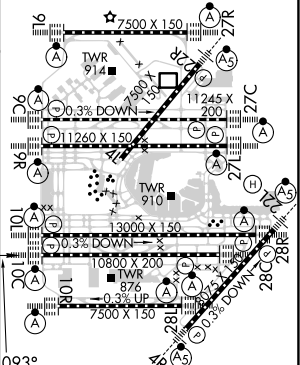


EC-3, 23 JAN 2025 to 20 FEB 2025

EC-3, 23 JAN 2025 to 20 FEB 2025



ELEV 680	TDZE 669
----------	----------



BAIRY I-SXH (25.8) RADAR	COUPR I-SXH (22.6) RADAR	KYLAA I-SXH (19.5) RADAR	SHARN I-SXH (13.2) RADAR	PEPAW I-SXH (16.4) RADAR	RRUDA I-SXH (10.1) RADAR	RAYYY INT I-SXH (4.8) RADAR	ZURSO INT I-SXH (1.4)	I-SXH DME ANTENNA	I-SXH (0.2)							
VGSI and ILS glidepath not coincident KYLAA (VGSI Angle 3.00/TCH 75).								4000	hdg 093°	CGT R-336	CGT					
GS 3.00° TCH 55								2300	*1220	IM	093°					
3.1 NM		3.1 NM		3.1 NM		3.1 NM		5.3 NM		3.4 NM		1.5 NM		0.1 NM		
CATEGORY	A				B				C				D			
S-ILS 10C	869/18												200 (200-½)			
S-LOC 10C	1220/24				551 (600-½)				1220/60				551 (600-1¼)			
ZURSO FIX MINIMUMS (DUAL VOR RECEIVERS OR DME REQUIRED)																
S-LOC 10C	1100/24				431 (500-½)				1100/40				431 (500-¾)			

HIRL all Rwy's TDZ/CL all Rwy's except 4L					
FAF to MAP 5 NM					
Knots	60	90	120	150	180
Min:Sec	5:00	3:20	2:30	2:00	1:40