

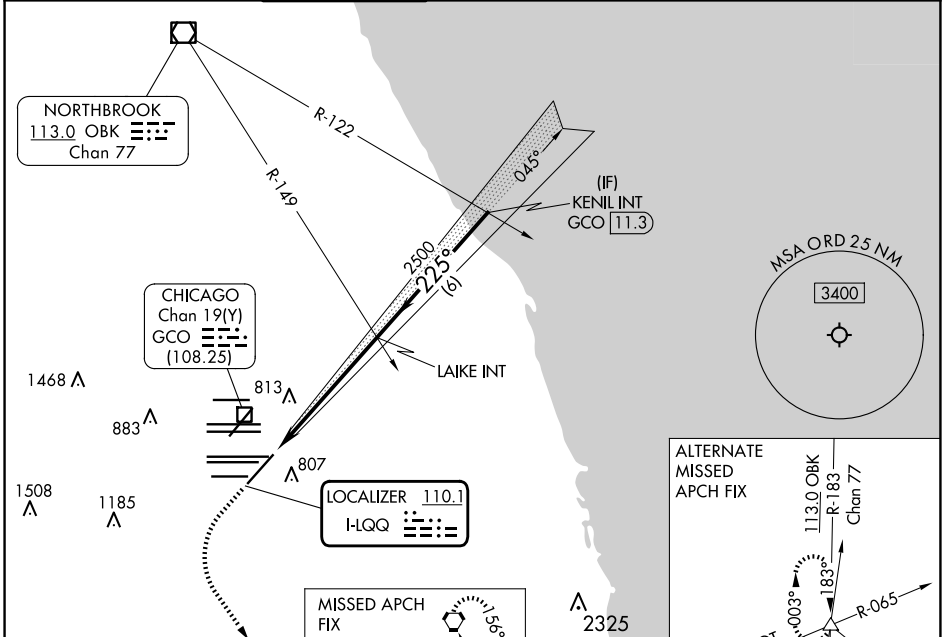
ILS or LOC RWY 22L

CHICAGO O'HARE INTL (ORD)

LOC I-LQQ 110.1	APP CRS 225°	Rwy ldg TDZE Apt Elev	8075 654 680
---------------------------	------------------------	-----------------------------	---

RADAR required for procedure entry.		MALSR	MISSED APPROACH: Climb to 1100 then climbing left turn to 4000 direct CGT VORTAC and hold.
Simultaneous approach authorized.			

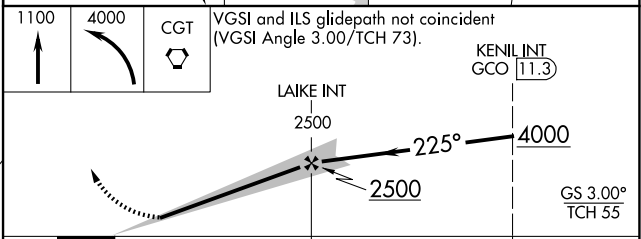
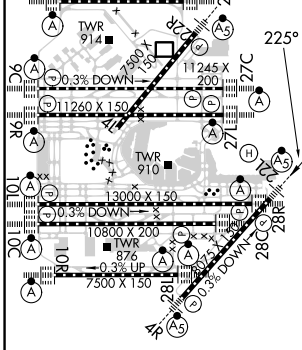
D-ATIS 135.4 282.225	CHICAGO APP CON 119.0 292.125	O'HARE TOWER 120.75 348.0	124.125 GND CON 118.05 (TWR NORTH) 226.675 (TWR SOUTH) <small>(ALL TWRs)</small>	(TWR CENTER) 121.75 (OBND) 121.9 (IBND)	CLNC DEL 121.6	CPDLC
--	---	-------------------------------------	--	---	--------------------------	-------



ELEV 680	D TDZE 654
TDZ/CL all Rwy's except 4L	
HIRL all Rwy's	

MISSED APCH FIX	CHICAGO HEIGHTS
	CGT
	114.2
	Chan 89

1100	4000	CGT	VGSI and ILS glidepath not coincident (VGSI Angle 3.00/TCH 73).



FAF to MAP 5.6 NM					
Knots	60	90	120	150	180
Min:Sec	5:36	3:44	2:48	2:14	1:52

CATEGORY	A	B	C	D
S-ILS 22L	854/18 200 (200-1/2)			
S-LOC 22L	1120/24	466 (500-1/2)	1120/50	466 (500-1)
C CIRCLING	1220-1	540 (600-1)	1220-1 1/2	1460-2 1/2
			540 (600-1 1/2)	780 (800-2 1/2)

EC-3, 23 JAN 2025 to 20 FEB 2025

EC-3, 23 JAN 2025 to 20 FEB 2025