

| | | |
|--|------------------------|--|
| LOC/DME I-UYJ 111.9 Chan 56 | APP CRS 273° | Rwy ldg 11245 TDZE 653 Apt Elev 680 |
|--|------------------------|--|

ILS or LOC RWY 27C

CHICAGO O'HARE INTL (ORD)

From VOGLR: RNAV 1-GPS required. Aircraft not GPS equipped - RADAR required for procedure entry. DME or RADAR required.

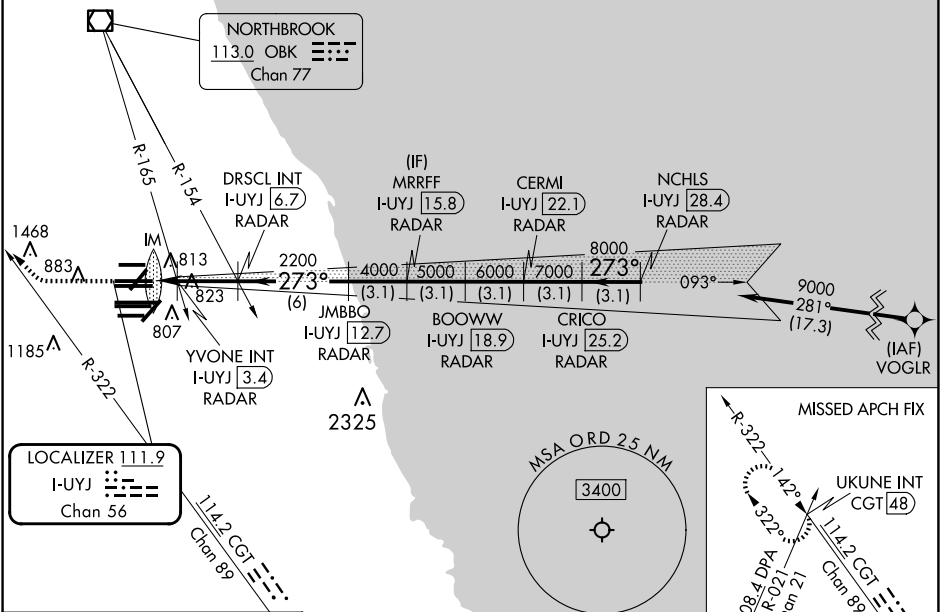
ALS-F-2



MISSED APPROACH: Climb to 1100 then climbing right turn to 4000 on heading 290° and CGT R-322 to UKUNE INT/ CGT 48 DME and hold.

Simultaneous approach authorized. For inop ALS, increase S-LOC 27C Cat C/D visibility to 1½ SM.

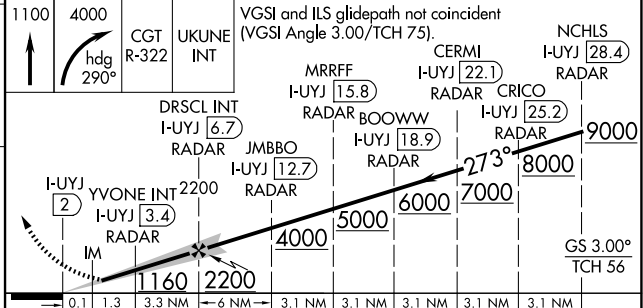
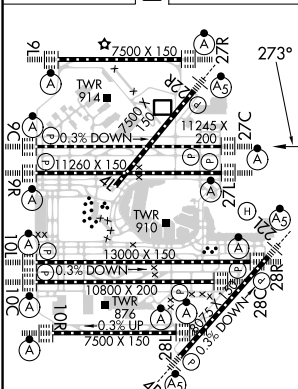
| | | | | | | |
|--|---|-------------------------------------|---|--|--------------------------|-------|
| D-ATIS 135.4 282.225 | CHICAGO APP CON 119.0 292.125 | O'HARE TOWER 121.15 348.0 | GND CON (TWR NORTH) 124.125 (TWR SOUTH) 118.05 (ALL TWRS) 226.675 | (TWR CENTER) (OBND) 121.75 (IBND) 121.9 | CLNC DEL 121.6 | CPDLC |
|--|---|-------------------------------------|---|--|--------------------------|-------|



EC-3, 23 JAN 2025 to 20 FEB 2025

EC-3, 23 JAN 2025 to 20 FEB 2025

| | | |
|----------|----------|----------|
| ELEV 680 | D | TDZE 653 |
|----------|----------|----------|



HIRL all Rwws
TDZ/CL all Rwws except 4L

FAF to MAP 4.7 NM

| | | | | | |
|---------|------|------|------|------|------|
| Knots | 60 | 90 | 120 | 150 | 180 |
| Min:Sec | 4:42 | 3:08 | 2:21 | 1:53 | 1:34 |

| | | | | |
|---|--------------------|-------------|---------|-------------|
| CATEGORY | A | B | C | D |
| S-ILS 27C | 853/18 200 (200-½) | | | |
| S-LOC 27C | 1160/24 | 507 (500-½) | 1160/55 | 507 (500-1) |
| YVONE FIX MINIMUMS (DUAL VOR RECEIVERS or DME REQUIRED) | | | | |
| S-LOC 27C | 1080/24 | 427 (400-½) | 1080/40 | 427 (400-¾) |