


LOC/DME I-VQX 110.75 Chan 44(Y)	APP CRS 274°	Rwy ldg TDZE Apt Elev	7500 667 680
--	------------------------	-----------------------------	---


ILS or LOC RWY 28L

CHICAGO O'HARE INTL (ORD)

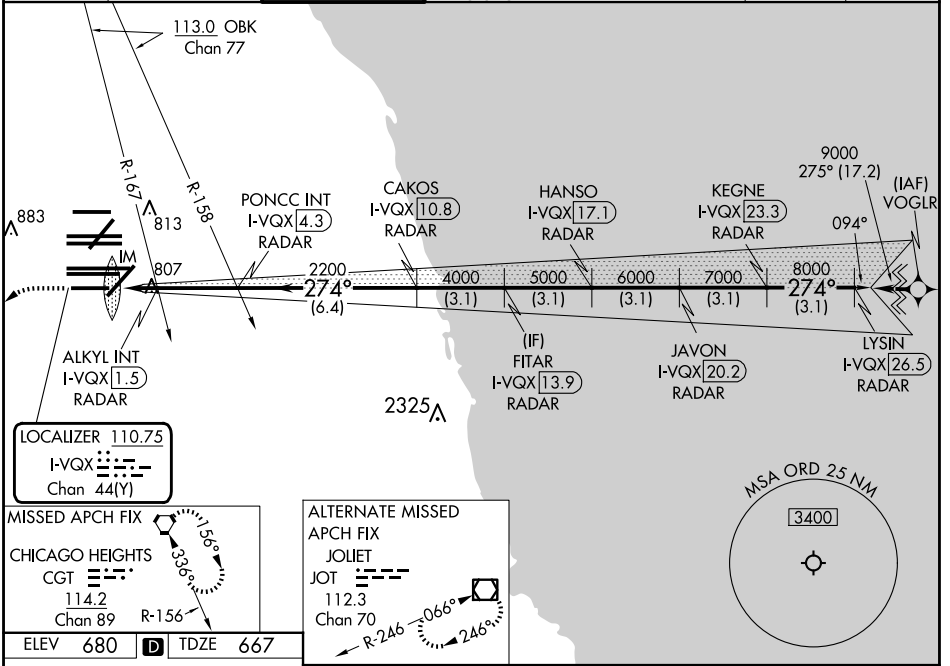
Aircraft not GPS equipped - RADAR required for procedure entry. DME or RADAR required.
From VOGLR: RNAV 1-GPS required.

ALS-F-2 

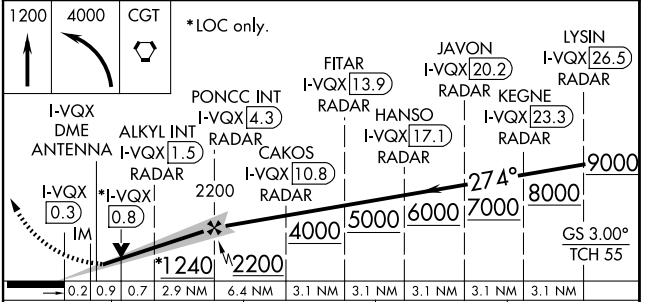
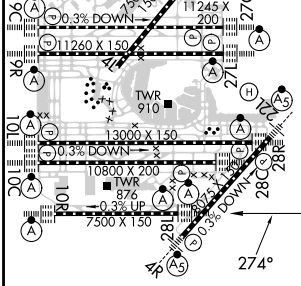
MISSED APPROACH: Climb to 1200 then climbing left turn to 4000 direct CGT VORTAC and hold.

 Simultaneous approach authorized.

D-ATIS 135.4 282.225	CHICAGO APP CON 119.0 292.125	O'HARE TOWER 133.0 348.0	GND CON (TWR CENTER) 124.125 (TWR NORTH) 118.05 (TWR SOUTH) 226.675 (ALL TWRs)	(TWR CENTER) (OBND) 121.75 (OBND) 121.9 (IBND)	CLNC DEL 121.6	CPDLC
--	---	------------------------------------	--	--	--------------------------	-------



ELEV 680	D	TDZE 667
----------	----------	----------



CATEGORY	A	B	C	D
S-ILS 28L	867/18 200 (200-½)			
S-LOC 28L	1240/24	573 (600-½)	1240-1¼	573 (600-1¼)
ALKYL FIX MINIMUMS (DUAL VOR RECEIVERS OR DME REQUIRED)				
S-LOC 28L	1060/24	393 (400-½)	1060/35	393 (400-⅝)

HIRL all Rwy's TDZ/CL all Rwy's except 4L					
FAF to MAP 4.7 NM					
Knots	60	90	120	150	180
Min:Sec	4:42	3:08	2:21	1:53	1:34

EC-3, 23 JAN 2025 to 20 FEB 2025

EC-3, 23 JAN 2025 to 20 FEB 2025