

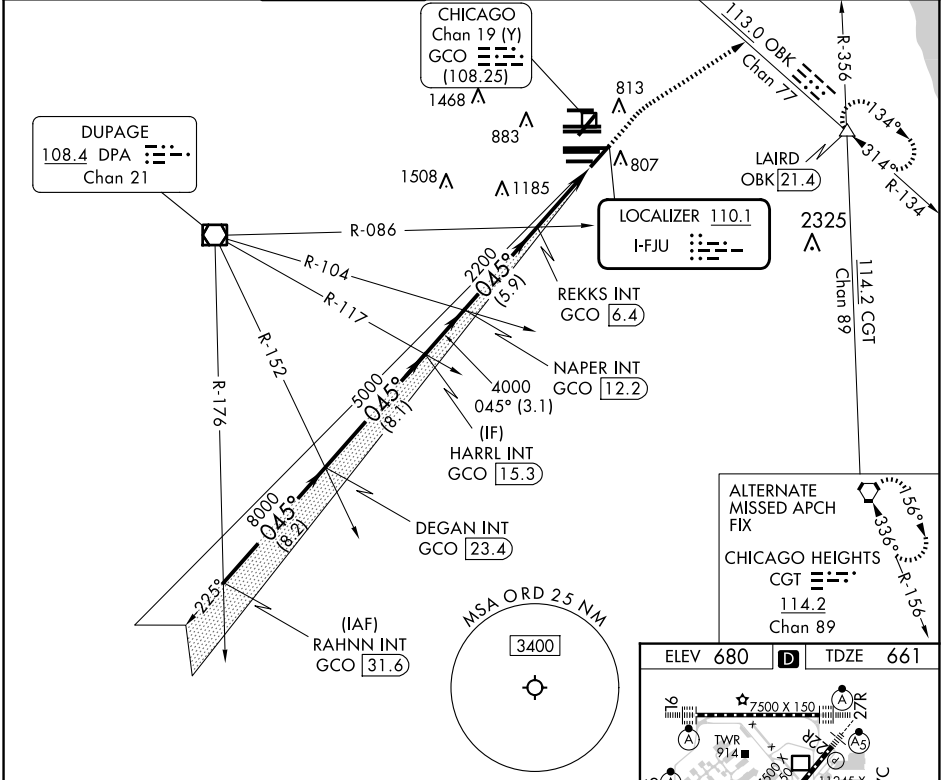
LOC I-FJU 110.1	APP CRS 045°	Rwy ldg TDZE Apt Elev	8075 661 680
---------------------------	------------------------	-----------------------------	---

ILS or LOC RWY 4R

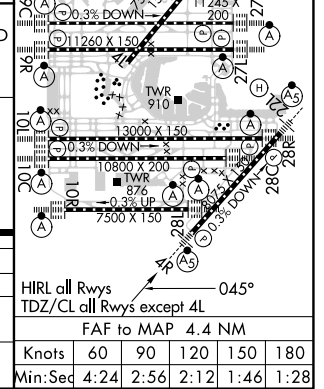
CHICAGO O'HARE INTL (ORD)

RADAR required for procedure entry.		MALSR	MISSED APPROACH: Climb to 1200 then climbing right turn to 4000 on heading 060° and OBK VOR/DME R-134 to LAIRD INT/OBK 21.4 DME and hold.		
-------------------------------------	--	-------	---	--	--

D-ATIS 135.4 282.225	CHICAGO APP CON 119.0 292.125	O'HARE TOWER 120.75 348.0	124.125 (TWR NORTH) 118.05 (TWR SOUTH) 226.675 (ALL TWRs)	GND CON (TWR CENTER) 121.75 (OBND) 121.9 (IBND)	CLNC DEL 121.6	CPDLC
--	---	-------------------------------------	--	---	--------------------------	-------



RAHNN INT GCO 31.6	DEGAN INT GCO 23.4	HARRL INT GCO 15.3	NAPER INT GCO 12.2	REKKS INT GCO 6.4	OBK R-134	LAIRD
VGSI and ILS glidepath not coincident (VGSI Angle 3.00/TCH 67). GS 3.00° TCH 52 11000 ft 8000 ft 045° 5000 ft 4000 ft 2200 ft 2128 ft 8.2 NM, 8.1 NM, 3.1 NM, 5.9 NM, 4.4 NM						



CATEGORY	A	B	C	D
S-ILS 4R	861/18		200 (200-½)	
S-LOC 4R	1160/24	499 (500-½)	1160/50	499 (500-1)
CIRCLING	1220-1	540 (600-1)	1220-1½	1460-2½
			540 (600-1½)	780 (800-2½)
HRL all Rwys TDZ/CL all Rwys except 4L FAF to MAP 4.4 NM Knots: 60 90 120 150 180 Min:Sec: 4:24 2:56 2:12 1:46 1:28				

EC-3, 23 JAN 2025 to 20 FEB 2025

EC-3, 23 JAN 2025 to 20 FEB 2025