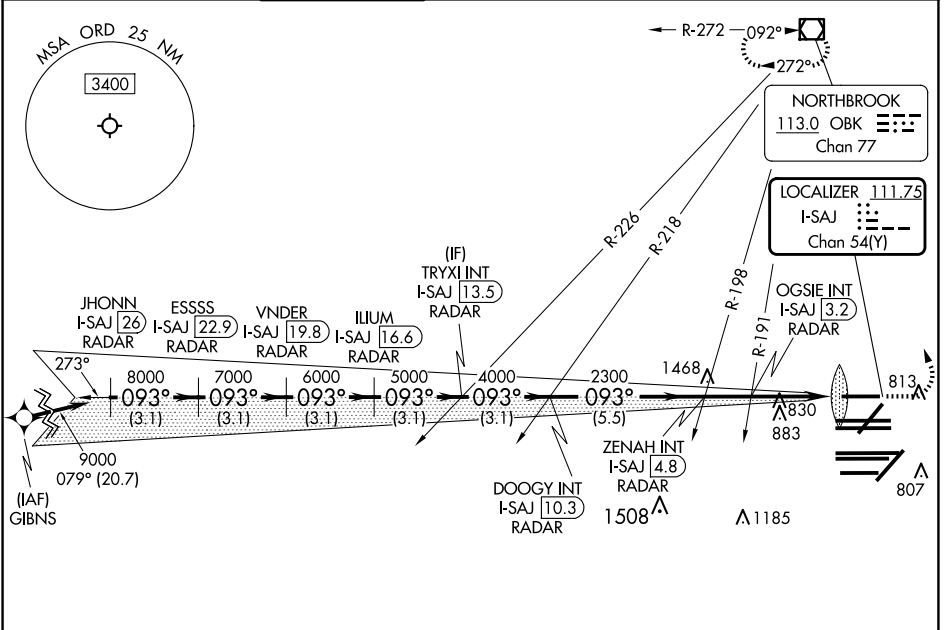


LOC/DME I-SAJ <b>111.75</b> Chan 54 (Y)	APP CRS <b>093°</b>	Rwy Idg <b>7500</b> TDZE <b>668</b> Apt Elev <b>680</b>
---	------------------------	--

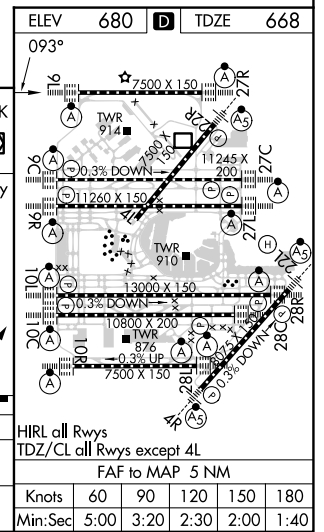
# ILS or LOC RWY 9L

CHICAGO O'HARE INTL (ORD)

RNAV-1 GPS or RADAR required for procedure entry. RADAR or DME required.		MISSED APPROACH: Climb to 1100 then climbing left turn to 4000 direct OBK VOR/DME and hold, continue climb-in-hold to 4000.	
Simultaneous approach authorized.		ALSF-2	
D-ATIS <b>135.4</b> <b>282.225</b>	CHICAGO APP CON <b>119.0 292.125</b>	O'HARE TOWER <b>128.15 348.0</b>	GND CON (TWR CENTER) <b>124.125</b> (TWR NORTH) <b>118.05</b> (TWR SOUTH) <b>226.675</b> (ALL TWRs)
		CLNC DEL <b>121.6</b>	CPDLC



JHONN I-SAJ 26 RADAR	ESSSS I-SAJ 22.9 RADAR	VNDER I-SAJ 19.8 RADAR	ILIUM I-SAJ 16.6 RADAR	DOOGY INT I-SAJ 10.3 RADAR	TRYXI INT I-SAJ 13.5 RADAR	ZENAH INT I-SAJ 4.8 RADAR	OGSIE INT I-SAJ 3.2 RADAR	I-SAJ DME ANTENNA	OBK
3.1 NM	3.1 NM	3.1 NM	3.1 NM	3.1 NM	5.5 NM	1.6 NM	2.2 NM	1.1 NM	0.1 NM
GS 3.00° TCH 55		9000 093°		8000		7000		6000	
5000		4000		2300		1760		1100 4000	
CATEGORY		A		B		C		D	
S-ILS 9L		868/18		200 (200-½)					
S-LOC 9L		1100/24		432 (500-½)		1100/40		432 (500-¾)	



EC-3, 23 JAN 2025 to 20 FEB 2025

EC-3, 23 JAN 2025 to 20 FEB 2025