

LOC/DME I-JAV <b>110.5</b>	APP CRS <b>093°</b>	Rwy Idg <b>11260</b> TDZE <b>668</b> Apt Elev <b>680</b>
Chan <b>42</b>		

# ILS or LOC RWY 9R

CHICAGO O'HARE INTL (ORD)

RNP APCH-GPS from GIBNS.

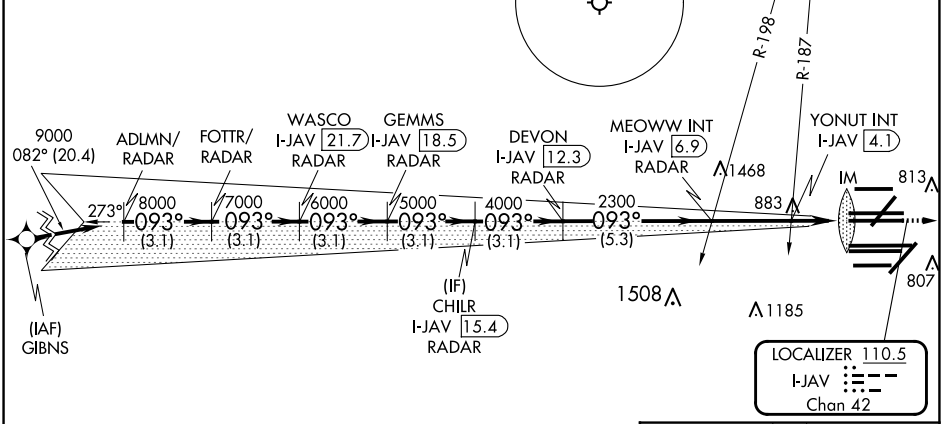
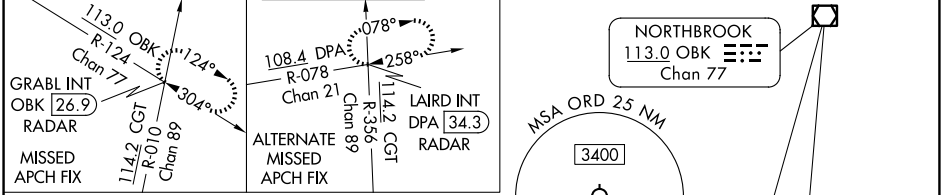
Aircraft not GPS equipped - RADAR required for procedure entry. RADAR or DME required.

Simultaneous approach authorized. For inop ALS, increase S-LOC 9R Cat C/D visibility to 2 SM.

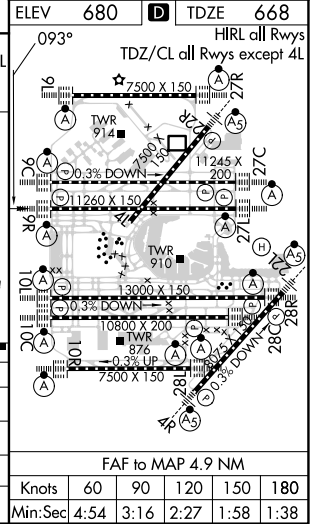
ALS-F-2

MISSED APPROACH: Climb to 1200 then climb to 4000 on heading 085° and OBK VOR/DME R-124 to GRABL INT/OKB 26.9 DME/RADAR and hold.

D-ATIS <b>135.4</b> <b>282.225</b>	CHICAGO APP CON <b>119.0 292.125</b>	O'HARE TOWER <b>126.9 348.0</b>	GND CON (TWR NORTH) <b>124.125</b> (TWR SOUTH) <b>118.05</b> (ALL TWRs) <b>226.675</b>	(TWR CENTER) <b>121.75</b> (OBND) <b>121.9</b> (IBND)	CLNC DEL <b>121.6</b>	CPDLC
--	---	------------------------------------	---	---	--------------------------	-------



VGSi and ILS glidepath not coincident (VGSi Angle 3.00/TCH 76).				
ADLMN/RADAR	WASCO I-JAV 21.7 RADAR	CHILR I-JAV 15.4 RADAR	MEOWW INT I-JAV 6.9 RADAR	YONUT INT I-JAV 4.1
FOTTR/RADAR	GEMMS I-JAV 18.5 RADAR	DEVON I-JAV 12.3 RADAR	I-JAV 3.1	I-JAV 2
9000	8000	7000	6000	5000
4000	2300	1380		
GS 3.00° TCH 58	3.1 NM	3.1 NM	3.1 NM	3.1 NM
			5.3 NM	2.8 NM
CATEGORY	A	B	C	D
S-ILS 9R	868/18		200 (200-½)	
S-LOC 9R	1380/24	712 (700-½)	1380-1½	712 (700-1½)
YONUT FIX MINIMUMS (DUAL VOR RECEIVERS OR DME REQUIRED)				
S-LOC 9R	1120/24	452 (500-½)	1120/45	452 (500-¾)



EC-3, 23 JAN 2025 to 20 FEB 2025

EC-3, 23 JAN 2025 to 20 FEB 2025