

# ILS PRM RWY 10C (CLOSE PARALLEL)

CHICAGO O'HARE INTL (ORD)

|  |                        |  |
|--|------------------------|--|
| LOC/DME I-SXH<br><b>108.95</b><br>Chan 26(Y) | APP CRS<br><b>093°</b> | Rwy Ldg <b>10540</b><br>TDZE <b>669</b><br>Apt Elev <b>680</b> |
|--|------------------------|--|

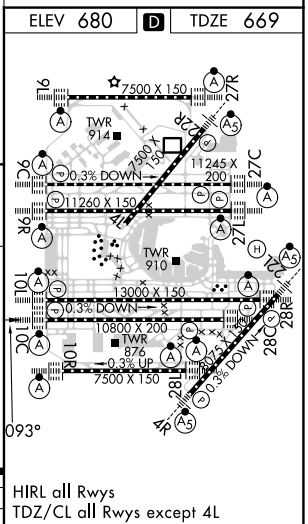
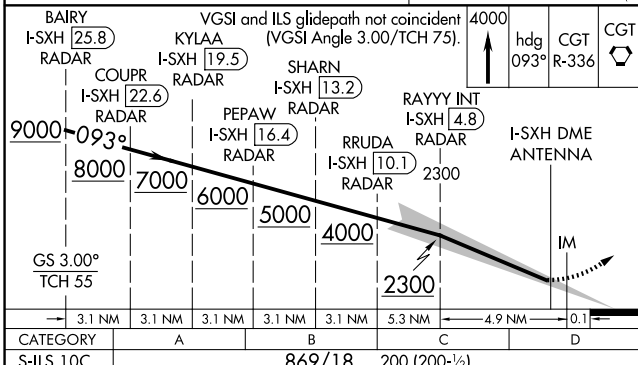
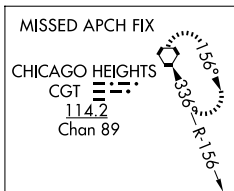
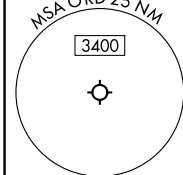
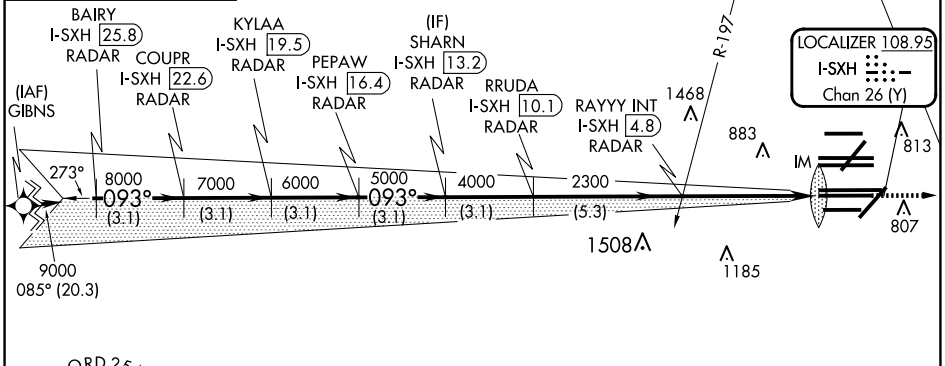
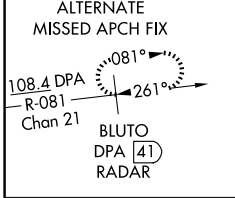
RNAV 1-GPS or RADAR required for procedure entry. DME or RADAR required.  
From GIBNS: RNAV-1 GPS required.

**Simultaneous approach authorized.**  
Use of FD or AP required during simultaneous operations.  
Dual VHF comm required. See additional requirements on AAUP.



**MISSED APPROACH:** Climb to 4000 on heading 093° and CGT VORTAC R-336 to CGT VORTAC and hold.

|  |   |   |  |   |                          |       |
|--|---|---|--|---|--------------------------|-------|
| D-ATIS<br><b>135.4</b><br><b>282.225</b> | CHICAGO APP CON<br><b>119.0 292.125</b> | O'HARE TOWER<br><b>120.75 348.0</b><br><b>PRM 119.625</b> | GND CON (TWR CENTER)<br><b>124.125</b> (TWR NORTH)<br><b>118.05</b> (TWR SOUTH)<br><b>226.675</b> (ALL TWRs) | <b>121.75</b> (OBND)<br><b>121.9</b> (IBND) | CLNC DEL<br><b>121.6</b> | CPDLC |
|--|---|---|--|---|--------------------------|-------|



EC-3, 23 JAN 2025 to 20 FEB 2025

EC-3, 23 JAN 2025 to 20 FEB 2025