

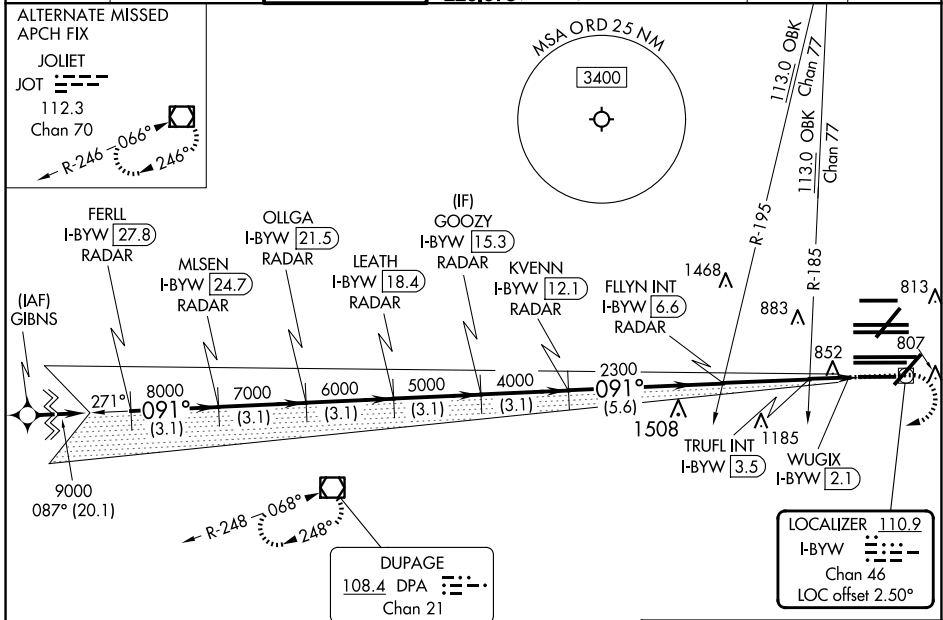
LOC/DME I-BYW <b>110.9</b> Chan <b>46</b>	APP CRS <b>091°</b>	Rwy Idg <b>7500</b> TDZE <b>680</b> Apt Elev <b>680</b>
---	------------------------	---

# ILS Y or LOC Y RWY 10R

CHICAGO O'HARE INTL (ORD)

RNAV 1-GPS or RADAR required for procedure entry. DME or RADAR required. From GIBNS: RNAV-1 GPS required.	ALSF-2 	MISSED APPROACH: Climb to 1200 then climbing right turn to 4000 direct DPA VOR/DME and hold.
Simultaneous approach authorized.		

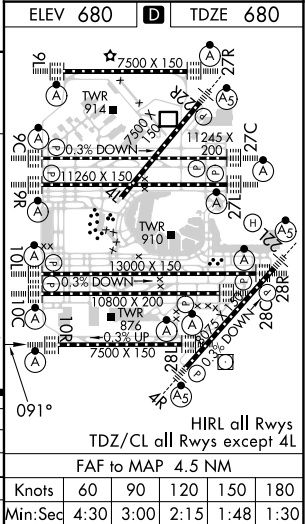
D-ATIS <b>135.4</b> <b>282.225</b>	CHICAGO APP CON <b>119.0 292.125</b>	O'HARE TOWER <b>133.0 348.0</b>	GND CON (TWR CENTER) <b>124.125</b> (TWR NORTH) <b>118.05</b> (TWR SOUTH) <b>226.675</b> (ALL TWRs)	(TWR CENTER) <b>121.75</b> (OBND) <b>121.9</b> (IBND)	CLNC DEL <b>121.6</b>	CPDLC
--	---	------------------------------------	--	---	--------------------------	-------



EC-3, 23 JAN 2025 to 20 FEB 2025

EC-3, 23 JAN 2025 to 20 FEB 2025

FERIL I-BYW 27.8 RADAR	OLLGA I-BYW 21.5 RADAR	GOOZY I-BYW 15.3 RADAR	FLYIN INT I-BYW 6.6 RADAR	*LOC only.		
MLSEN I-BYW 24.7 RADAR	LEATH I-BYW 18.4 RADAR	KVENN I-BYW 12.1 RADAR	TRUFL INT I-BYW 3.5 RADAR	WUGIX I-BYW 2.1 RADAR	2300	*1220
9000 091°				8000	7000	6000
GS 3.00° TCH 55				5000	4000	3000
3.1 NM				3.1 NM	3.1 NM	5.6 NM
CATEGORY A				CATEGORY B		CATEGORY C
S-ILS 10R				930/24		250 (300-½)
S-LOC 10R				1220/24		540 (600-½)
TRUFL FIX MINIMUMS (DUAL VOR RECEIVERS OR DME REQUIRED)				1220/55		540 (600-1)
S-LOC 10R				1120/24		440 (500-½)
S-LOC 10R				1120/40		440 (500-¾)



HIRL all Rws	60	90	120	150	180
TDZ/CL all Rws except 4L	4:30	3:00	2:15	1:48	1:30
FAF to MAP 4.5 NM					