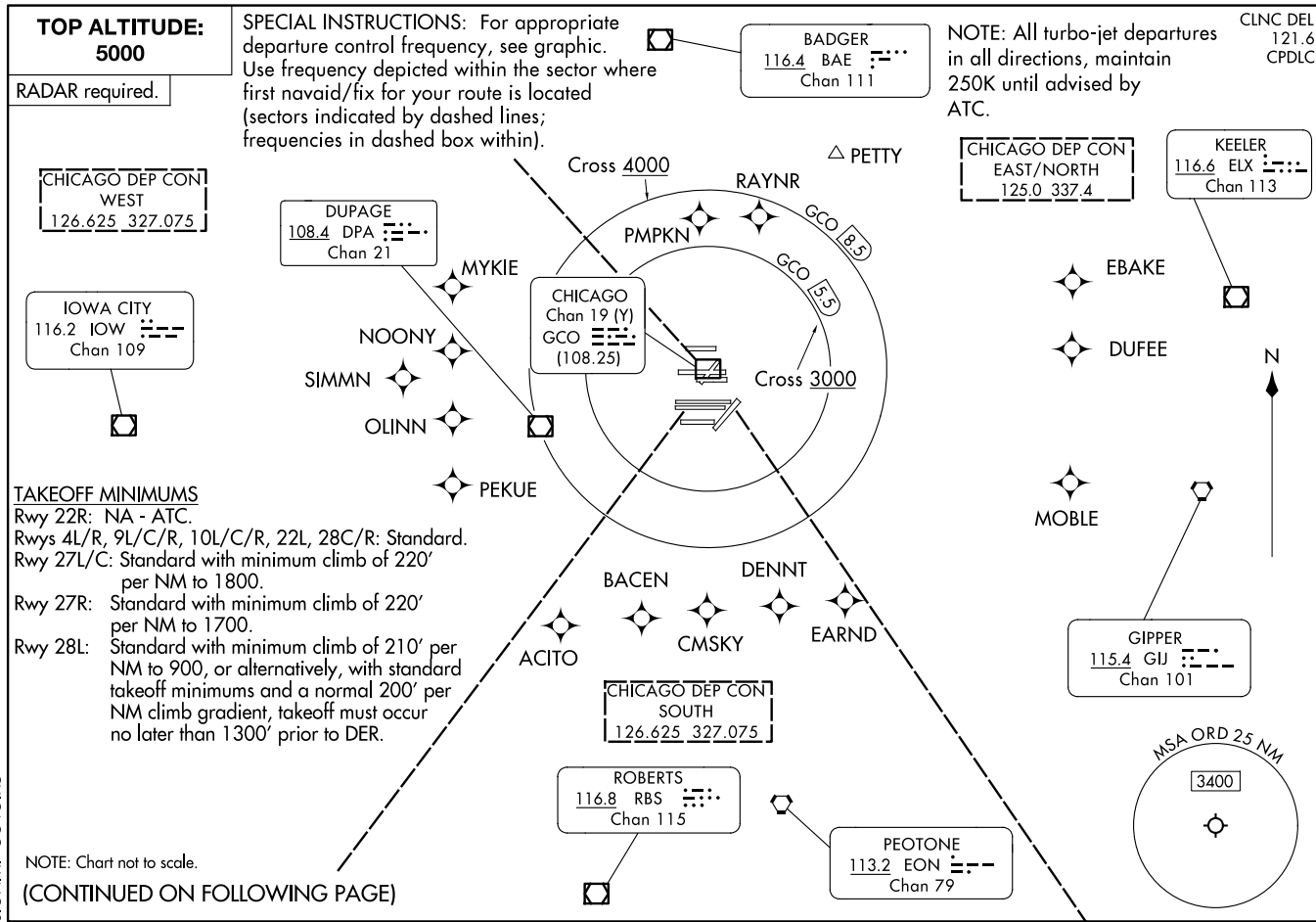


30NOV23

O'HARE EIGHT DEPARTURE

CHICAGO, ILLINOIS
CHICAGO O'HARE INTL (ORD)



24025

O'HARE EIGHT DEPARTURE

CHICAGO O'HARE INTL (ORD)
CHICAGO, ILLINOIS

AL-166 (FAA)

O'HARE EIGHT DEPARTURE



DEPARTURE ROUTE DESCRIPTION

ALL AIRCRAFT: Expect RADAR vectors to first enroute navaid/fix.
Expect clearance to requested altitude/flight level ten minutes after departure.

ALL AIRCRAFT: Cross 5.5 DME arc of GCO DME at or above 3000, cross
8.5 DME arc of GCO DME at or above 4000, maintain 5000 or assigned altitude.
If unable to comply advise ATC as soon as possible prior to departure.

EC-3, 23 JAN 2025 to 20 FEB 2025

EC-3, 23 JAN 2025 to 20 FEB 2025