

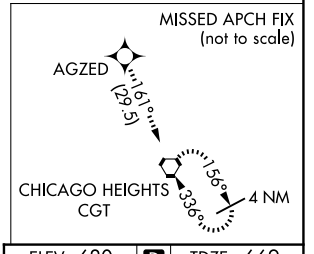
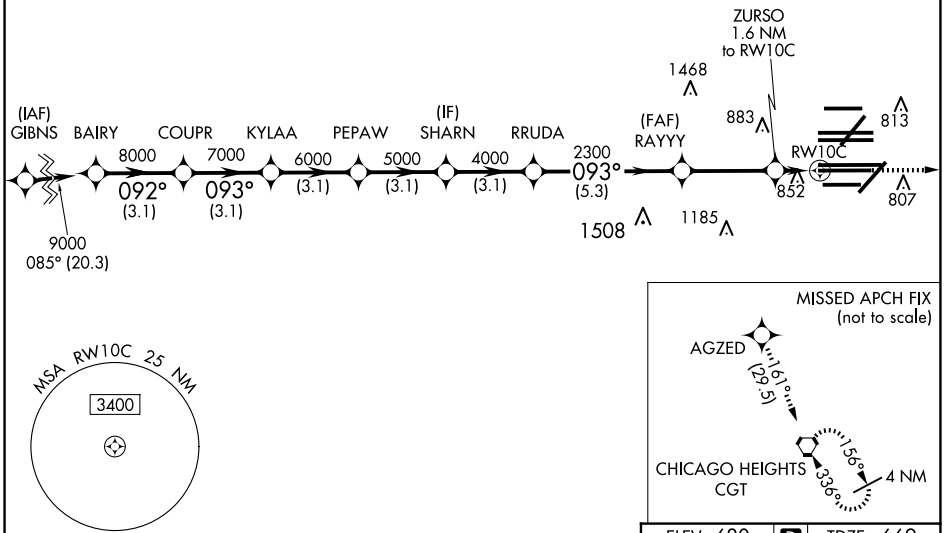
WAAS CH 81934 W10B	APP CRS 093°	Rwy Idg 10540 TDZE 669 Apt Elev 680
--	------------------------	--

RNAV (GPS) RWY 10C

CHICAGO O'HARE INTL (ORD)

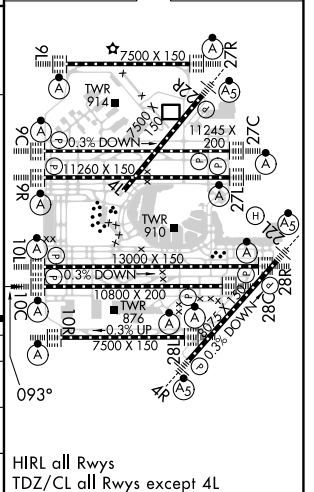
RNP APCH - GPS.		ALSIF-2		MISSED APPROACH: Climb to 4000 direct AGZED and on track 161° to CGT VORTAC and hold.	
<p>Simultaneous approach authorized. For uncompensated Baro-VNAV systems, LNAV/VNAV NA below -19°C or above 54°C. LNAV procedure NA during simultaneous operations. Use of FD or AP required during simultaneous operations. Rwy 10C helicopter visibility reduction below RVR 4000 NA.</p>		<p>(TWR CENTER) 121.75 (OBND) 121.9 (IBND)</p>		<p>CLNC DEL 121.6</p>	
D-ATIS 135.4 282.225	CHICAGO APP CON 119.0 292.125	O'HARE TOWER 120.75 348.0	GND CON 124.125 (TWR NORTH) 118.05 (TWR SOUTH) 226.675 (ALL TWRs)	CPDLC	

RADAR REQUIRED



ELEV 680	D	TDZE 669
----------	----------	----------

VGSI and RNAV glidepath not coincident (VGSI Angle 3.00/TCH 75).		4000	AGZED	tr 161°	CGT			
BAIRY	COUPR	KYLAA	PEPAW	SHARN	RRUDA	RAYYY	ZURSO	RWY10C
9000	8000	7000	6000	5000	4000	2300	1220	
GP 3.00° TCH 55								
	3.1 NM	3.1 NM	3.1 NM	3.1 NM	3.1 NM	5.3 NM	3.4 NM	1.6 NM
CATEGORY	A		B		C		D	
LPV DA			869/18		200 (200-½)			
LNAV/VNAV DA			1062/40		393 (400-¾)			
LNAV MDA	1120/24		451 (500-½)		1120/45		451 (500-¾)	



EC-3, 23 JAN 2025 to 20 FEB 2025

EC-3, 23 JAN 2025 to 20 FEB 2025