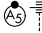


WAAS CH 90504 W22A	APP CRS 223°	Rwy Idg 7300 TDZE 652 Apt Elev 680
--	------------------------	---

RNAV (GPS) RWY 22R

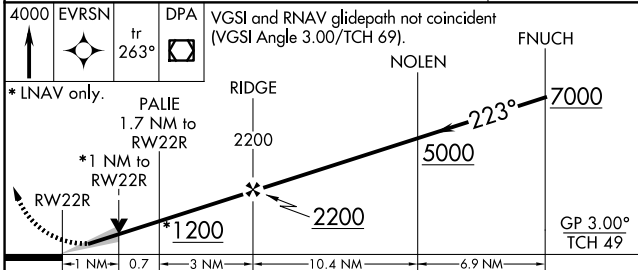
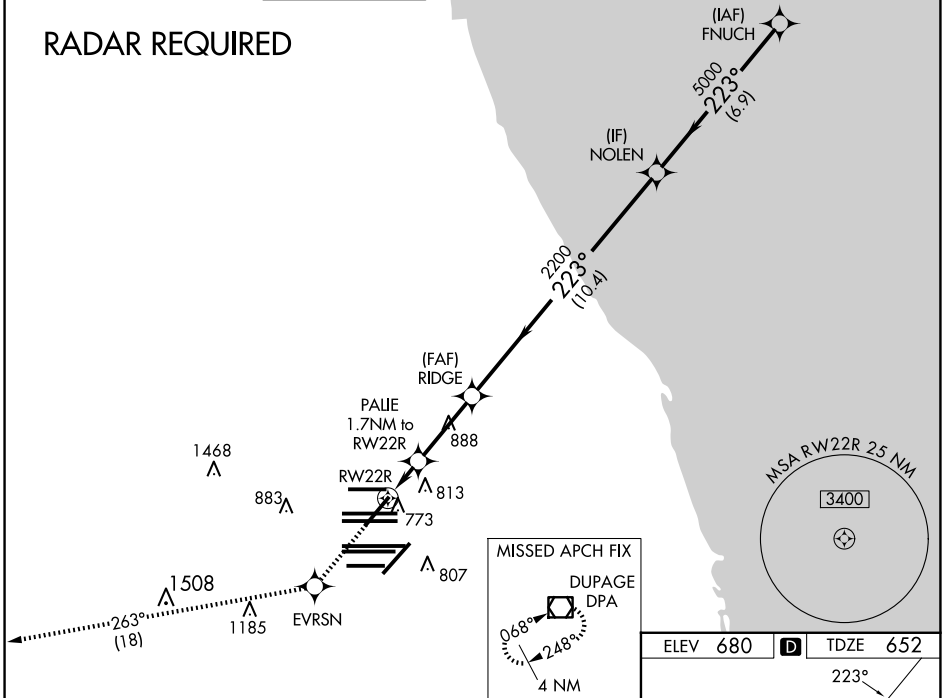
CHICAGO O'HARE INTL (ORD)

⚠ For uncompensated Baro-VNAV systems, LNAV/VNAV NA below -22°C (-7°F) or above 39°C (102°F). Simultaneous approach authorized with Rwy 22L. DME/DME RNP-0.3 NA. LNAV procedure NA during simultaneous operations. Use of FD or AP providing RNAV track guidance required during simultaneous operations.

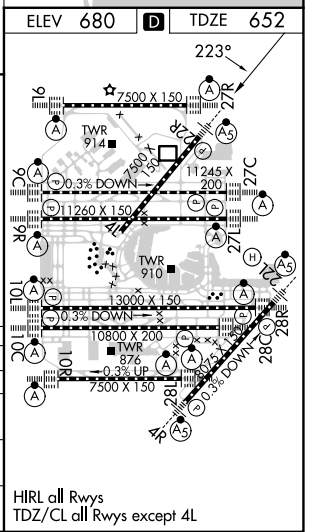
MALSR 

MISSED APPROACH: Climb to 4000 direct EVRSN and on track 263° to DPA VOR/DME and hold.

D-ATIS 135.4 282.225	CHICAGO APP CON 119.0 292.125	O'HARE TOWER 126.9 348.0	GND CON (TWR CENTER) 124.125 (TWR NORTH) 118.05 (TWR SOUTH) 226.675 (ALL TWRs)	(TWR CENTER) 121.75 (OBND) 121.9 (IBND)	CLNC DEL 121.6	CPDLC
--	---	------------------------------------	--	---	--------------------------	-------



4000 EVRSN	tr 263°	DPA	VGSi and RNAV glidepath not coincident (VGSi Angle 3.00/TCH 69).			
* LNAV only.	PALIE 1.7 NM to RW22R	RIDGE	NOLEN	FNUCH		
	*1 NM to RW22R	2200	5000	7000		
CATEGORY	A	B	C	D		
LPV DA		852/18	200 (200-½)			
LNAV/VNAV DA		972/32	320 (300-¾)			
LNAV MDA	1040/24	388 (400-½)	1040/35	388 (400-¾)		
C CIRCLING	1220-1	540 (600-1)	1220-1½	1460-2½		
			540 (600-1½)	780 (800-2½)		



EC-3, 23 JAN 2025 to 20 FEB 2025

EC-3, 23 JAN 2025 to 20 FEB 2025