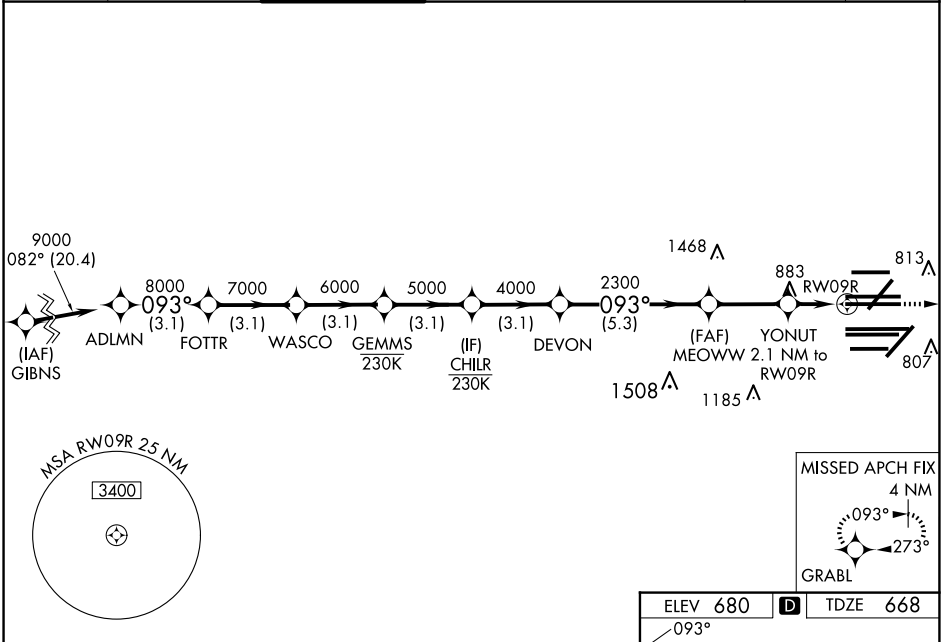


WAAS CH <b>78204</b> <b>W09A</b>	APP CRS <b>093°</b>	Rwy ldg <b>11260</b> TDZE <b>668</b> Apt Elev <b>680</b>
--	------------------------	--

# RNAV (GPS) RWY 9R

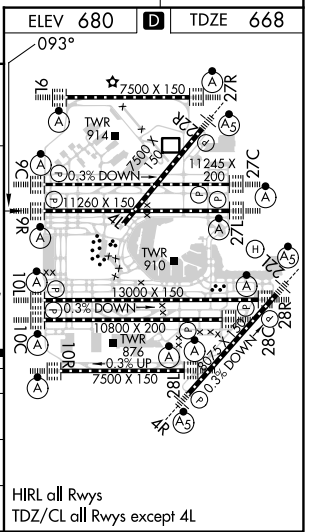
CHICAGO O'HARE INTL (ORD)

RNP APCH - GPS.		Simultaneous approach authorized. LNAV procedure NA during simultaneous operations. Use of FD or AP required during simultaneous operations. For uncompensated Baro-VNAV systems, LNAV/VNAV NA below -19°C or above 54°C. For inop ALS, increase LNAV/VNAV all Cats visibility to RVR 4500. For inop ALS, increase LNAV Cats C/D visibility to 1 3/8 SM.		MISSED APPROACH: Climb to 4000 direct GRABL and hold.	
D-ATIS <b>135.4</b> <b>282.225</b>	CHICAGO APP CON <b>119.0 292.125</b>	O'HARE TOWER <b>126.9 348.0</b>	GND CON <b>124.125</b> (TWR NORTH) <b>118.05</b> (TWR SOUTH) <b>226.675</b> (ALL TWRs)	(TWR CENTER) <b>121.75</b> (OBND) <b>121.9</b> (IBND)	CLNC DEL <b>121.6</b>
			CPDLC		



VGSI and RNAV glidepath not coincident (VGSI Angle 3.00/TCH 76).

	ADLMN	FOTTR	WASCO	GEMMS	CHILR	DEVON	MEOWW	YONUT	RWY09R
Altitude	9000	8000	7000	6000	5000	4000	2300	1380	1380
Distance	3.1 NM	3.1 NM	3.1 NM	3.1 NM	3.1 NM	5.3 NM	2.8 NM	0.9 NM	1.2 NM
Category	A		B		C		D		
LPV DA			868/18		200 (200-1/2)				
LNAV/VNAV DA			976/24		308 (300-1/2)				
LNAV MDA	1140/24		472 (500-1/2)		1140/50		472 (500-1)		



EC-3, 23 JAN 2025 to 20 FEB 2025

EC-3, 23 JAN 2025 to 20 FEB 2025