

CHICAGO, ILLINOIS

AL-166 (FAA)

# RNAV (GPS) PRM RWY 10C (CLOSE PARALLEL)

CHICAGO O'HARE INTL (ORD)

WAAS CH <b>81934</b> <b>W10B</b>	APP CRS <b>093°</b>	Rwy Idg <b>10540</b> TDZE <b>669</b> Apt Elev <b>680</b>
--	------------------------	--

RNP APCH - GPS.

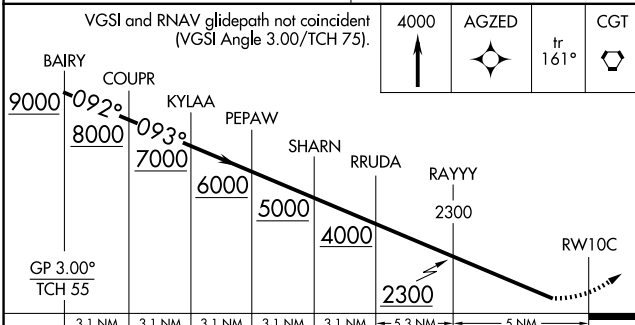
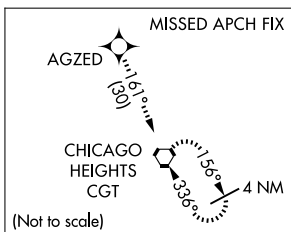
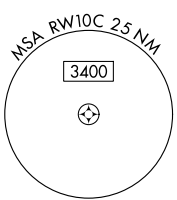
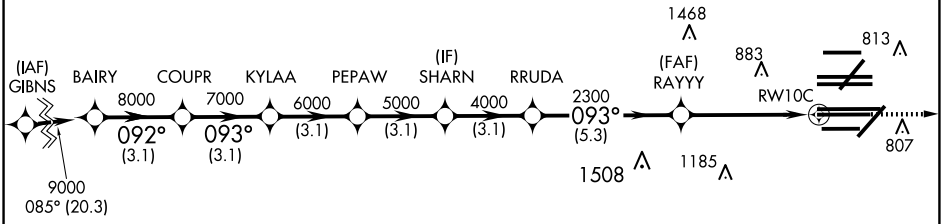
Simultaneous approach authorized. Dual VHF comm required. See additional requirements on AAUP. For uncompensated Baro-VNAV systems, LNAV/VNAV NA below -19°C or above 54°C. Rwy 10C helicopter visibility reduction below RVR 4000 NA. Use of FD or AP required during simultaneous operations.

ALSIF-2

MISSED APPROACH: Climb to 4000 direct AGZED and on track 161° to CGT VORTAC and hold.

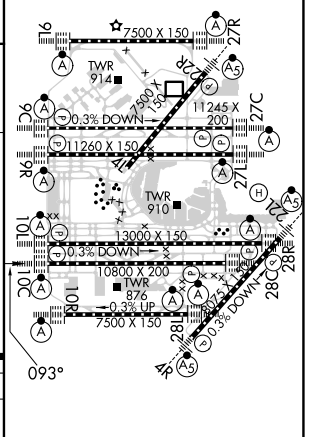
D-ATIS <b>135.4</b> <b>282.225</b>	CHICAGO APP CON <b>119.0 292.125</b>	O'HARE TOWER <b>120.75 348.0</b> <b>PRM 119.625</b>	GND CON (TWR CENTER) <b>124.125</b> (TWR NORTH) <b>118.05</b> (TWR SOUTH) <b>226.675</b> (ALL TWRs)	(TWR CENTER) <b>121.75</b> (OBND) <b>121.9</b> (IBND)	CLNC DEL <b>121.6</b>	CPDLC
--	---	---	--	---	--------------------------	-------

## RADAR REQUIRED



CATEGORY	A	B	C	D
LPV DA		869/18	200 (200-1/2)	
LNAV/VNAV DA		1062/40	393 (400-3/4)	

ELEV 680 **D** TDZE 669



HIRL all Rwy's  
TDZ/CL all Rwy's except 4L

CHICAGO, ILLINOIS  
Orig-B 25JAN24

41°59'N-87°54'W

CHICAGO O'HARE INTL (ORD)

# RNAV (GPS) PRM RWY 10C (CLOSE PARALLEL)

EC-3, 23 JAN 2025 to 20 FEB 2025

EC-3, 23 JAN 2025 to 20 FEB 2025