

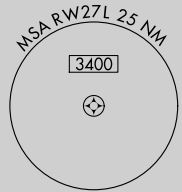
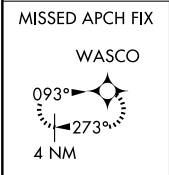
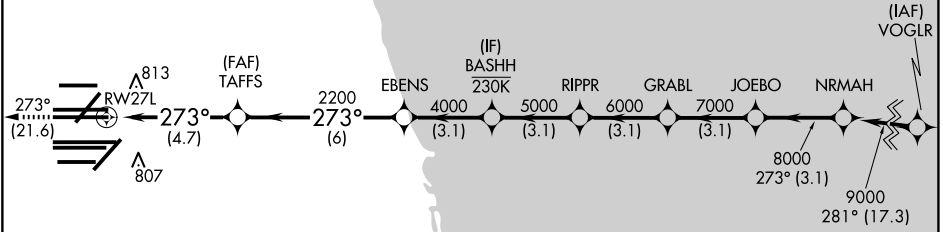
APP CRS	Rwy Idg	11260
273°	TDZE	654
	Apt Elev	680

RNAV (RNP) Y RWY 27L

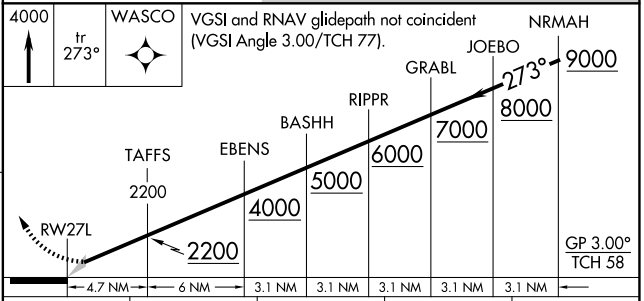
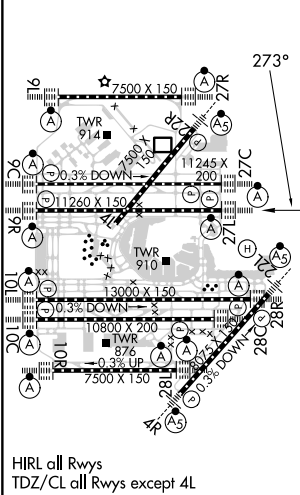
CHICAGO O'HARE INTL (ORD)

RNP AR APCH - GPS.				MISSED APPROACH: Climb to 4000 on track 273° to WASCO and hold.		
Simultaneous approach authorized. Use of FD or AP required during simultaneous operations. For uncompensated Baro-VNAV systems, procedure NA below -19°C or above 54°C.						
D-ATIS	CHICAGO APP CON	O'HARE TOWER	GND CON (TWR NORTH)	(TWR CENTER) (TWR SOUTH)	CLNC DEL	CPDLC
135.4	119.0 292.125	126.9 348.0	124.125	118.05	121.6	
282.225			226.675	121.9		
			(ALL TWRs)			

RADAR REQUIRED



ELEV	680	D	TDZE	654
------	------------	----------	------	------------



CATEGORY	A	B	C	D
RNP 0.15 DA		989/26	335 (400-½)	
RNP 0.30 DA		1133/50	479 (500-1)	

AUTHORIZATION REQUIRED

EC-3, 23 JAN 2025 to 20 FEB 2025

EC-3, 23 JAN 2025 to 20 FEB 2025