

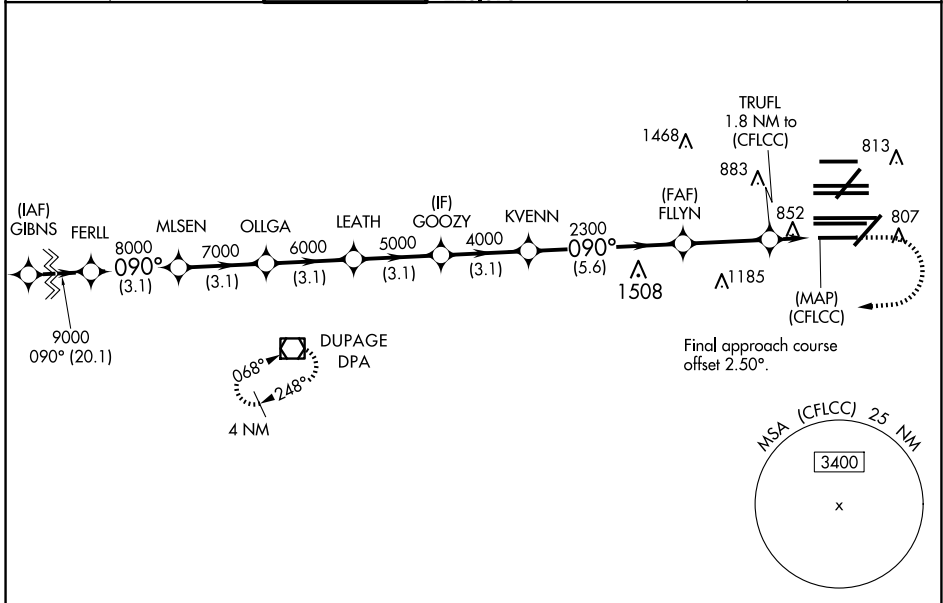
WAAS CH 77937 W10D	APP CRS 090°	Rwy Idg TDZE Apt Elev	7500 680 680
--	------------------------	-----------------------------	---

RNAV (GPS) Y RWY 10R

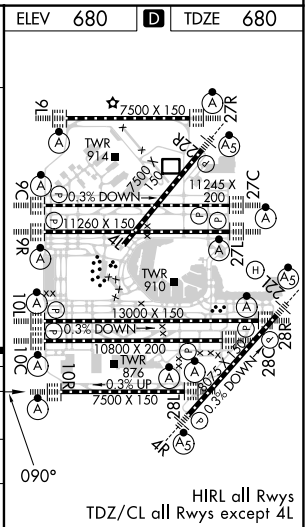
CHICAGO O'HARE INTL (ORD)

RNP APCH	<p>Simultaneous approach authorized. For uncompensated Baro-VNAV systems, LNAV/VNAV NA below -19°C or above 54°C. LNAV procedure NA during simultaneous operations. Use of FD or AP providing RNAV track guidance required during simultaneous operations. For inop ALS, increase LNAV/VNAV all Cats visibility to 1/2 SM.</p>	ALS-F-2 	MISSED APPROACH: Climb to 1200 then climbing right turn to 4000 direct DPA VOR/DME and hold.
----------	--	-------------	--

D-ATIS 135.4 282.225	CHICAGO APP CON 119.0 292.125	O'HARE TOWER 133.0 348.0	GND CON 124.125 (TWR NORTH) 118.05 (TWR SOUTH) 226.675 (ALL TWRs)	(TWR CENTER) 121.75 (OBND) 121.9 (IBND)	CLNC DEL 121.6	CPDLC
--	---	------------------------------------	---	---	--------------------------	-------



	ELEV 680	TDZE 680
	1200	4000
		DPA
		*LNAV only.
GP 3.00 TCH 55	9000	8000
	7000	6000
	5000	4000
	2300	1300
	3.1 NM	3.1 NM
	3.1 NM	3.1 NM
	3.1 NM	3.1 NM
	3.1 NM	5.6 NM
	3.1 NM	0.6 NM
		1.2 NM
CATEGORY	A	B
LPV DA		930/24
LNAV/VNAV DA		1157/50
LNAV MDA	1120/24	440 (500-1/2)
		250 (300-1/2)
		477 (500-1)
		1120/40
		440 (500-3/4)



EC-3, 23 JAN 2025 to 20 FEB 2025

EC-3, 23 JAN 2025 to 20 FEB 2025