

# SHAIN TWO ARRIVAL(RNAV) Transition Routes

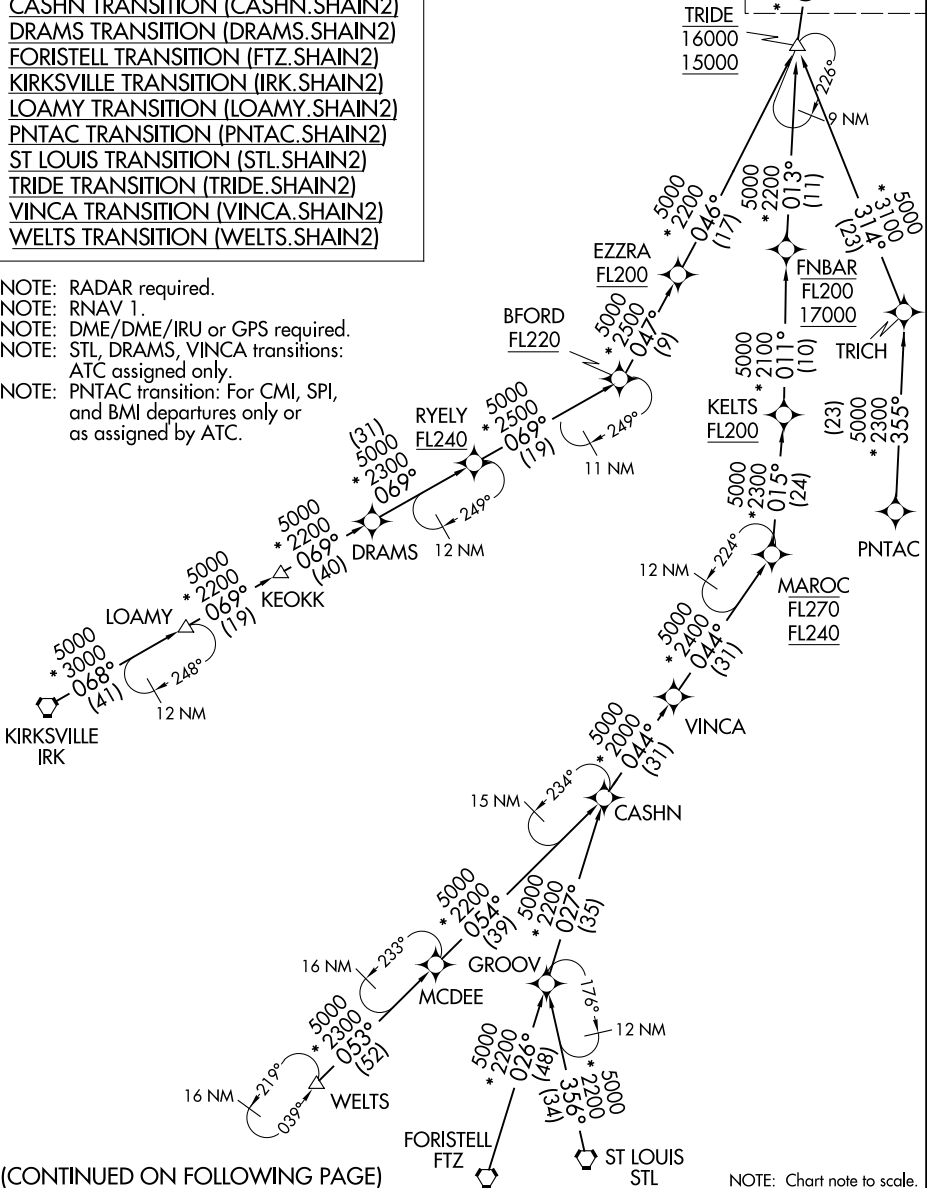
CHICAGO APP CON  
119.0 292.125  
D-ATIS  
135.4 282.225

See following page for  
Arrival Routes

SHAIN  
12000

- BFORD TRANSITION (BFORD.SHAIN2)
- CASHN TRANSITION (CASHN.SHAIN2)
- DRAMS TRANSITION (DRAMS.SHAIN2)
- FORISTELL TRANSITION (FTZ.SHAIN2)
- KIRKSVILLE TRANSITION (IRK.SHAIN2)
- LOAMY TRANSITION (LOAMY.SHAIN2)
- PNTAC TRANSITION (PNTAC.SHAIN2)
- ST LOUIS TRANSITION (STL.SHAIN2)
- TRIDE TRANSITION (TRIDE.SHAIN2)
- VINCA TRANSITION (VINCA.SHAIN2)
- WELTS TRANSITION (WELTS.SHAIN2)

- NOTE: RADAR required.  
NOTE: RNAV 1.  
NOTE: DME/DME/IRU or GPS required.  
NOTE: STL, DRAMS, VINCA transitions:  
ATC assigned only.  
NOTE: PNTAC transition: For CMI, SPI,  
and BMI departures only or  
as assigned by ATC.



(CONTINUED ON FOLLOWING PAGE)

NOTE: Chart note to scale.

# SHAIN TWO ARRIVAL(RNAV) Transition Routes

EC-3, 23 JAN 2025 to 20 FEB 2025

EC-3, 23 JAN 2025 to 20 FEB 2025

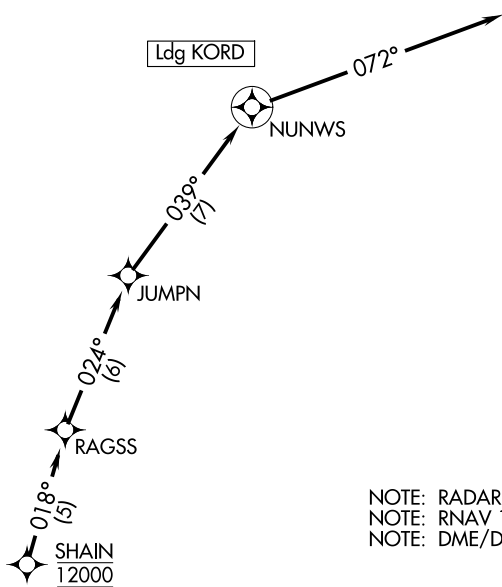
(SHAIN.SHAIN2) 20310

AL-166

CHICAGO O'HARE INTL (ORD)  
CHICAGO, ILLINOIS

# SHAIN TWO ARRIVAL(RNAV) Arrival Routes

CHICAGO APP CON  
119.0 292.125  
D-ATIS  
135.4 282.225



NOTE: RADAR required.  
NOTE: RNAV 1.  
NOTE: DME/DME/IRU or GPS required.

NOTE: Chart note to scale.

## ARRIVAL ROUTE DESCRIPTION

From SHAIN on track 018° to RAGSS, then on track 024° to JUMPN, then on track 039° to NUNWS, then on track 072°. Expect RADAR vectors to final approach course.

SHAIN TWO ARRIVAL(RNAV) Arrival Routes  
(SHAIN.SHAIN2) 05NOV20

CHICAGO, ILLINOIS  
CHICAGO O'HARE INTL (ORD)

EC-3, 23 JAN 2025 to 20 FEB 2025

EC-3, 23 JAN 2025 to 20 FEB 2025