

APP CRS	Rwy Idg	10502
212°	TDZE	3669
	Apt Elev	3680

RNAV (RNP) Z RWY 21

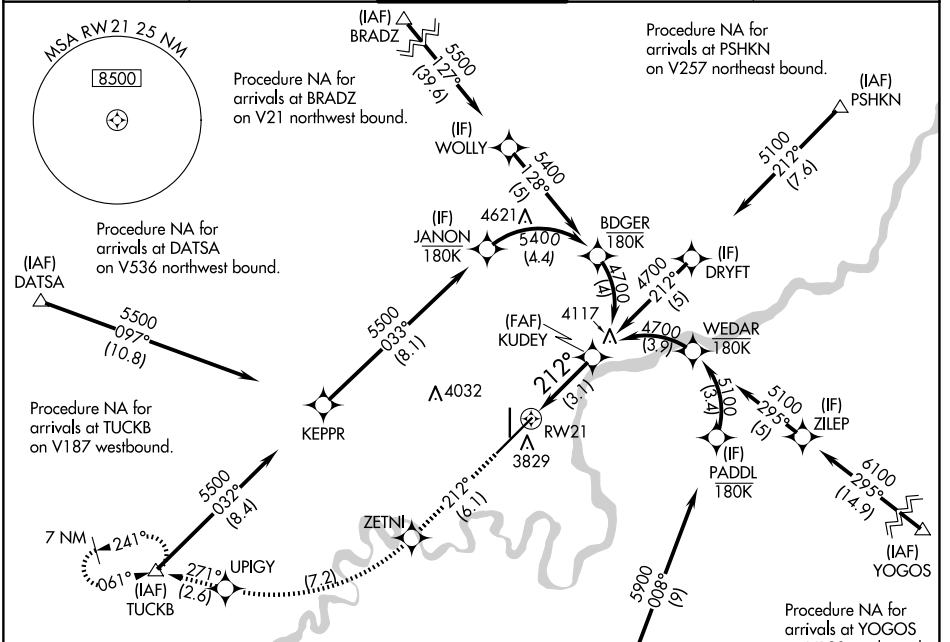
GREAT FALLS INTL (GTF')

RNP AR APCH - GPS.

For uncompensated Baro-VNAV systems, procedure NA below -24°C or above 54°C.

MISSED APPROACH: Climb to 8000 on track 212° to ZETNI, right turn to UPIGY and on track 271° to TUCKB and hold, continue climb-in-hold to 8000.

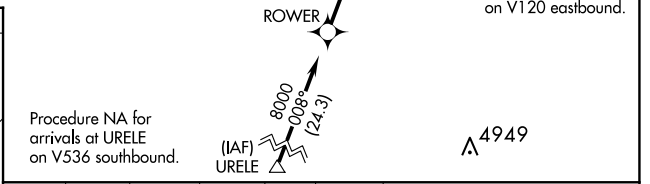
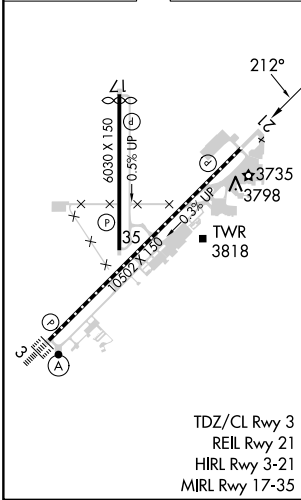
ATIS 126.6 269.0	GREAT FALLS APP CON 128.6 379.175	GREAT FALLS TOWER 118.7 282.2	GND CON 121.7 348.6	CLNC DEL 121.7 348.6
----------------------------	---------------------------------------------	-----------------------------------------	-------------------------------	--------------------------------



NW-1, 23 JAN 2025 to 20 FEB 2025

NW-1, 23 JAN 2025 to 20 FEB 2025

ELEV 3680	D	TDZE 3669
-----------	----------	-----------



8000	ZETNI	UPIGY	TUCKB	KUDEY
tr 212°	☉	☉	△	4700
VGSI and RNAV glidepath not coincident (VGSI Angle 3.00/TCH 75).				
RW21				4700
See planview for multiple IF locations.				GP 3.00° TCH 59
3.1 NM				

CATEGORY	A	B	C	D
RNP 0.10 DA	3942/45 273 (300-7%)			
RNP 0.30 DA	3992/50 323 (400-1)			

AUTHORIZATION REQUIRED