

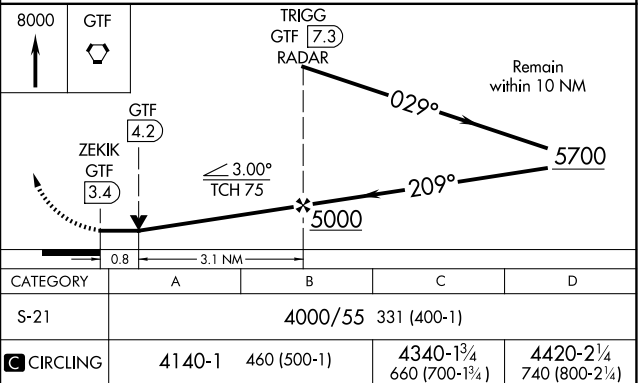
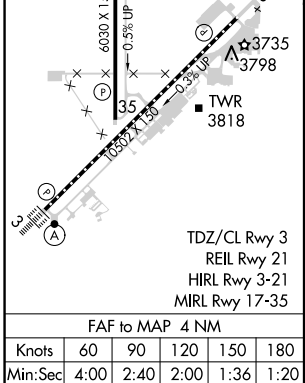
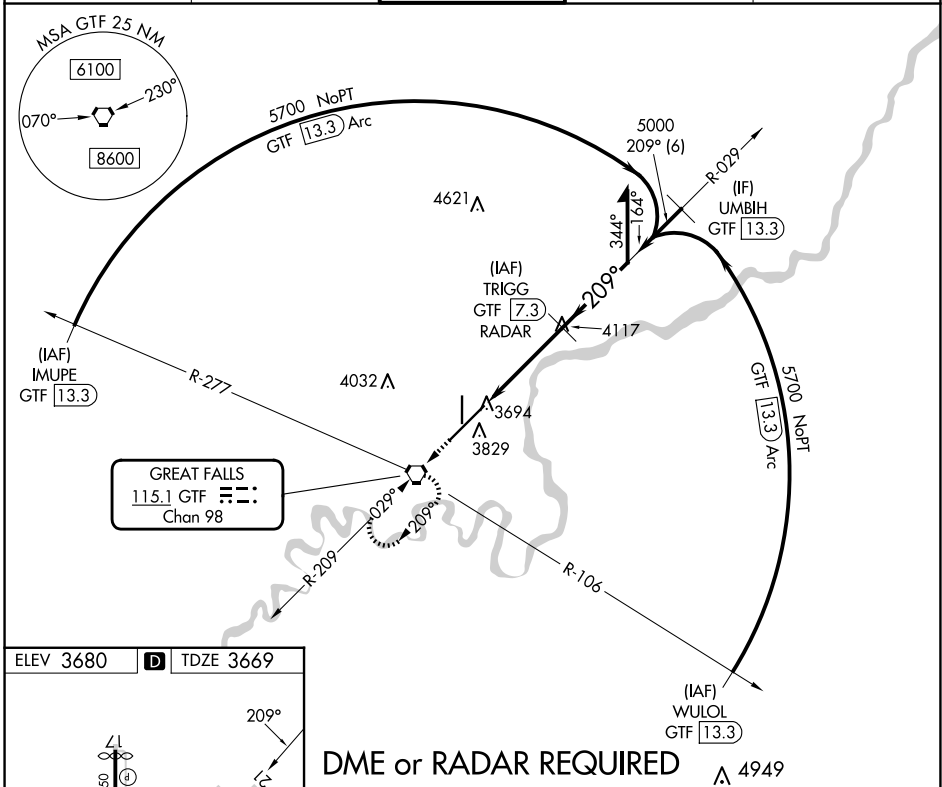
VORTAC GTF <b>115.1</b> Chan <b>98</b>	APP CRS <b>209°</b>	Rwy Idg <b>10502</b> TDZE <b>3669</b> Apt Elev <b>3680</b>
--	------------------------	--

# VOR RWY 21

GREAT FALLS INTL (GTF)

DME or RADAR required.		MISSED APPROACH: Climb to 8000 direct GTF VORTAC and hold, continue climb-in-hold to 8000.		
------------------------	--	--	--	--

ATIS <b>126.6 269.0</b>	GREAT FALLS APP CON <b>128.6 379.175</b>	GREAT FALLS TOWER <b>118.7 282.2</b>	GND CON <b>121.7 348.6</b>	CLNC DEL <b>121.7 348.6</b>
----------------------------	---	---	-------------------------------	--------------------------------



NW-1, 23 JAN 2025 to 20 FEB 2025

NW-1, 23 JAN 2025 to 20 FEB 2025