

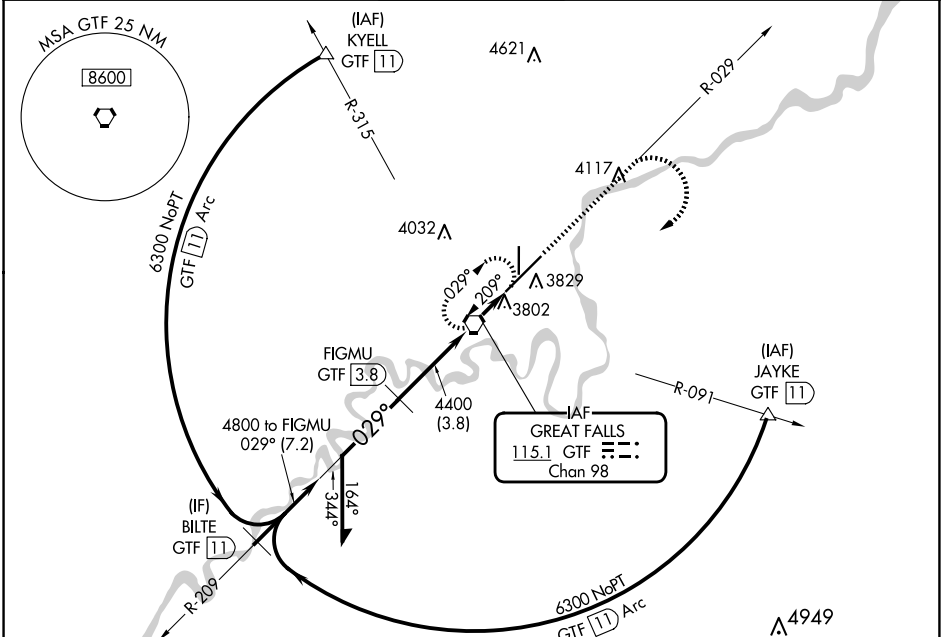
VORTAC GTF	APP CRS	Rwy Idg	10502
115.1	029°	TDZE	3680
Chan 98		Apt Elev	3680

VOR RWY 3

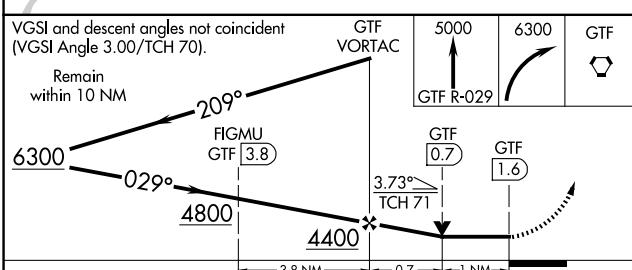
GREAT FALLS INTL (GTF)

DME required.		ALSIF-2	MISSED APPROACH: Climb to 5000 on GTF VORTAC R-029 then climbing right turn to 6300 direct GTF VORTAC and hold, continue climb-in-hold to 6300.	
▼ For inoperative ALS, increase Cat C visibility to RVR 5500.				

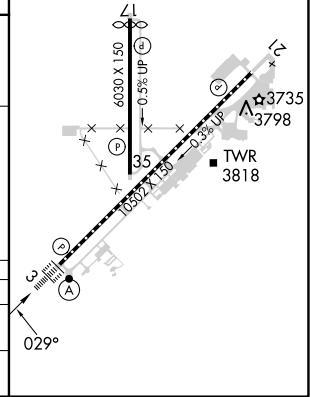
ATIS	GREAT FALLS APP CON	GREAT FALLS TOWER	GND CON	CLNC DEL
126.6 269.0	128.6 379.175	118.7 282.2	121.7 348.6	121.7 348.6



ELEV 3680	TDZE 3680
TDZ/CL Rwy 3 REIL Rwy 21 MIRL Rwy 17-35 HIRL Rwy 3-21	



CATEGORY	A	B	C	D
S-3	4060/24 380 (400-½)			NA
CIRCLING	4140-1	460 (500-1)	4320-1¾ 640 (700-1¾)	NA



NW-1, 23 JAN 2025 to 20 FEB 2025

NW-1, 23 JAN 2025 to 20 FEB 2025