

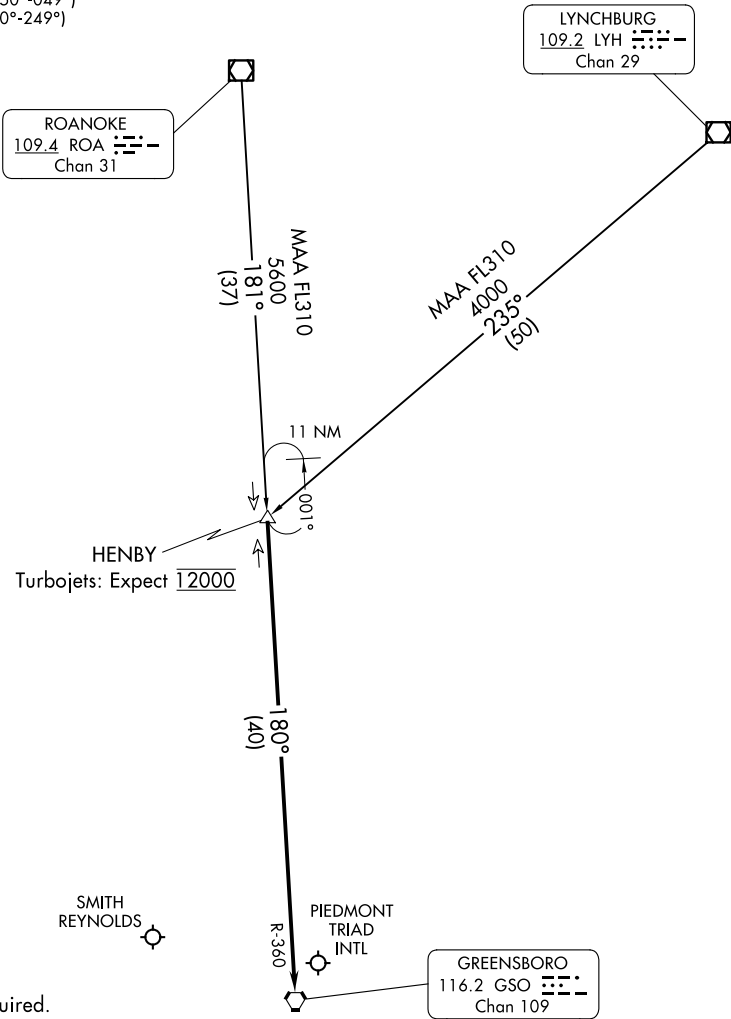
(HENBY.HENBY3) 24081

AL-178 (FAA)

# HENBY THREE ARRIVAL

GREENSBORO, NORTH CAROLINA

GREENSBORO APP CON  
 124.35 269.225 (250°-049°)  
 126.6 327.075 (050°-249°)  
 GSO D-ATIS  
 128.55  
 INT ATIS  
 121.3



HENBY  
 Turbojets: Expect 12000

LYNCHBURG  
 109.2 LYH  
 Chan 29

ROANOKE  
 109.4 ROA  
 Chan 31

GREENSBORO  
 116.2 GSO  
 Chan 109

NOTE: DME required.

NOTE: Chart not to scale.

## ARRIVAL ROUTE DESCRIPTION

LYNCHBURG TRANSITION (LYH.HENBY3): From over LYH VOR/DME on LYH R-235 to HENBY INT. Thence. . .

ROANOKE TRANSITION (ROA.HENBY3): From over ROA VOR/DME on ROA R-181 to HENBY INT. Thence. . .

. . . from over HENBY on GSO R-360 to GSO VORTAC, thence. . . expect RADAR vectors to final approach course.

# HENBY THREE ARRIVAL

GREENSBORO, NORTH CAROLINA

(HENBY.HENBY3) 03JAN19

SE-2, 23 JAN 2025 to 20 FEB 2025

SE-2, 23 JAN 2025 to 20 FEB 2025