

WAAS CH 86515 W05B	APP CRS 054°	Rwy Idg 9000 TDZE 916 Apt Elev 926
--	------------------------	---

RNAV (GPS) RWY 5L

PIEDMONT TRIAD INTL (GSO)

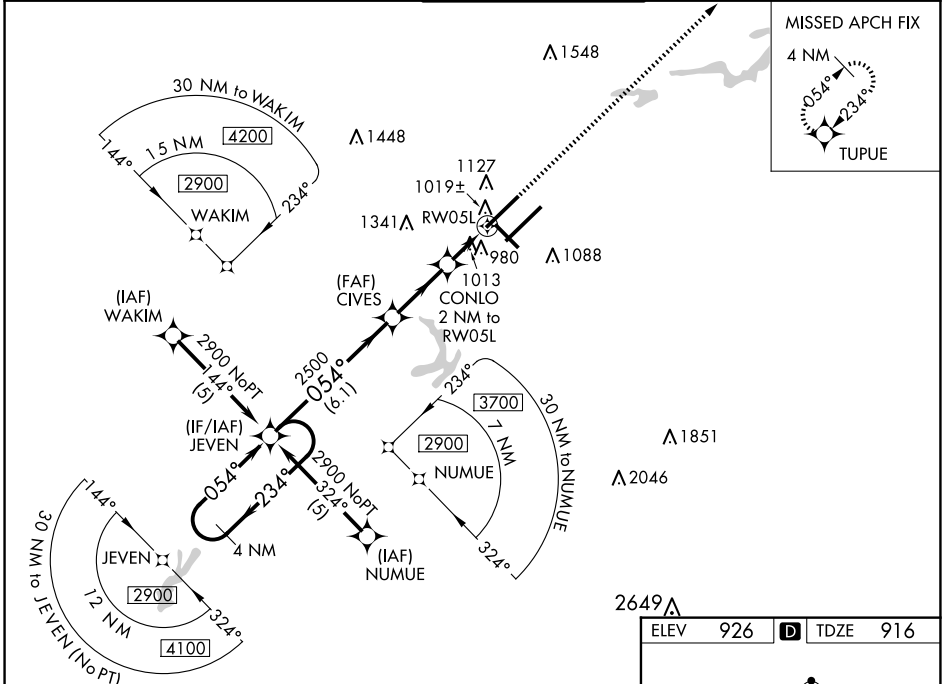
RNP APCH - GPS.

For inop ALS, increase LNAV Cat D visibility to RVR 6000. For uncompensated Baro-VNAV systems, LNAV/VNAV NA below -1.6°C or above 47°C. Simultaneous approach authorized with ILS or LOC Rwy 5R, ILS Rwy 5R (CAT II). Use of FD or AP required during simultaneous operations. LNAV procedure NA during simultaneous operations.



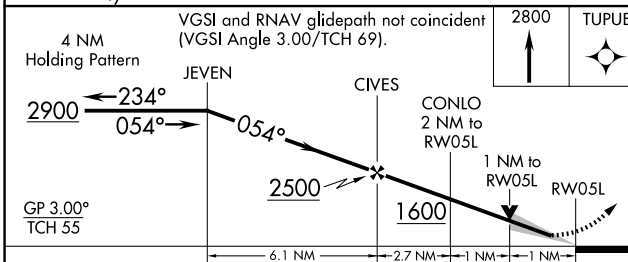
MISSED APPROACH:
Climb to 2800 direct TUPUE and hold.

D-ATIS 128.55	GREENSBORO APP CON 124.35 269.225 (250°-049°) 126.6 327.075 (050°-249°)	GREENSBORO TOWER 119.1 290.325	GND CON 121.9 348.6	CLNC DEL 121.75
-------------------------	---	--	-------------------------------	---------------------------

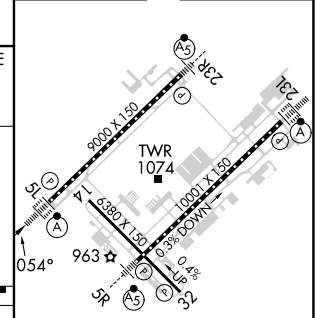


SE-2, 23 JAN 2025 to 20 FEB 2025

SE-2, 23 JAN 2025 to 20 FEB 2025



ELEV 926	TDZE 916
----------	----------



CATEGORY	A	B	C	D
LPV DA	1116/18		200 (200-½)	
LNAV/VNAV DA	1367/50		451 (500-1)	
LNAV MDA	1300/24	384 (400-½)	1300/35 384 (400-¾)	1300/50 384 (400-1)
CIRCLING	1440-1	514 (600-1)	1700-2¼ 774 (800-2¼)	1700-2½ 774 (800-2½)

TDZ/CL Rwy 5L, 23R and 23L
REIL Rwy 32
HIRL Rwy 14-32, 5R-23L and 5L-23R