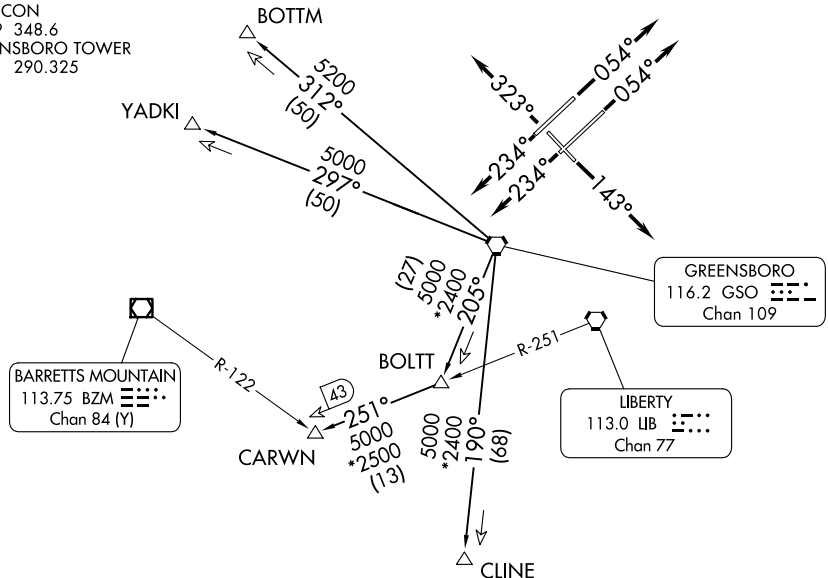


TRIAD NINE DEPARTURE

GREENSBORO DEP CON
124.35 269.225 (250°-049°)
126.6 327.075 (050°-249°)
D-ATIS 128.55
CLNC DEL 121.75
GND CON
121.9 348.6
GREENSBORO TOWER
119.1 290.325

**TOP ALTITUDE:
ASSIGNED BY ATC**



TAKEOFF MINIMUMS
Rwys 5L/R, 14, 23L/R, 32: Standard.

NOTE: RADAR and DME required.

NOTE: Chart not to scale.

DEPARTURE ROUTE DESCRIPTION

- TAKEOFF RWYS 5L/R: Climb heading 054°, thence. . . .
- TAKEOFF RWY 14: Climb heading 143°, thence. . . .
- TAKEOFF RWYS 23L/R: Climb heading 234°, thence. . . .
- TAKEOFF RWY 32: Climb heading 323°, thence. . . .

. . . maintain altitude assigned by ATC. Expect vector to intercept assigned radial associated with the issued transition. Proceed via the depicted radial to the transition fix, thence as filed. If no transition assigned, expect vector to the appropriate fix. Expect requested altitude/flight level ten (10) minutes after departure.

- BOTTOM TRANSITION (TRI9.BOTTOM): Expect vector to intercept GSO R-312 to BOTTOM.
- CARWN TRANSITION (TRI9.CARWN): Expect vector to intercept GSO R-205 to BOLT, then on LIB R-251 to CARWN.
- CLINE TRANSITION (TRI9.CLINE): Expect vector to intercept GSO R-190 to CLINE.
- YADKI TRANSITION (TRI9.YADKI): Expect vector to intercept GSO R-297 to YADKI.

SE-2, 23 JAN 2025 to 20 FEB 2025

SE-2, 23 JAN 2025 to 20 FEB 2025