

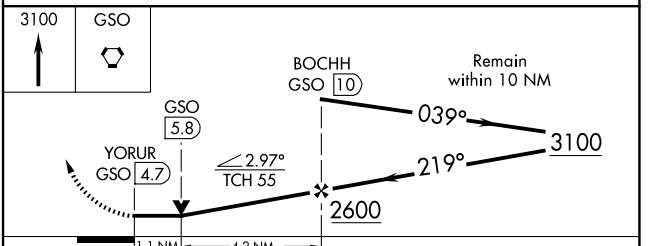
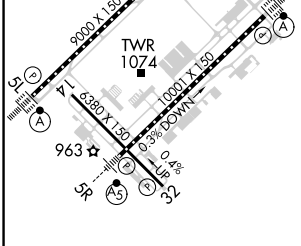
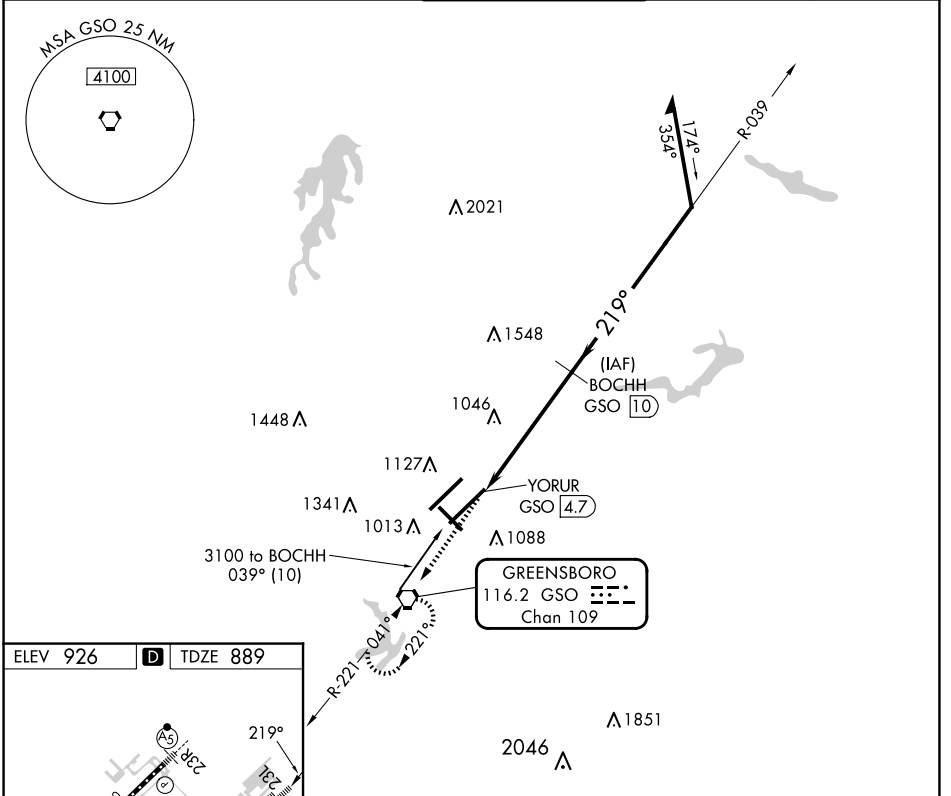
VORTAC GSO 116.2 Chan 109	APP CRS 219°	Rwy Idg 9601 TDZE 889 Apt Elev 926
---	------------------------	---

VOR/DME RWY 23L

PIEDMONT TRIAD INTL (GSO)

	For inop ALS, increase S-23L Cat D visibility to RVR 6000.		MISSED APPROACH: Climb to 3100 direct GSO VORTAC and hold, continue climb-in-hold to 3100.

D-ATIS 128.55	GREENSBORO APP CON 124.35 269.225 (250°-049°) 126.6 327.075 (050°-249°)	GREENSBORO TOWER 119.1 290.325	GND CON 121.9 348.6	CLNC DEL 121.75
-------------------------	---	--	-------------------------------	---------------------------



CATEGORY	A	B	C	D
S-23L	1300/24	411 (400-½)	1300/40 411 (400-¾) 411 (400-1)	1300/50 411 (400-1)
CIRCLING	1440-1	514 (600-1)	1700-2¼ 774 (800-2¼)	1700-2½ 774 (800-2½)

SE-2, 23 JAN 2025 to 20 FEB 2025

SE-2, 23 JAN 2025 to 20 FEB 2025