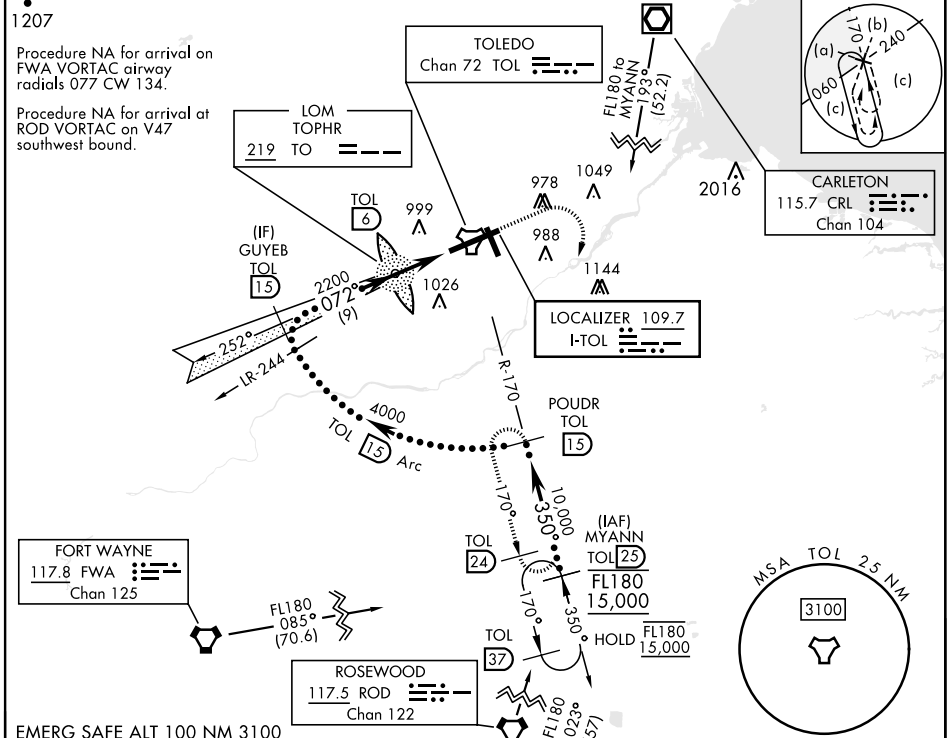


HI-ILS Y or LOC Y RWY 7

LOC I-TOL 109.7	APCH CRS 072°	Rwy ldg 10,599 TDZE 683 Arpt Elev 684	[USAF]	EUGENE F KRANZ TOLEDO EXPRESS (KTOL)
---------------------------	-------------------------	--	--------	--------------------------------------

DME required	ALSF-2	MISSED APPROACH: Climb to 2500, then climbing right turn to 3000 on TOL TACAN R-170 to POUDR/15 DME and hold.
<p>*When ALS inop, increase CAT E RVR to 40, vis to 3/4 mile.</p> <p>**When ALS inop, increase CAT E RVR to 60, vis to 1 1/4 miles.</p>		

ATIS 118.75 290.225	TOLEDO APP CON 126.1 317.55	TOLEDO TOWER 118.1 285.4	GND CON 121.9 348.6	CLNC DEL 121.75 348.6	ASR
-------------------------------	---------------------------------------	------------------------------------	-------------------------------	---------------------------------	-----



EMERG SAFE ALT 100 NM 3100			ELEV 684	TDZE 683
<p>GS 3.00° TCH 59</p> <p>4000 → 2200 → 2162 → 203 → 1300-134</p>			POUDR TOL 15	726 ± A
CATEGORY	C	D	E	775 ± A
S-ILS 7 *	886/18	203 (300-1/2)		
S-LOC 7 **	1140/45	457 (500-7/8)		
CIRCLING	1300-134 616 (700-13/4)	1400-214 716 (800-21/4)	1400-212 716 (800-21/2)	
			HIRL Rwy 7-25 MIRL Rwy 16-34 REIL Rwy 16, 34 TDZL/CL Rwy 7	Rwy 7 ldg 10,599' Rwy 25 ldg 10,599'

HI-ILS Y or LOC Y RWY 7

EC-2, 23 JAN 2025 to 20 FEB 2025

EC-2, 23 JAN 2025 to 20 FEB 2025