

HI-TACAN RWY 7

TACAN TOL Chan 72	APCH CRS 068°	Rwy ldg 10,599 TDZE 683 Arpt Elev 684
-----------------------------	-------------------------	--

[USAF]

EUGENE F KRANZ TOLEDO EXPRESS (KTOL)

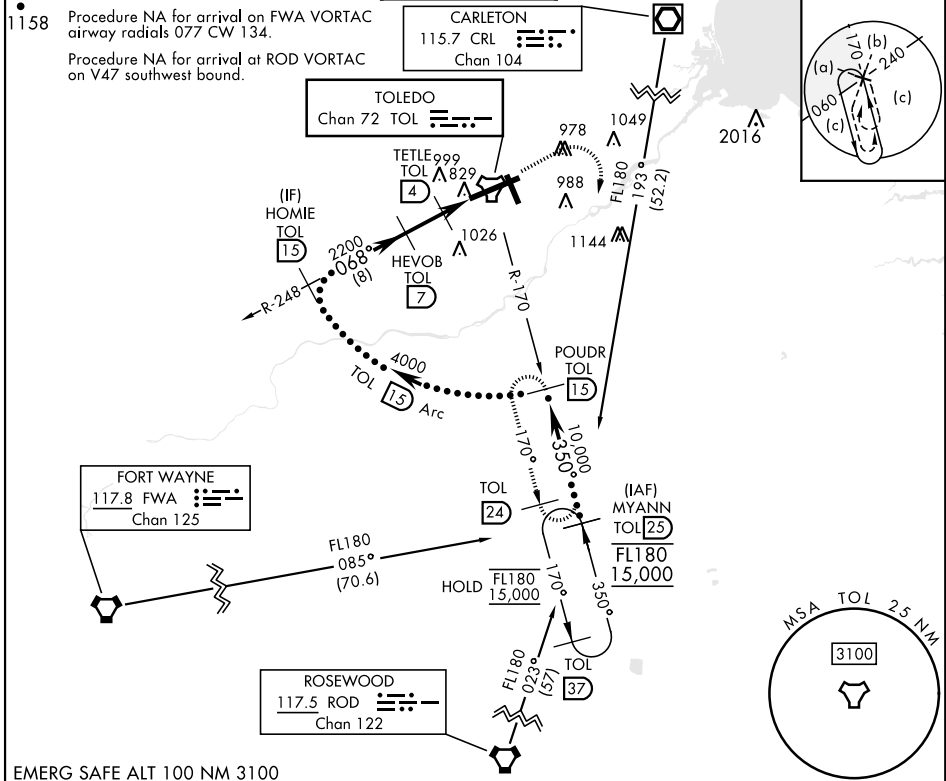
V * When ALS inop, increase CAT E vis to 1 $\frac{1}{2}$ mile.



MISSED APPROACH: Climb to 3000 then right turn on TOL TACAN R-170 to POWDR/15 DME and hold.

ATIS 118.75 290.225	TOLEDO APP CON 126.1 317.55	TOLEDO TOWER 118.1 285.4	GND CON 121.9 348.6	CLNC DEL 121.75 348.6	ASR
-------------------------------	---------------------------------------	------------------------------------	-------------------------------	---------------------------------	-----

1158 Procedure NA for arrival on FWA VORTAC airway radials 077 CW 134.
Procedure NA for arrival at ROD VORTAC on V47 southwest bound.



EC-2, 23 JAN 2025 to 20 FEB 2025

EC-2, 23 JAN 2025 to 20 FEB 2025

EMERG SAFE ALT 100 NM 3100

	<p>3000</p> <p>TOL R-170</p>	<p>POWDR TOL 15</p>	<p>ELEV 684</p> <p>TDZE 683</p>												
<p>HOMIE TOL 15</p> <p>HEVOB TOL 7</p> <p>TETLE TOL 4</p> <p>TOL 2.9</p> <p>TOL 1.3</p> <p>TOL TACAN</p>	<p>794 TWR 750 91</p> <p>769 ±</p> <p>726 ±</p> <p>775 ±</p>	<p>794 TWR 750 91</p> <p>599.150</p> <p>34</p> <p>10,600 x 150</p>	<p>MSA TOL 2.5 NM</p> <p>3100</p>												
<table border="1"> <thead> <tr> <th>CATEGORY</th> <th>C</th> <th>D</th> <th>E</th> </tr> </thead> <tbody> <tr> <td>S-7 *</td> <td>1140/45</td> <td>457 (500-7%)</td> <td></td> </tr> <tr> <td>CIRCLING</td> <td>1360-2 676 (700-2)</td> <td>1400-2 1/4 716 (800-2 1/4)</td> <td>1400-2 1/2 716 (800-2 1/2)</td> </tr> </tbody> </table>	CATEGORY	C	D	E	S-7 *	1140/45	457 (500-7%)		CIRCLING	1360-2 676 (700-2)	1400-2 1/4 716 (800-2 1/4)	1400-2 1/2 716 (800-2 1/2)	<p>HIRL Rwy 7-25</p> <p>MIRL Rwy 16-34</p> <p>REIL Rwy 16, 34</p> <p>TDZL/CL Rwy 7</p>	<p>Rwy 7 ldg 10,599'</p> <p>Rwy 25 ldg 10,599'</p>	
CATEGORY	C	D	E												
S-7 *	1140/45	457 (500-7%)													
CIRCLING	1360-2 676 (700-2)	1400-2 1/4 716 (800-2 1/4)	1400-2 1/2 716 (800-2 1/2)												

HI-TACAN RWY 7