

LOC I-MDT <b>110.9</b>	APP CRS <b>128°</b>	Rwy Idg <b>8070</b>
		TDZE <b>308</b>
		Apt Elev <b>310</b>

# ILS RWY 13 (SA CAT I)

HARRISBURG INTL (MDT)

**ALSF-2**  
Requires specific OPSPEC, MSPEC, or LOA approval.

**MISSED APPROACH:** Climb to 900 then climbing left turn to 3000 on heading 070° and on ETX VOR/DME R-253 to KUPPS INT/ETX 39.3 DME and hold.

**ATIS**  
**118.8**

**ALTERNATE MISSED APCH FIX**  
HARRISBURG HAR  
115.35  
Chan 100 (Y)

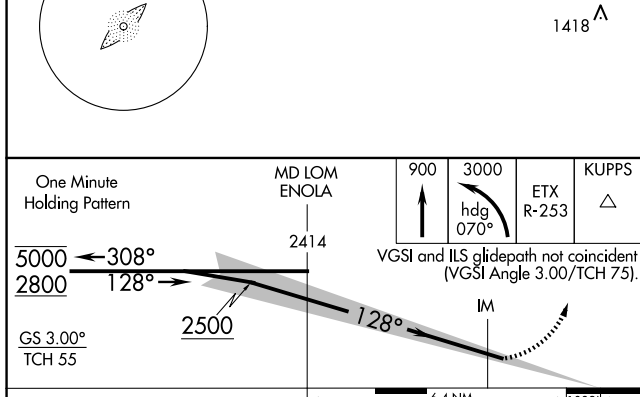
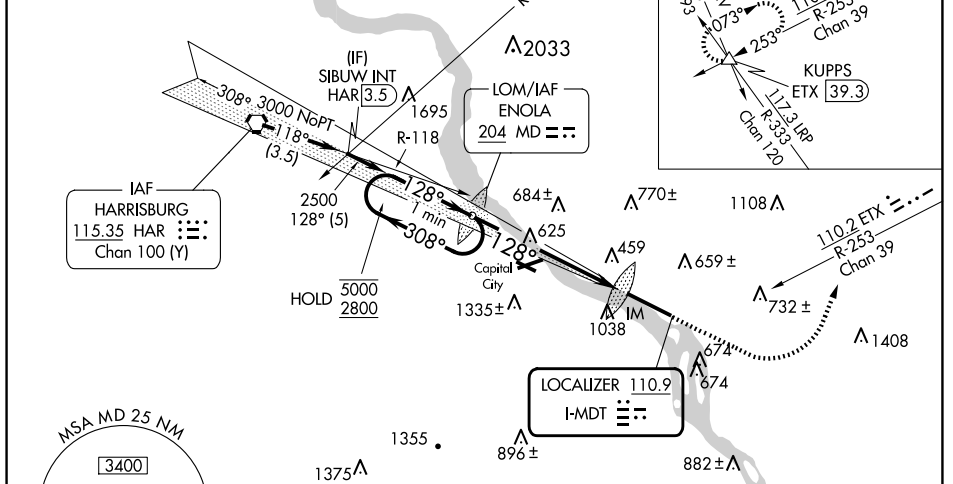
**HARRISBURG APP CON**

(080°-179°)	<b>126.45</b>	<b>281.525</b>
(180°-329°)	<b>124.1</b>	<b>273.525</b>
(330°-079°)	<b>118.25</b>	<b>269.45</b>

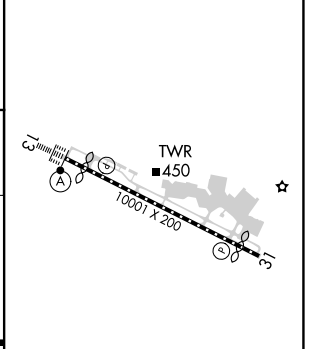
**HARRISBURG INTL TOWER**  
**124.8 269.35**

**GND CON**  
**121.7 348.6**

Procedure NA for arrival on HAR VORTAC airway radials 102 CW 157 and at HAR VORTAC on V12 eastbound.



ELEV 310 **D** TDZE 308



CATEGORY	A	B	C	D
S-ILS 13	RA 150/14 150 DA 458			

**SA CATEGORY I ILS - SPECIAL AIRCREW & AIRCRAFT CERTIFICATION REQUIRED**

TDZ/CL Rwy 13  
REIL Rwy 31  
HIRL Rwy 13-31

NE-4, 23 JAN 2025 to 20 FEB 2025

NE-4, 23 JAN 2025 to 20 FEB 2025