

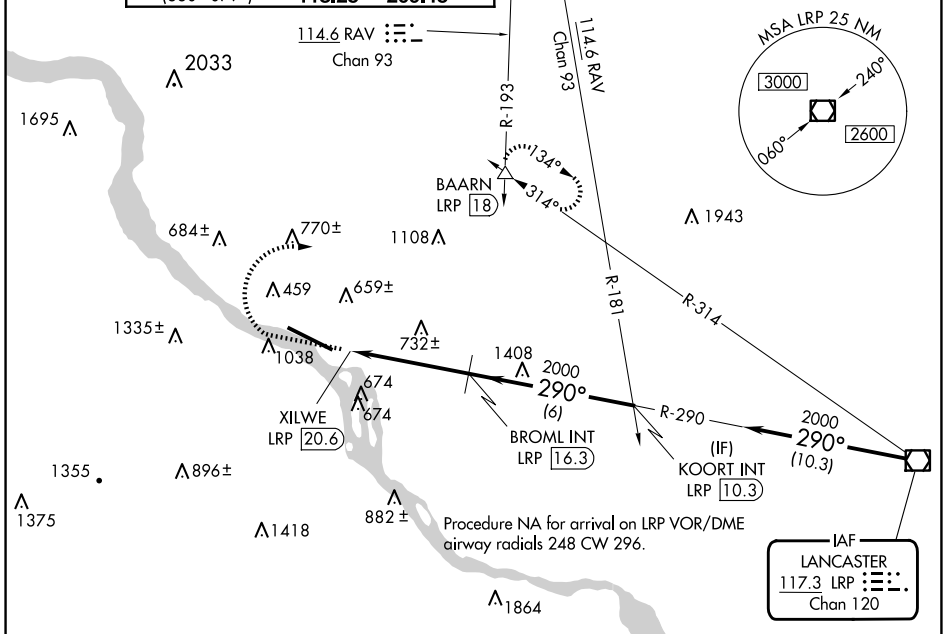
VOR/DME LRP <b>117.3</b> Chan <b>120</b>	APP CRS <b>290°</b>	Rwy Idg TDZE <b>308</b> Apt Elev <b>310</b>
--	------------------------	---

# VOR RWY 31

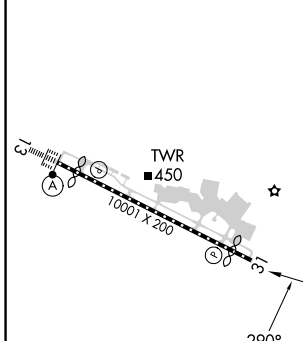
HARRISBURG INTL (MDT)

**V** Circling NA south of Rwy 13-31. Rwy 31 helicopter visibility reduction below 3/4 SM NA.  
**A** -17°C  
**M** MISSED APPROACH: Climb to 1500 then climbing right turn to 3000 on heading 090° and RAV VORTAC R-193 to BAARN INT/LRP 18 DME and hold.

ATIS <b>118.8</b>	HARRISBURG APP CON (080°-179°) <b>126.45 281.525</b> (180°-329°) <b>124.1 273.525</b> (330°-079°) <b>118.25 269.45</b>	HARRISBURG INTL TOWER <b>124.8 269.35</b>	GND CON <b>121.7 348.6</b>
----------------------	---	--	-------------------------------



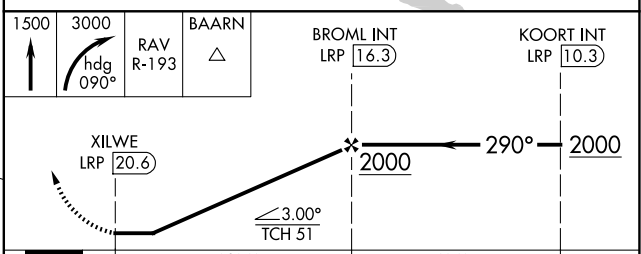
ELEV 310	<b>D</b>	TDZE 308
----------	----------	----------



TDZ/CL Rwy 13  
REL Rwy 31  
HIRL Rwy 13-31

FAF to MAP 4.3 NM

Knots	60	90	120	150	180
Min:Sec	4:18	2:52	2:09	1:43	1:26



CATEGORY	A	B	C	D
S-31	1260-1 1/4 952 (1000-1 1/4)	1260-1 1/2 952 (1000-1 1/2)	1260-3	952 (1000-3)
CIRCLING	1260-1 1/4 950 (1000-1 1/4)	1260-1 1/2 950 (1000-1 1/2)	1260-3 950 (1000-3)	1440-3 1130 (1200-3)

# VOR RWY 31

NE-4, 23 JAN 2025 to 20 FEB 2025

NE-4, 23 JAN 2025 to 20 FEB 2025