

APP CRS <b>091°</b>	Rwy Idg TDZE Apt Elev	<b>9000</b> <b>3864</b> <b>3877</b>
------------------------	-----------------------------	---

# RNAV (RNP) Z RWY 9

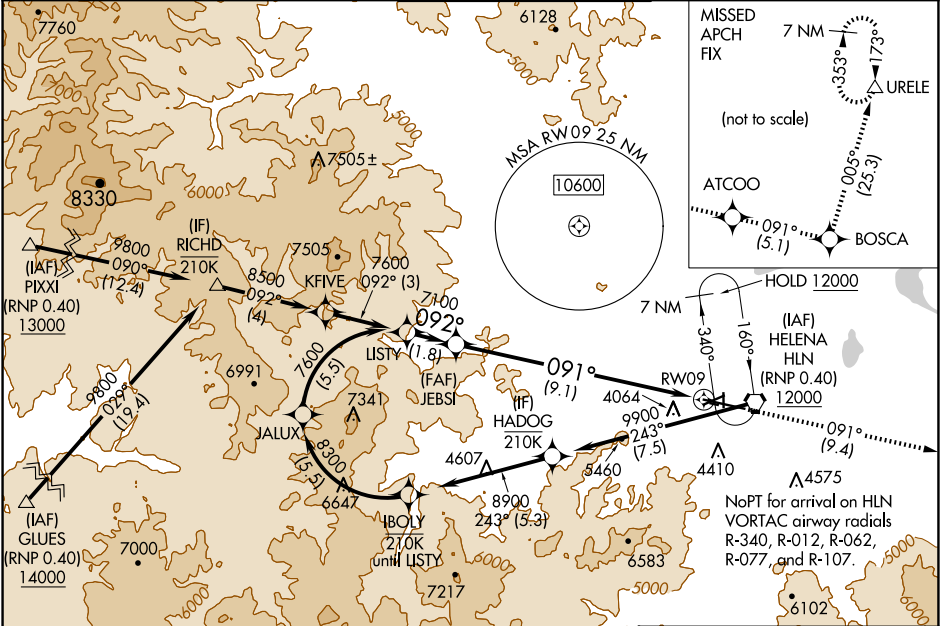
HELENA RGNL (HLN)

RNP AR APCH - GPS.

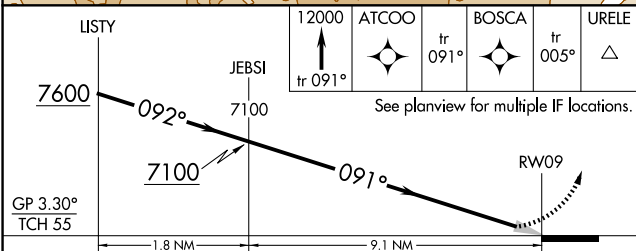
**▽**  
**☼** -17°C For uncompensated Baro-VNAV systems, procedure NA below -28°C or above 54°C.

MISSED APPROACH: Climb to 12000 on track 091° to ATCOO and on track 091° to BOSCA and on track 005° to URELE and hold.

ATIS <b>120.4</b>	HELENA APP CON * <b>119.5 229.4</b>	HELENA TOWER * <b>118.3 (CTAF) 0 257.8</b>	GND CON <b>121.9</b>	UNICOM <b>122.95</b>
----------------------	--	---	-------------------------	-------------------------



LISTY	JEBSI	ATCOO	BOSCA	URELE
7600	7100	tr 091°	tr 091°	tr 005°



CATEGORY	A	B	C	D
RNP 0.11 DA		4224-1	360 (400-1)	
RNP 0.17 DA		4296-1¼	432 (500-1¼)	
RNP 0.30 DA		4489-1¾	625 (700-1¾)	

**AUTHORIZATION REQUIRED**

ELEV 3877 **D** TDZE 3864

REIL Rwy 9, 17, and 35  
MIRL Rwy 5-23 and 17-35  
HIRL Rwy 9-27

NW-1, 23 JAN 2025 to 20 FEB 2025

NW-1, 23 JAN 2025 to 20 FEB 2025