

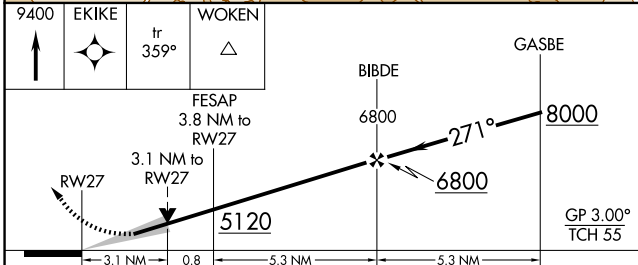
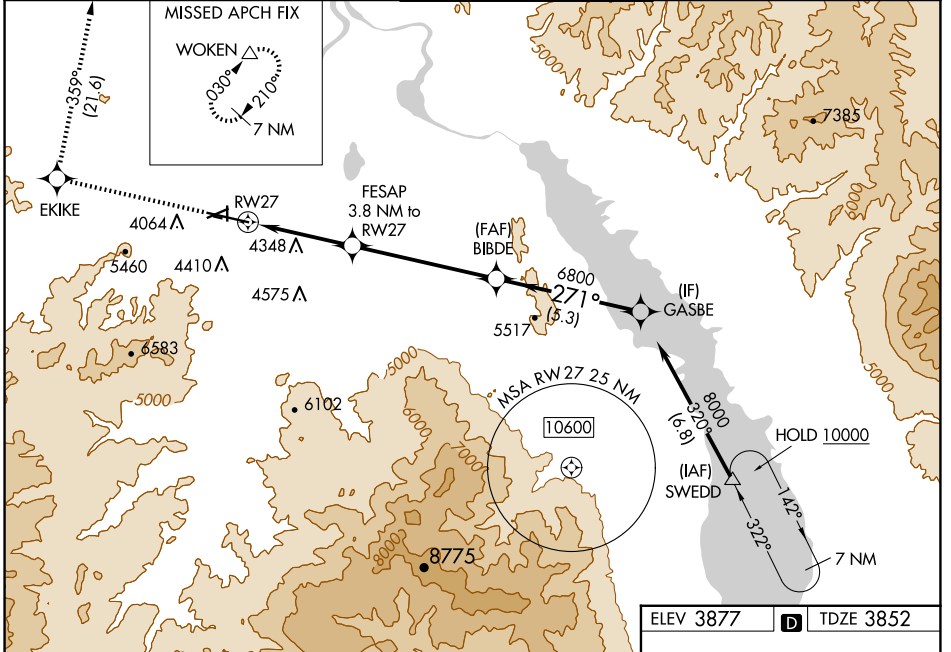
WAAS CH 69405 W27A	APP CRS 271°	Rwy Idg TDZE Apt Elev 9000 3852 3877
--	------------------------	--

RNAV (GPS) X RWY 27

HELENA RGNL (HLN)

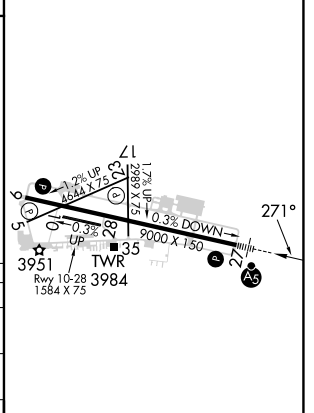
RNP APCH - GPS.	MALS R	MISSED APPROACH: Climb to 9400 direct EKIKE and on track 359° to WOKEN and hold.
<p>Circling NA to Rwsy 10 and 28. For uncompensated Baro-VNAV systems, LNAV/VNAV NA below -26°C or above 54°C. Circling Rwy 5, 23, 35 NA at night. For inop ALS, increase LPV all Cats visibility to 1/2 SM. Circling NA for Cat D south of Rwy 9-27.</p>		

ATIS 120.4	HELENA APP CON * 119.5 229.4	HELENA TOWER * 118.3 (CTAF) 257.8	GND CON 121.9	UNICOM 122.95
----------------------	--	---	-------------------------	-------------------------



ELEV 3877	D TDZE 3852
-----------	--------------------

CATEGORY	A	B	C	D
LPV DA		4501-1 $\frac{3}{8}$	649 (700-1 $\frac{3}{8}$)	
LNAV/VNAV DA		4724-2	872 (900-2)	
LNAV MDA	4880- $\frac{3}{4}$ 1028 (1100- $\frac{3}{4}$)	4880-1 1028 (1100-1)	4880-2 $\frac{1}{2}$	1028 (1100-2 $\frac{1}{2}$)
CIRCLING	4880-1 $\frac{1}{4}$ 1003 (1100-1 $\frac{1}{4}$)	4880-1 $\frac{1}{2}$ 1003 (1100-1 $\frac{1}{2}$)	6000-3	2123 (2200-3)



REIL Rwsy 9, 17, and 35
MIRL Rwsy 5-23 and 17-35
HIRL Rwy 9-27

NW-1, 23 JAN 2025 to 20 FEB 2025

NW-1, 23 JAN 2025 to 20 FEB 2025